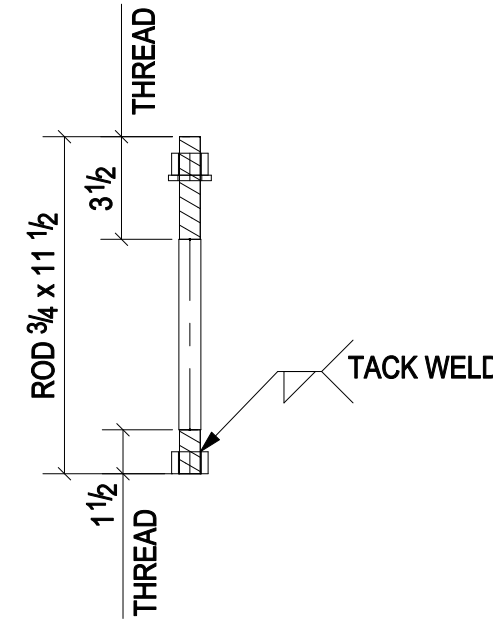
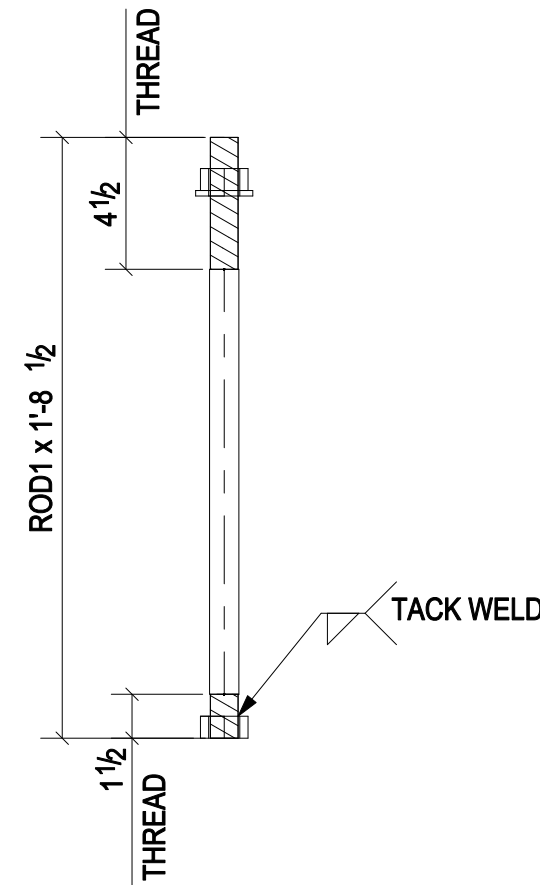


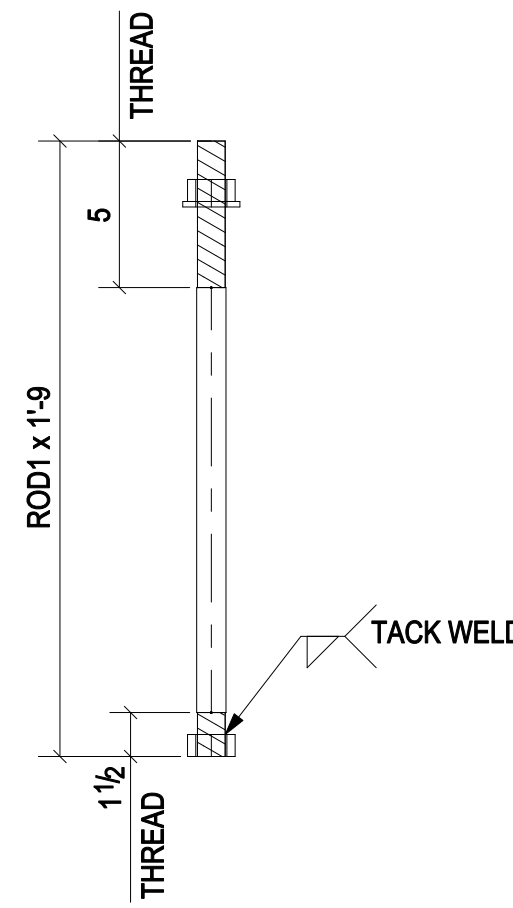
24 - ANCHOR BOLTS - 1AB1
(ASTM F1554)



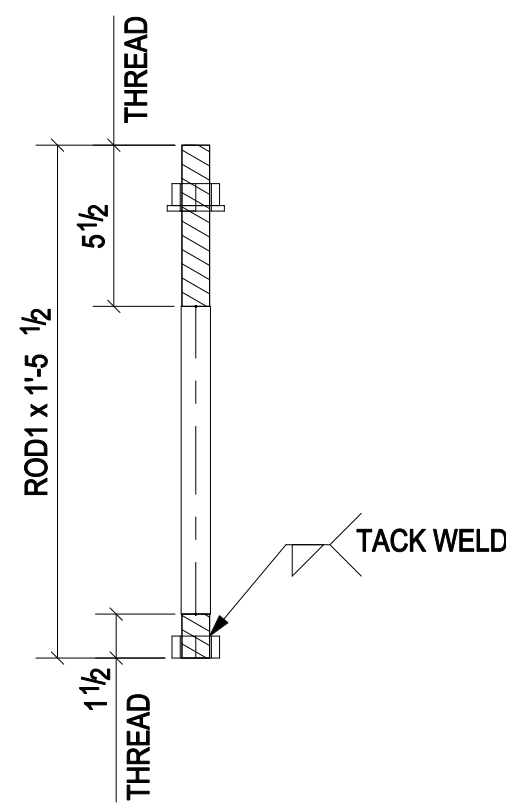
40 - ANCHOR BOLTS - 1AB2
(ASTM F1554)



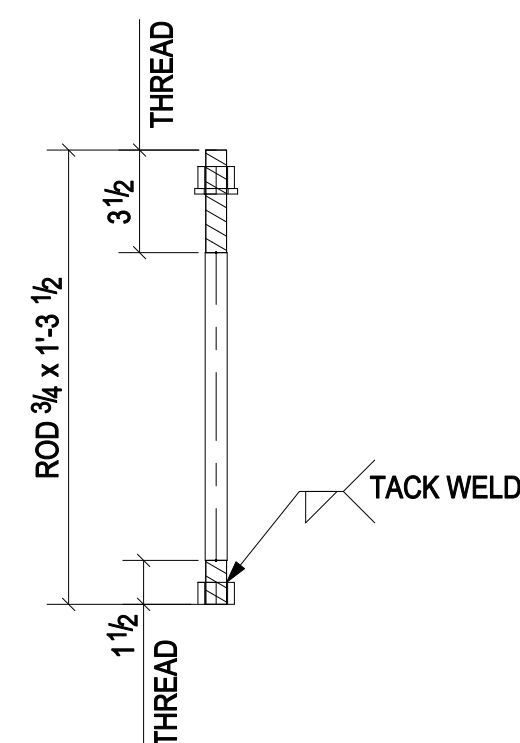
16 - ANCHOR BOLTS - 1AB3
(ASTM F1554)



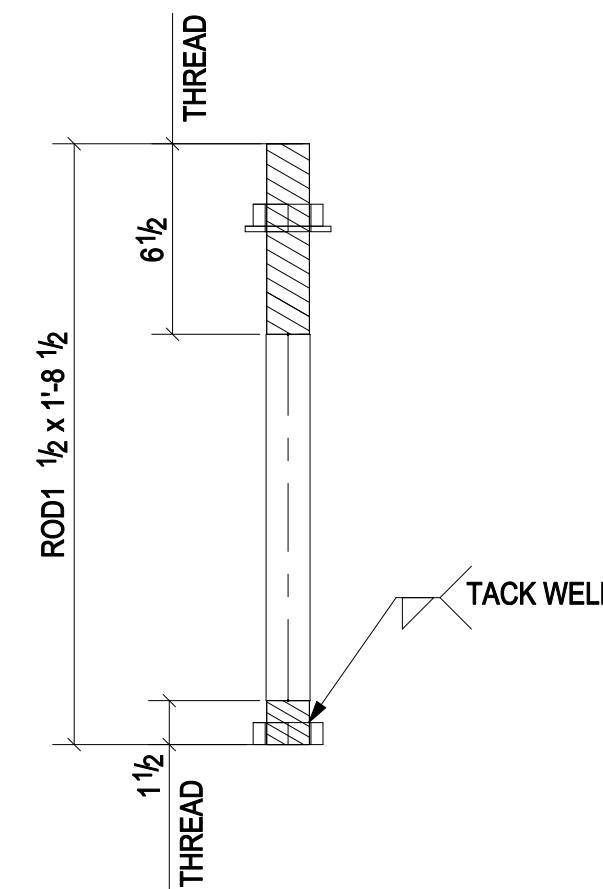
8 - ANCHOR BOLTS - 1AB4
(ASTM F1554)



24 - ANCHOR BOLTS - 1AB5
(ASTM F1554)



172 - ANCHOR BOLTS - 1AB6
(ASTM F1554)



96 - ANCHOR BOLTS - 1AB7
(ASTM F1554)

BILL OF MATERIAL

SHIP MARK	PIECE MARK	QTY	DESCRIPTION	LENGTH	REMARKS
1AB1		24	ROD3/4"	1'-0"	F1554-8
		48	3/4_HEAVY_HEX_NUT		
		24	3/4_WASHER		
1AB2		40	ROD3/4"	0'-11 1/2"	F1554-8
		80	3/4_HEAVY_HEX_NUT		
		40	3/4_WASHER		
1AB3		16	ROD1"	1'-8 1/2"	F1554-105
		32	1_HEAVY_HEX_NUT		
		16	1_WASHER		
1AB4		8	ROD1"	1'-9"	F1554-105
		16	1_HEAVY_HEX_NUT		
		8	1_WASHER		
1AB5		24	ROD1"	1'-5 1/2"	F1554-105
		48	1_HEAVY_HEX_NUT		
		24	1_WASHER		
1AB6		172	ROD3/4"	1'-3 1/2"	F1554-8
		344	3/4_HEAVY_HEX_NUT		
		172	3/4_WASHER		
1AB7		96	ROD1 1/2"	1'-8 1/2"	F1554-105
		192	1-1/2_HEAVY_HEX_NUT		
		96	1-1/2_WASHER		

PROJECT PHASING			
MARK	QTY	PHASE	
1AB1	24	Phase 5	
1AB2	40	Phase 5	
1AB3	16	Phase 5	
1AB4	8	Phase 5	
1AB5	24	Phase 5	
1AB6	172	Phase 5	
1AB7	96	Phase 5	

04/18/14							FOR FABRICATION	
PRINT RECORD							SHOP DRAWING DISCLAIMER	
DATE	APP.	SHOP	FIELD	DIST.	COORD.	F.C.	OFFICE	<small>ALL INFORMATION PROVIDED ON THESE DRAWINGS ARE PREPARED IN ACCORDANCE TO THE CONTRACT DOCUMENTS AND THE SPECIFICATIONS. ALL CLOTTED AREAS SHOWN ARE DUE TO LACK OF INFORMATION PROVIDED BY THE CONTRACT DOCUMENTS OR SPECIFICATIONS, BUT PREPARED WITH ALL THE INFORMATION AVAILABLE TO US. WE MUST HAVE THESE AREAS ANSWERED BY THE GENERAL CONTRACTOR, ARCHITECT, A ENGINEER, BEFORE WE CAN START FABRICATING ANY MATERIAL. PLEASE RESPOND WITH THIS INFORMATION BY MARKING UP OUR SHOP DRAWINGS.</small>
MATERIAL:		HOLE SIZE:		BOLT GRADE:		MINIMUM WELD:		ELECTRODE:
A36 UNO		13/16" Ø UNO		A325-N UNO		3/16"		E-70XX
ARCH:							JOB NAME & LOCATION:	
ENGR:								
CONTR:								
REF:							JOB: 14-105	
DRAWN BY: RN		04/18/14		CHECKED BY: RKB		04/18/14		SHEET: 1
SHEET TITLE: ANCHOR BOLT DETAIL								
MODIFIED DATE: 04/18/14							LAST PLOT DATE: 04/18/14 CAD FILE NAME: 1	

