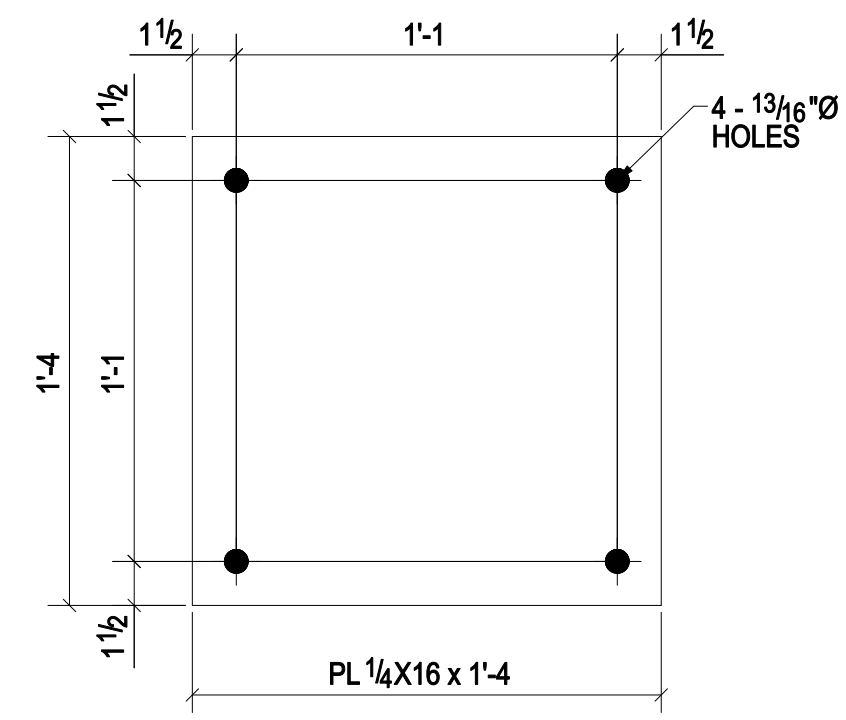
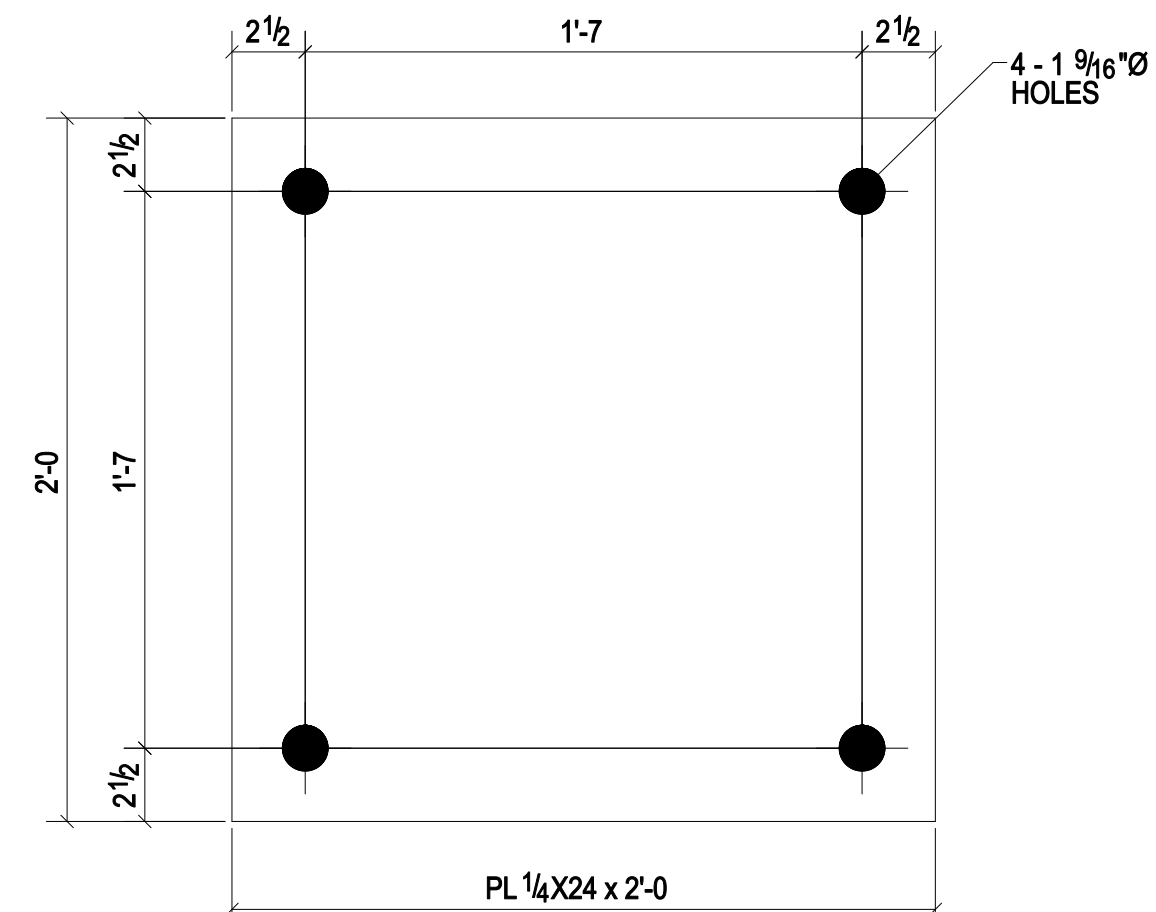


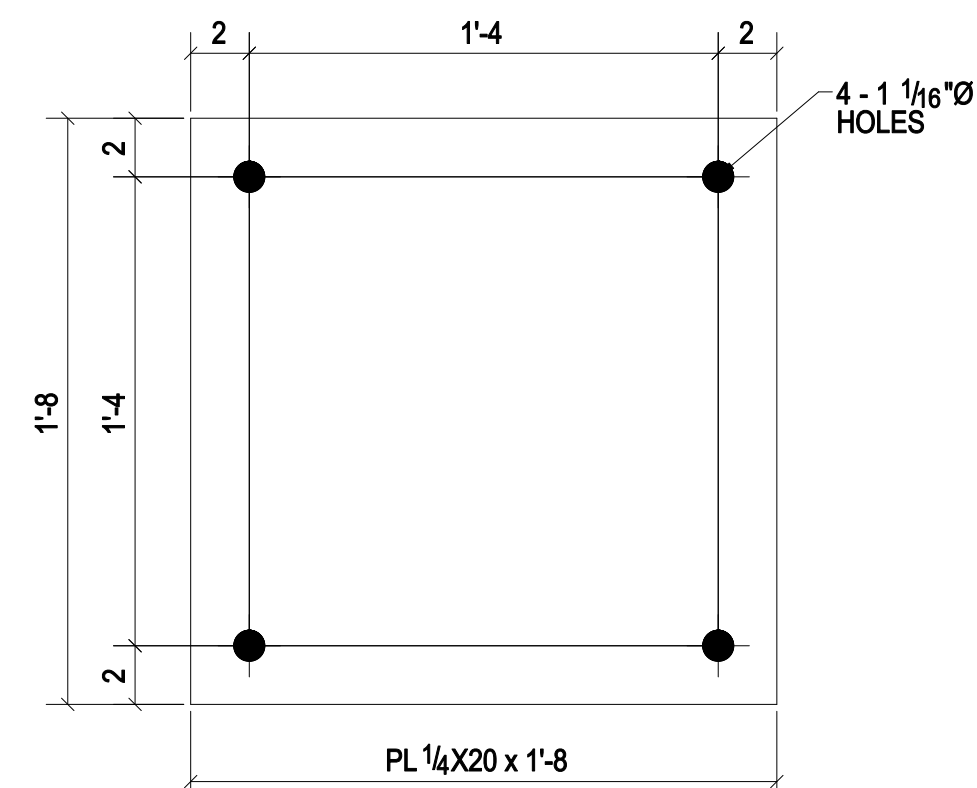
6 - LEVELING\_PLATES - 2LP1



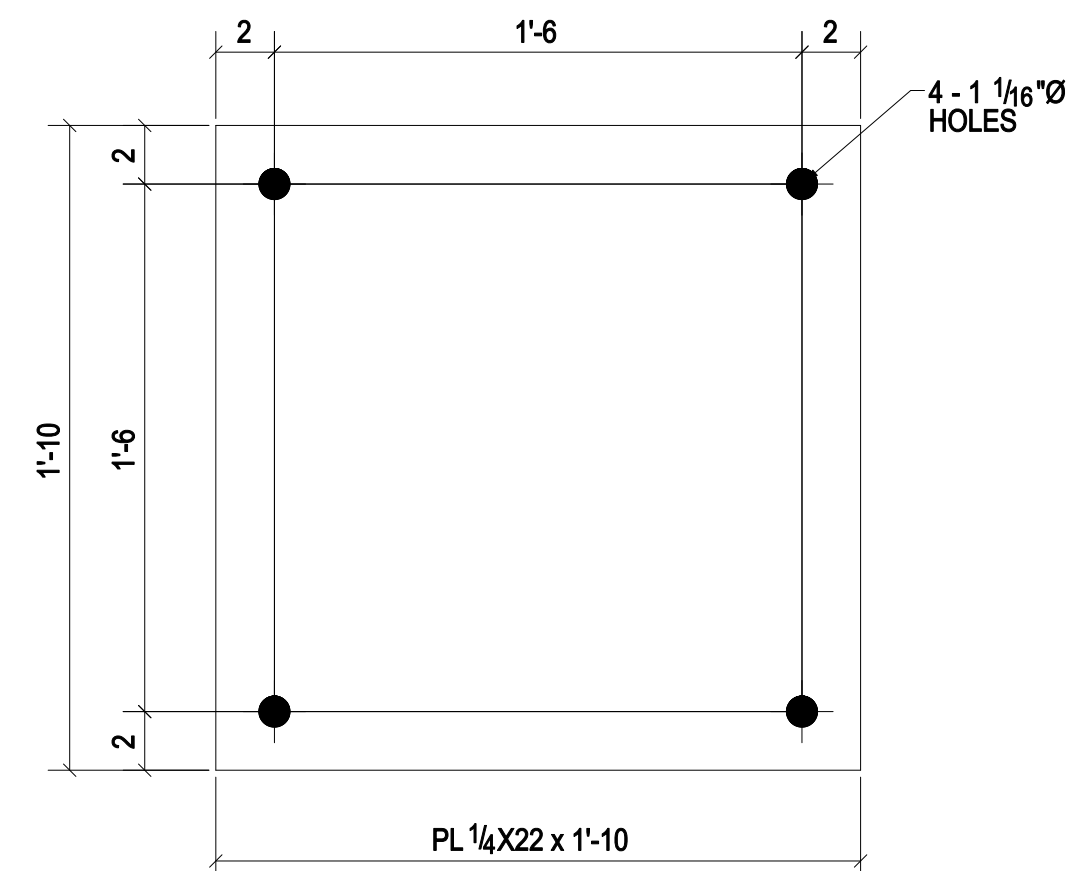
10 - LEVELING\_PLATES - 2LP2



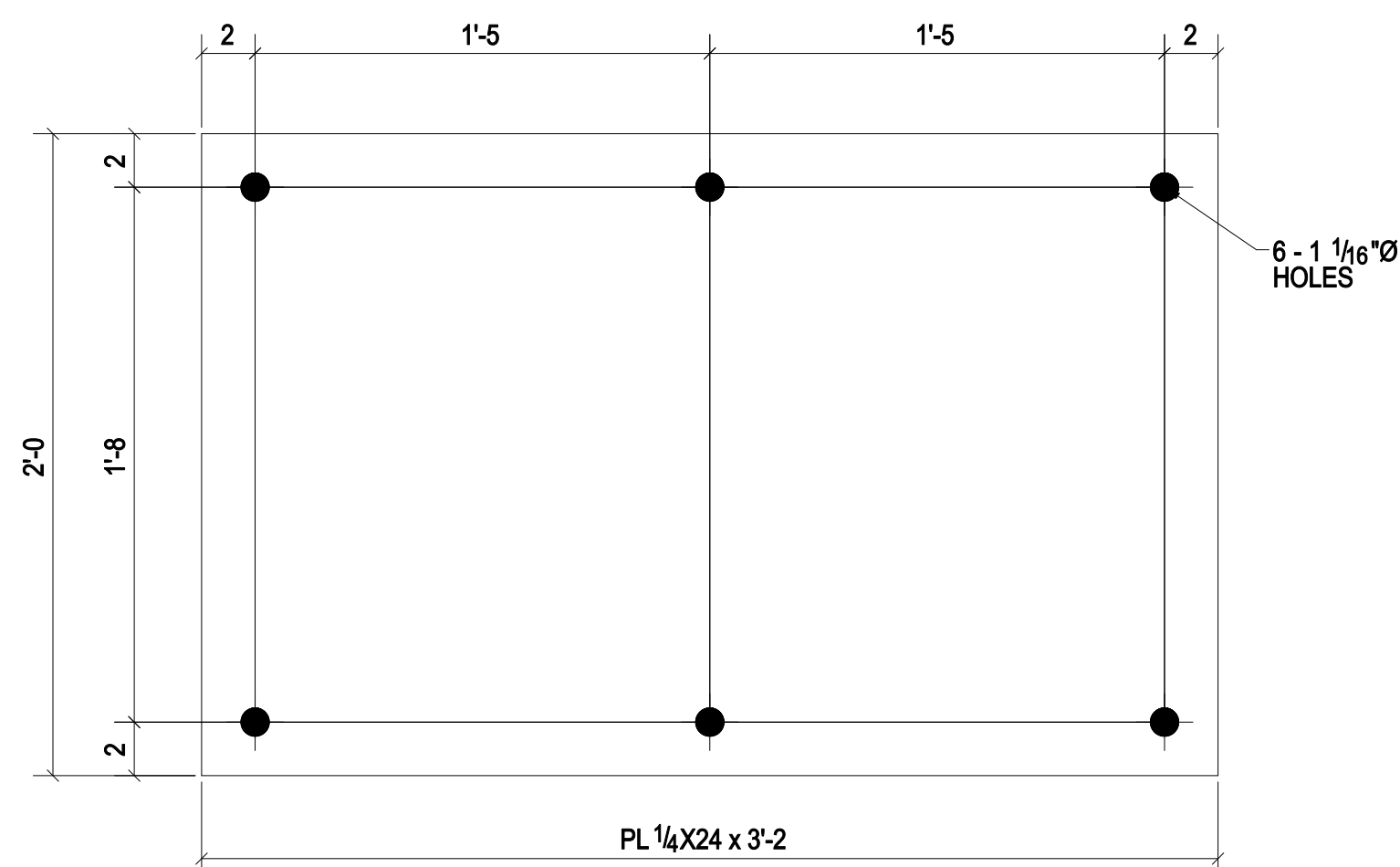
24 - LEVELING\_PLATES - 2LP7



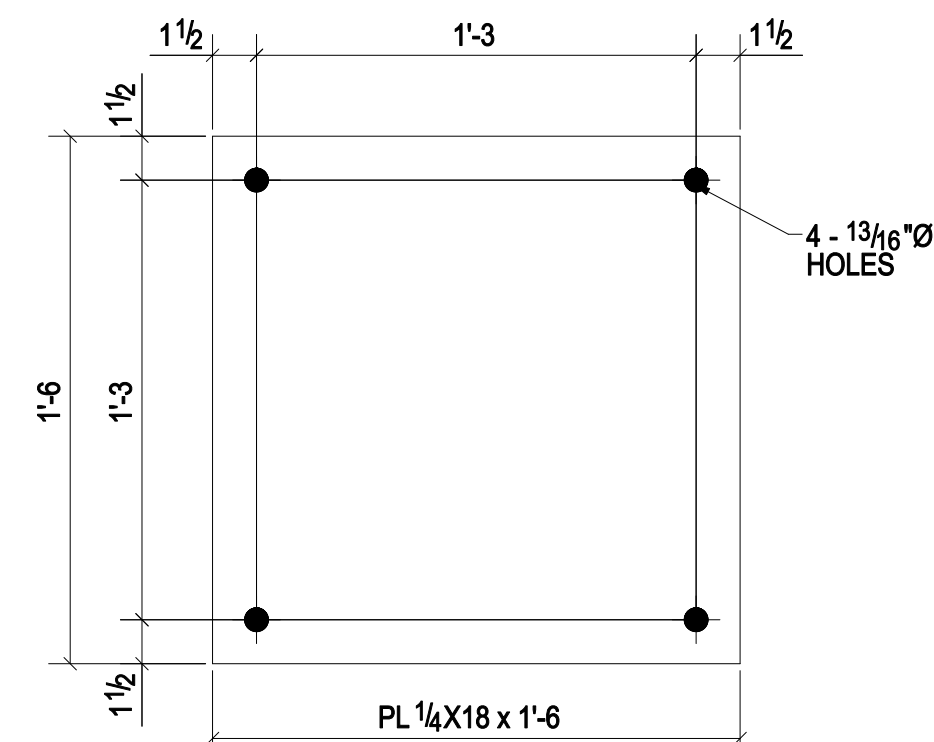
4 - LEVELING\_PLATES - 2LP3



2 - LEVELING\_PLATES - 2LP4



4 - LEVELING\_PLATES - 2LP5



43 - LEVELING\_PLATES - 2LP6

**BILL OF MATERIAL**

SHIP MARK	PIECE MARK	QTY	DESCRIPTION	LENGTH	REMARKS
2LP1		6	PL 1/4"X20"	1'-8"	A38
2LP2		10	PL 1/4"X16"	1'-4"	A38
2LP3		4	PL 1/4"X20"	1'-8"	A38
2LP4		2	PL 1/4"X22"	1'-10"	A38
2LP5		4	PL 1/4"X24"	3'-2"	A38
2LP6		43	PL 1/4"X18"	1'-6"	A38
2LP7		24	PL 1/4"X24"	2'-0"	A38

PROJECT PHASING			
MARK	QTY	PHASE	
2LP1	6	Phase 5	
2LP2	10	Phase 5	
2LP3	4	Phase 5	
2LP4	2	Phase 5	
2LP5	4	Phase 5	
2LP6	43	Phase 5	
2LP7	24	Phase 5	

04/18/14							FOR FABRICATION					
DATE							PRINT RECORD					
DATE	APP.	SHOP	FIELD	DIST.	COORD.	F.C.	OFFICE	<b>SHOP DRAWING DISCLAIMER</b> ALL INFORMATION PROVIDED ON THESE DRAWINGS ARE PREPARED IN ACCORDANCE TO THE CONTRACT DOCUMENTS AND THE SPECIFICATIONS. ALL CLOTTED AREAS SHOWN ARE DUE TO LACK OF INFORMATION PROVIDED BY THE CONTRACT DOCUMENTS OR SPECIFICATIONS, BUT PREPARED WITH ALL THE INFORMATION AVAILABLE TO US. WE MUST HAVE THESE AREAS ANSWERED BY THE GENERAL CONTRACTOR, ARCHITECT, A ENGINEER, BEFORE WE CAN START FABRICATING ANY MATERIAL. PLEASE RESPOND WITH THIS INFORMATION BY MARKING UP OUR SHOP DRAWINGS.				
MATERIAL:	HOLE SIZE:	BOLT GRADE:	MINIMUM WELD:	ELECTRODE:								
A36 UNO	13/16" Ø UNO	A325-N UNO	3/16"	E-70XX								
ARCH:							JOB NAME & LOCATION:					
ENGR:												
CONTR:												
REF:							JOB: 14-105					
DRAWN BY: RN 04/18/14							CHECKED BY: RKB 04/18/14					
SHEET TITLE: LEVELING_PLATE							SHEET: 2					
MODIFIED DATE: 04/18/14							LAST PLOT DATE: 04/18/14 CAD FILE NAME: 1					