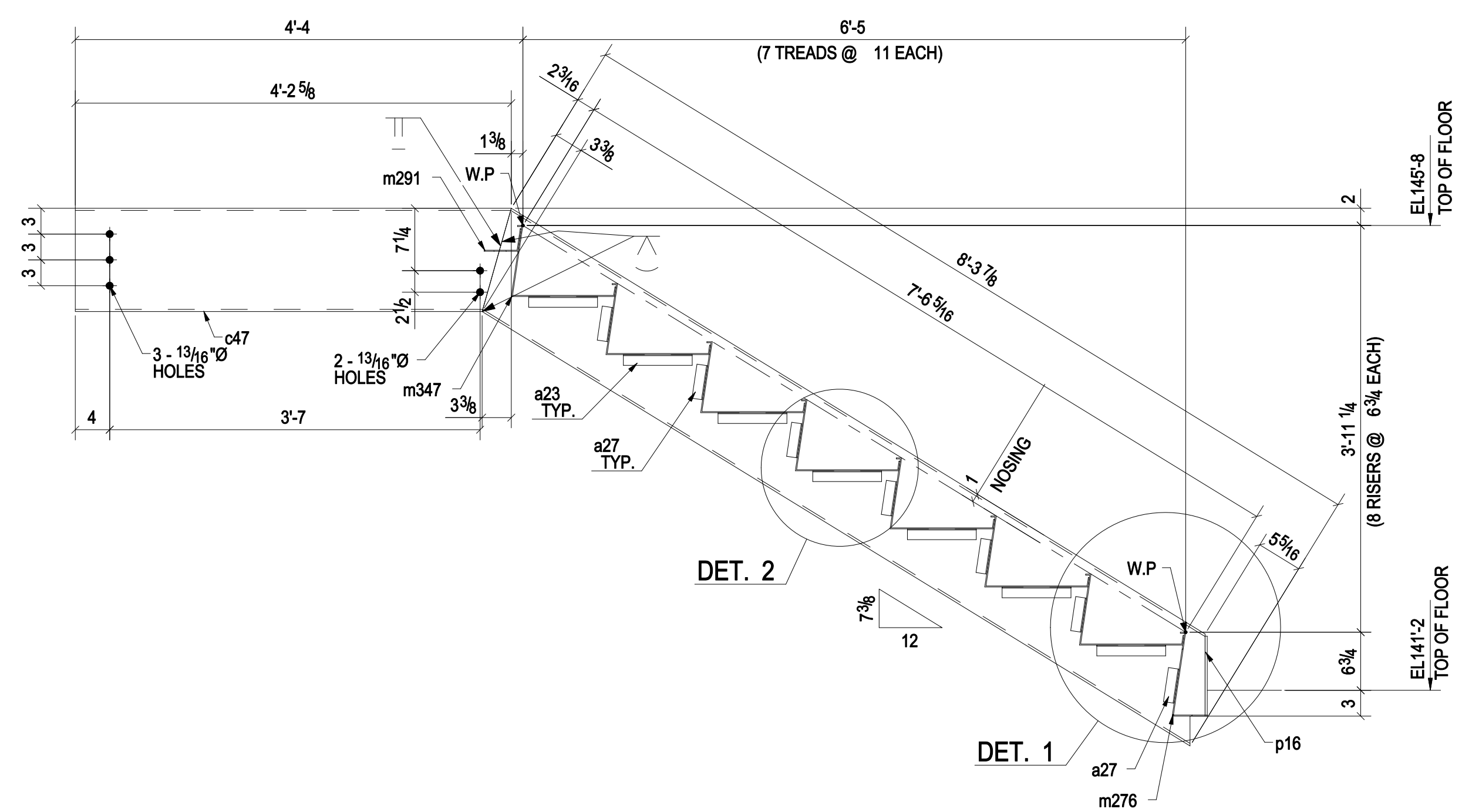
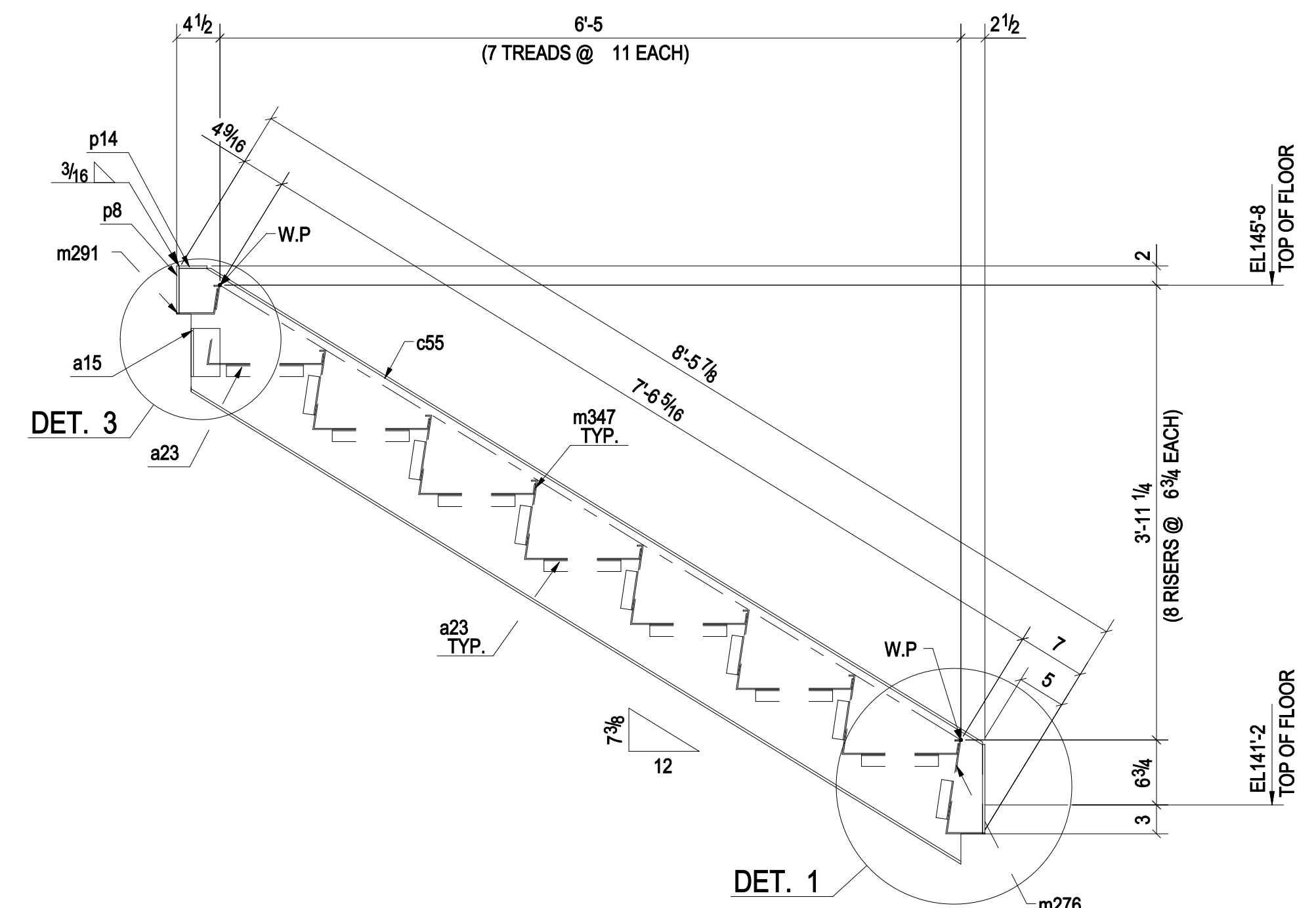


BILL OF MATERIAL

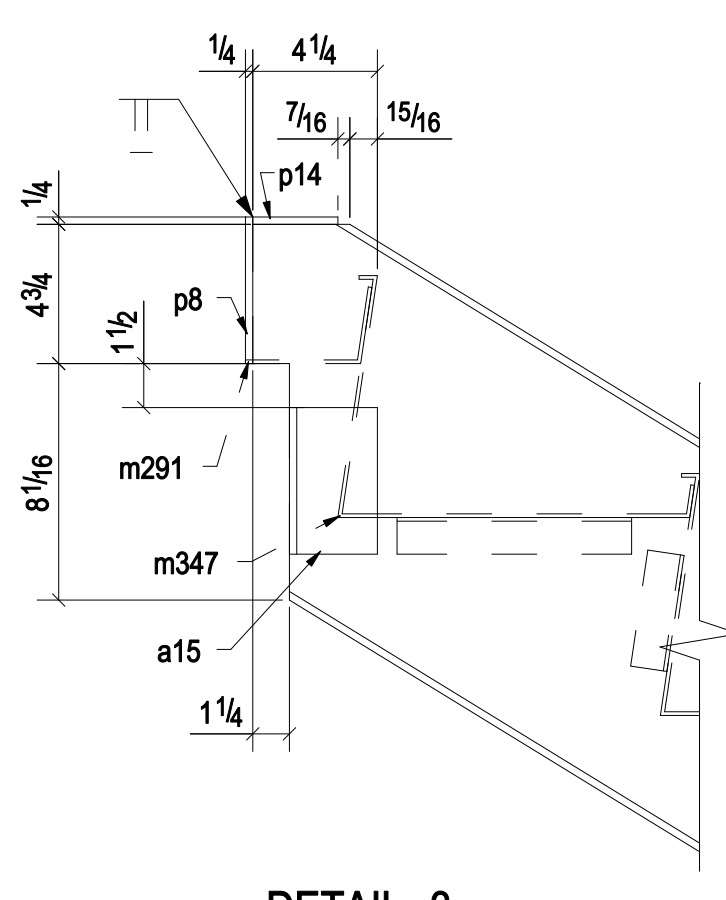
MARK	QTY	DESCRIPTION	LENGTH	WEIGHT	REMARKS
245ST1	1	STRINGER			BEV-2
245ST1	1	C12X20.7	8'-3 7/8"	172	A36
a15	1	L3X3X1/4	0'-0"	2	A36
a23	14	L1-1/4X1-1/4X1/8	0'-0"	9	A36
a27	14	L1-1/4X1-1/4X1/8	0'-4"	5	A36
c47	1	C12X20.7	4'-2 5/8"	87	A36
c55	1	C12X20.7	8'-5 7/8"	178	A36
m276	1	SHT12GAX8 5/16"	3'-10 1/2"	24	A36
m291	1	SHT12GAX8 5/16"	3'-10 1/2"	11	A36
m347	7	SHT12GAX21 5/16"	3'-10 1/2"	260	A36
p8	1	FL1/4"X3"	0'-0"	1	A36
p14	1	FL1/4"X2 7/8"	0'-0"	1	A36
p16	2	FL1/4"X3"	0'-0 5/16"	4	A36
TOTAL WEIGHT THIS DRAWING				742	



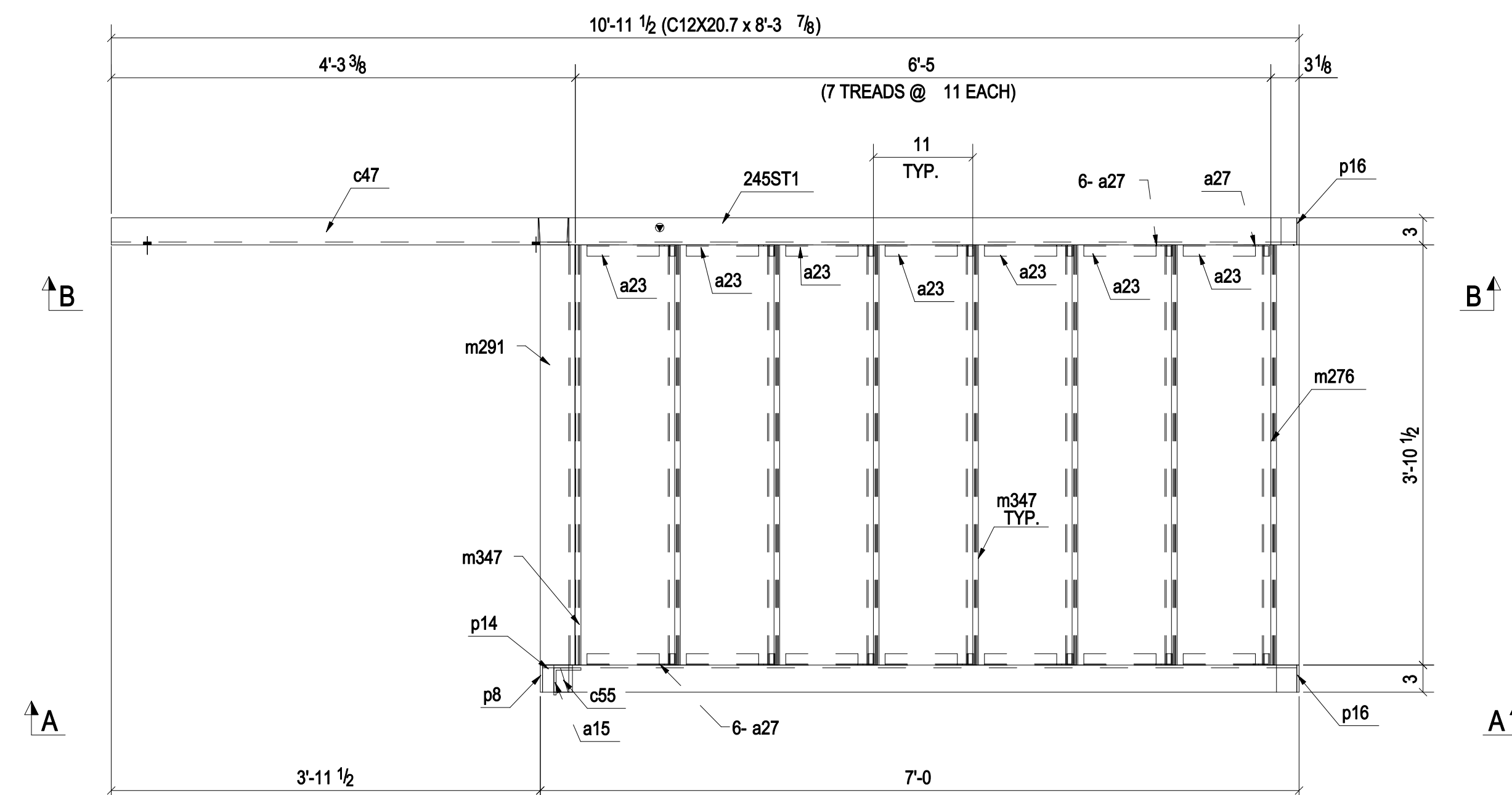
B - B



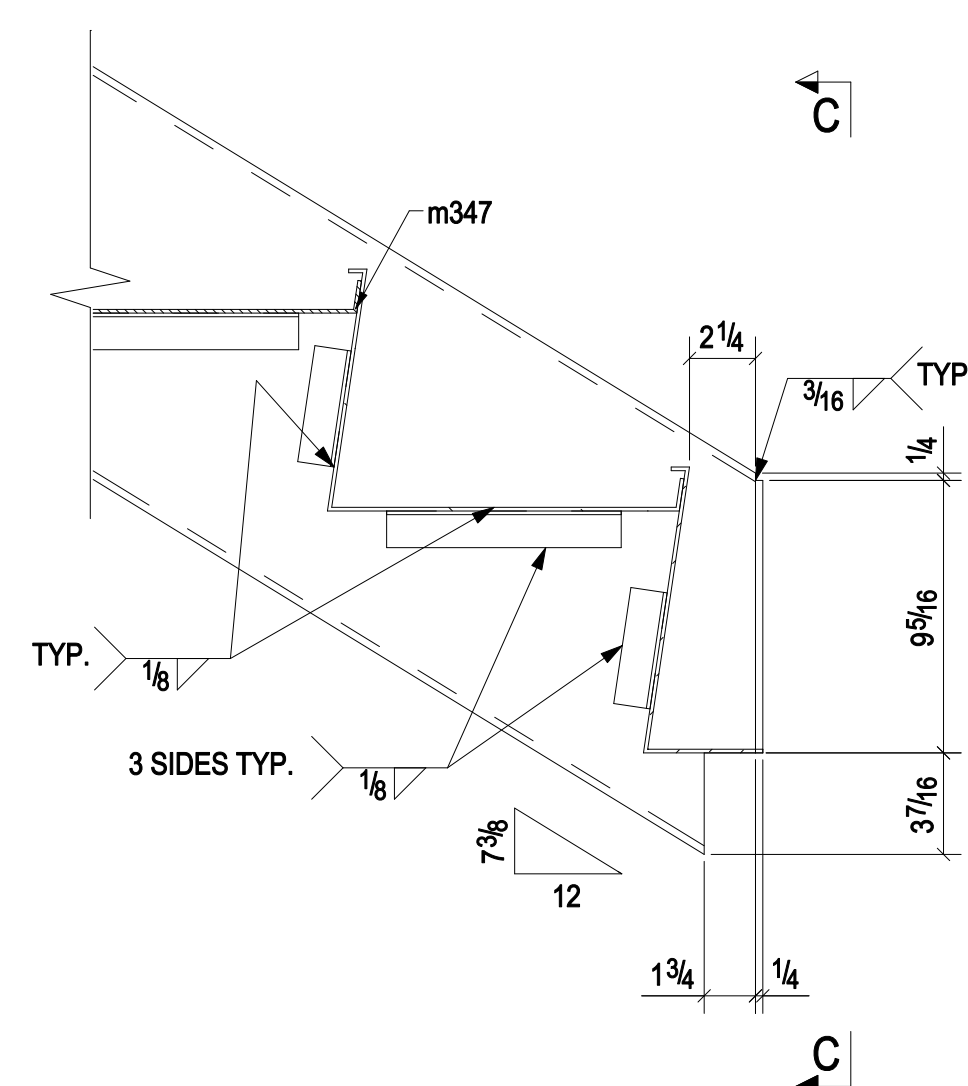
A - A



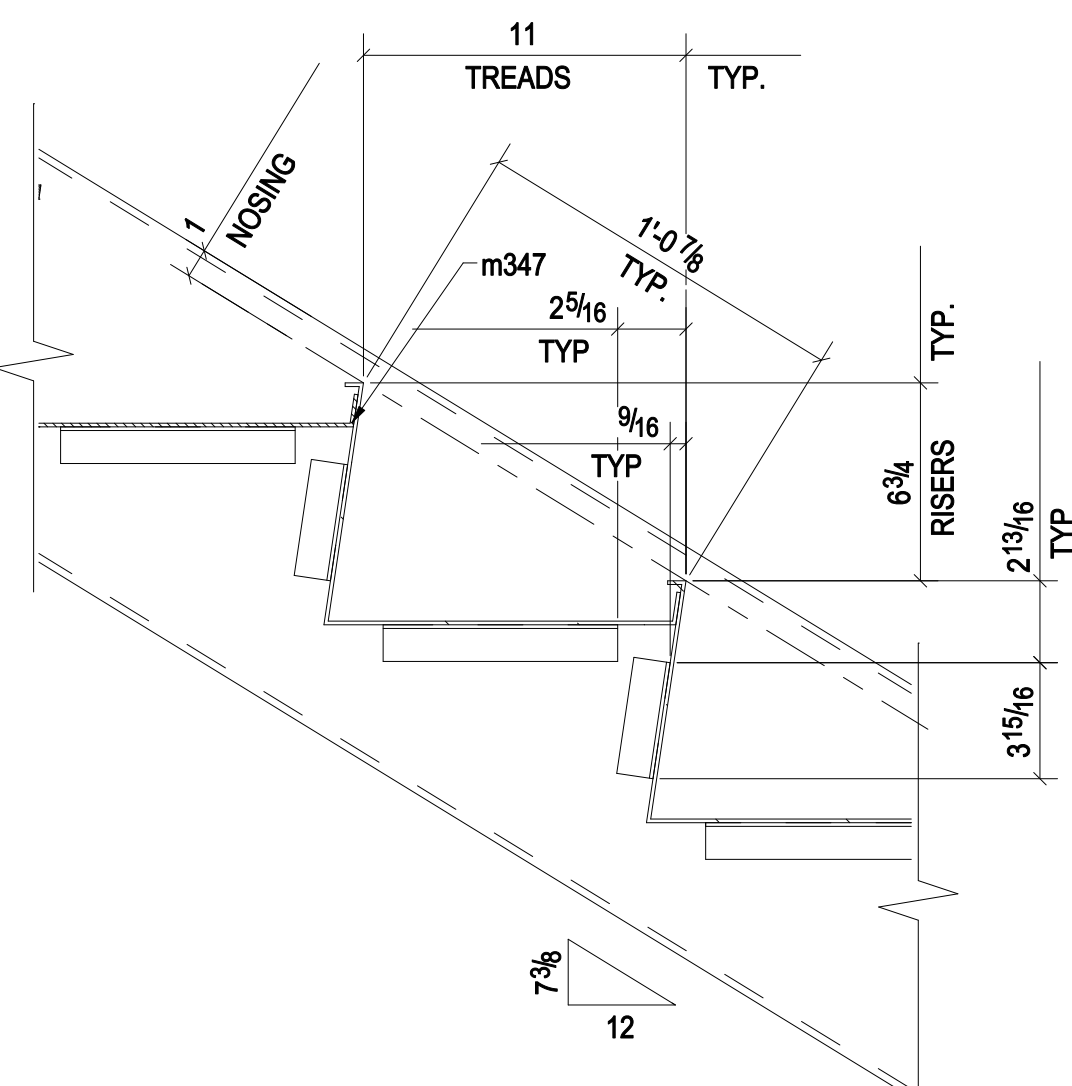
DETAIL 3



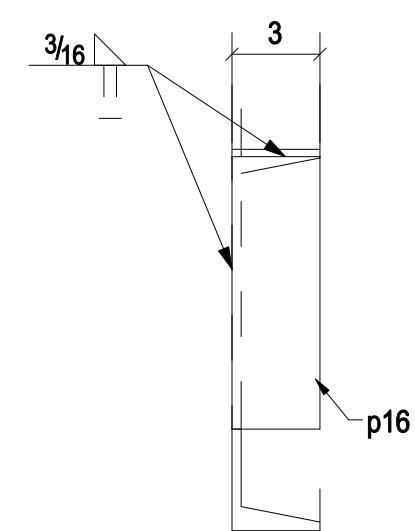
ONE - STRINGER - 245ST1



DETAIL 1



DETAIL 2



C - C

Total Qty	Unit Qty	Bolt Size & Length
3	3	BOLT 3/4" DIA A325 2" 0'-2"

JOB #600

SCALE: N/A	APPROVED BY:	DRAWN BY: PR
DATE: 04/06/2013		REVISED: FOR FABRICATION
		DRAWING NUMBER 245