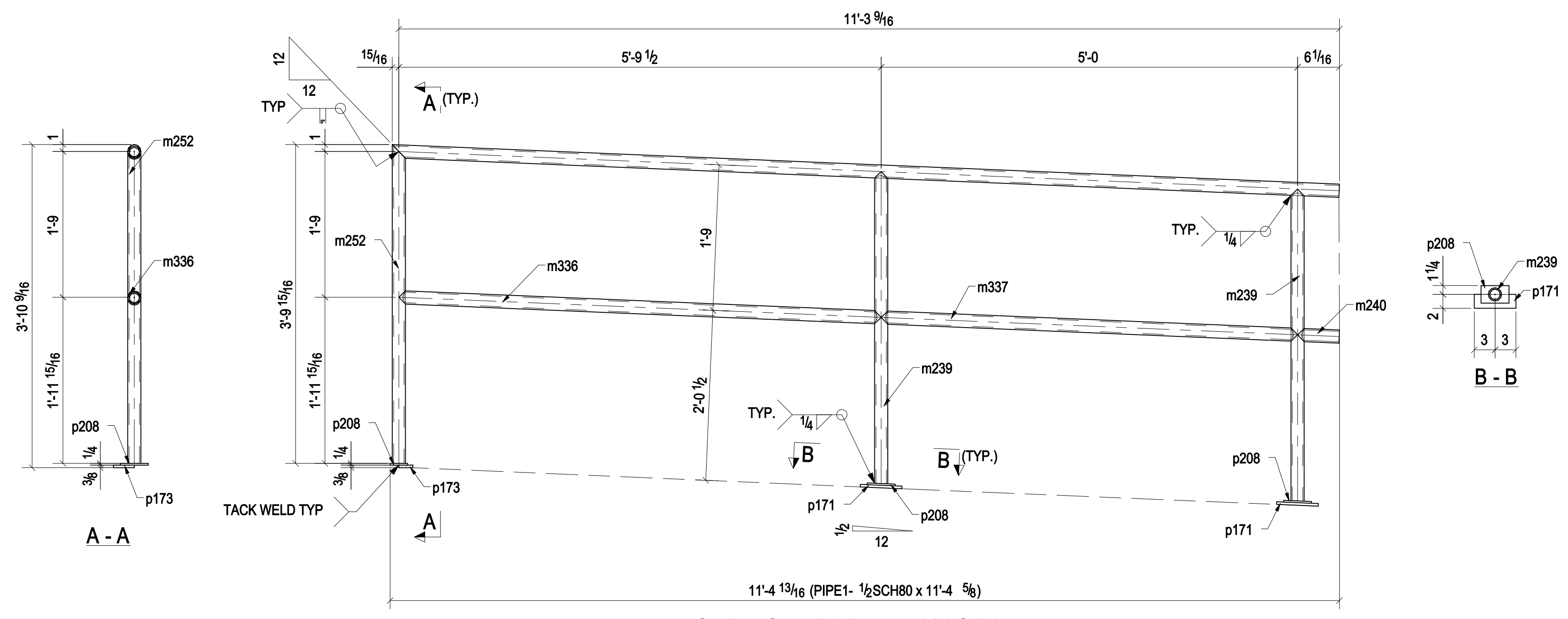


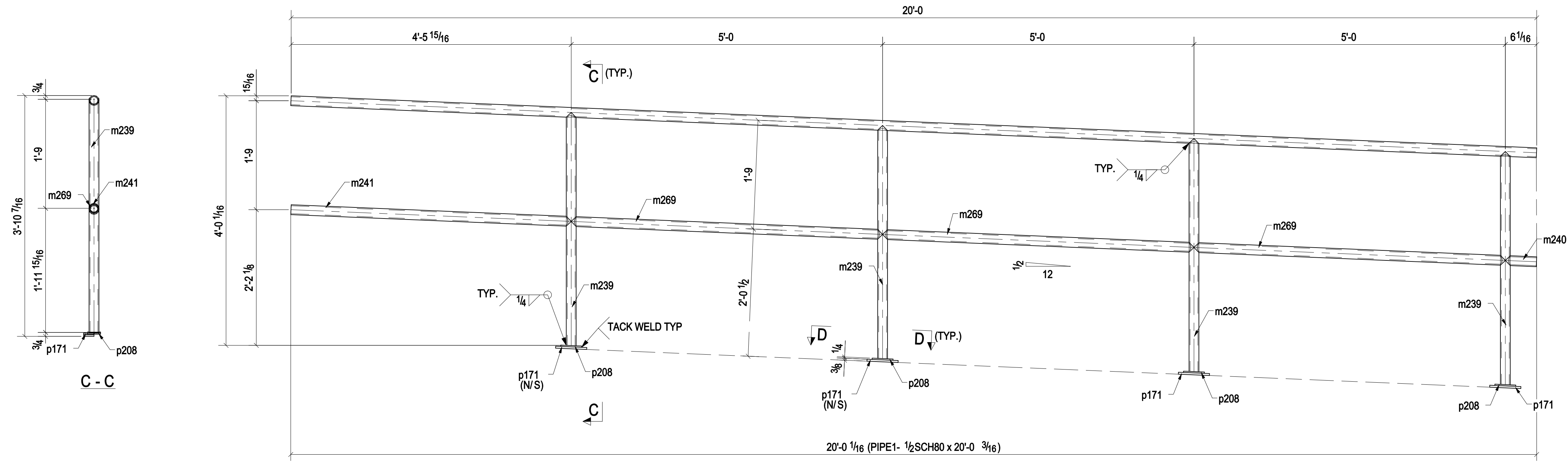
# BILL OF MATERIAL

MARK	QTY	DESCRIPTION	LENGTH	WEIGHT	REMARKS
169GR1	1	GUARDRAIL			
169GR1	1	PIPE1-1/2SCH80	11'-4 5/8"	39	A53
m239	2	PIPE1-1/2SCH80	3'-8 15/16"	26	A53
m240	1	PIPE1-1/2SCH80	0'-6"	2	A53
m252	1	PIPE1-1/2SCH80	3'-9 15/16"	13	A53
m336	1	PIPE1-1/2SCH80	5'-9 9/16"	20	A53
m337	1	PIPE1-1/2SCH80	5'-0 1/16"	17	A53
p171	2	FL3/8"X2"	0'-6"	3	A36
p173	1	FL3/8"X2"	0'-3"	1	A36
p208	3	PL1/4"X2 1/2"	0'-4"	2	A36
169GR2	1	GUARDRAIL			
169GR2	1	PIPE1-1/2SCH80	20'-0 3/16"	68	A53
m239	4	PIPE1-1/2SCH80	3'-8 15/16"	51	A53
m240	1	PIPE1-1/2SCH80	0'-6"	2	A53
m241	1	PIPE1-1/2SCH80	4'-6 1/16"	15	A53
m269	3	PIPE1-1/2SCH80	5'-0 1/16"	51	A53
p171	4	FL3/8"X2"	0'-6"	5	A36
p208	4	PL1/4"X2 1/2"	0'-4"	3	A36
TOTAL WEIGHT THIS DRAWING				316	



ONE - GUARDRAIL - 169GR1

GALV.  
1



ONE - GUARDRAIL - 169GR2

GALV.  
1

△		
△		
1	REVISED AS MARKED	
0	FOR FABRICATION	
NO.	REVISION	DATE
PROJECT NAME:		
LOCATION:		
CONTR: ---		
DRAWN BY:		
DATE:		
CHECKED BY:		
JOB NO. ---	GUARDRAIL	SHEET NO. 169