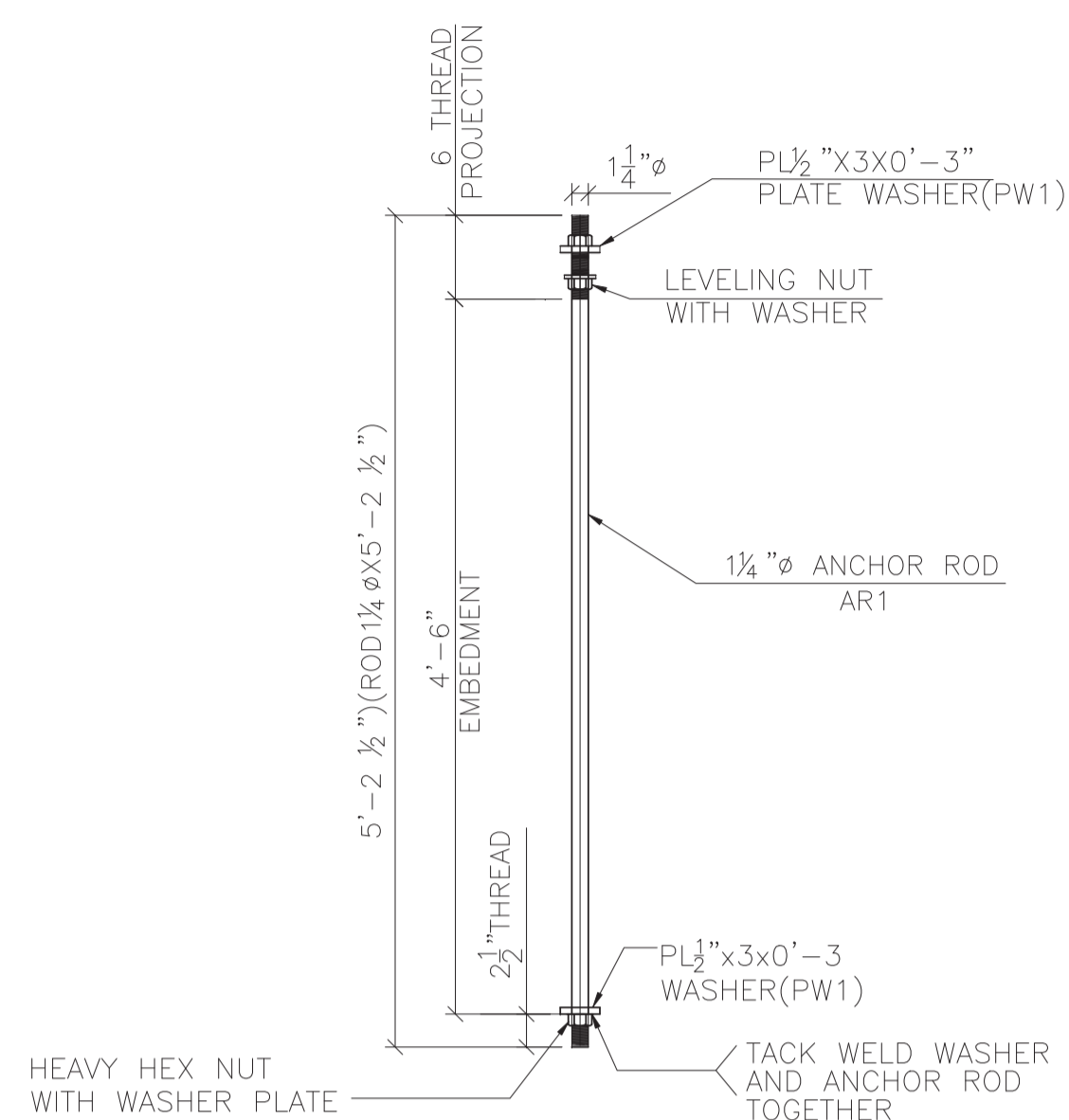
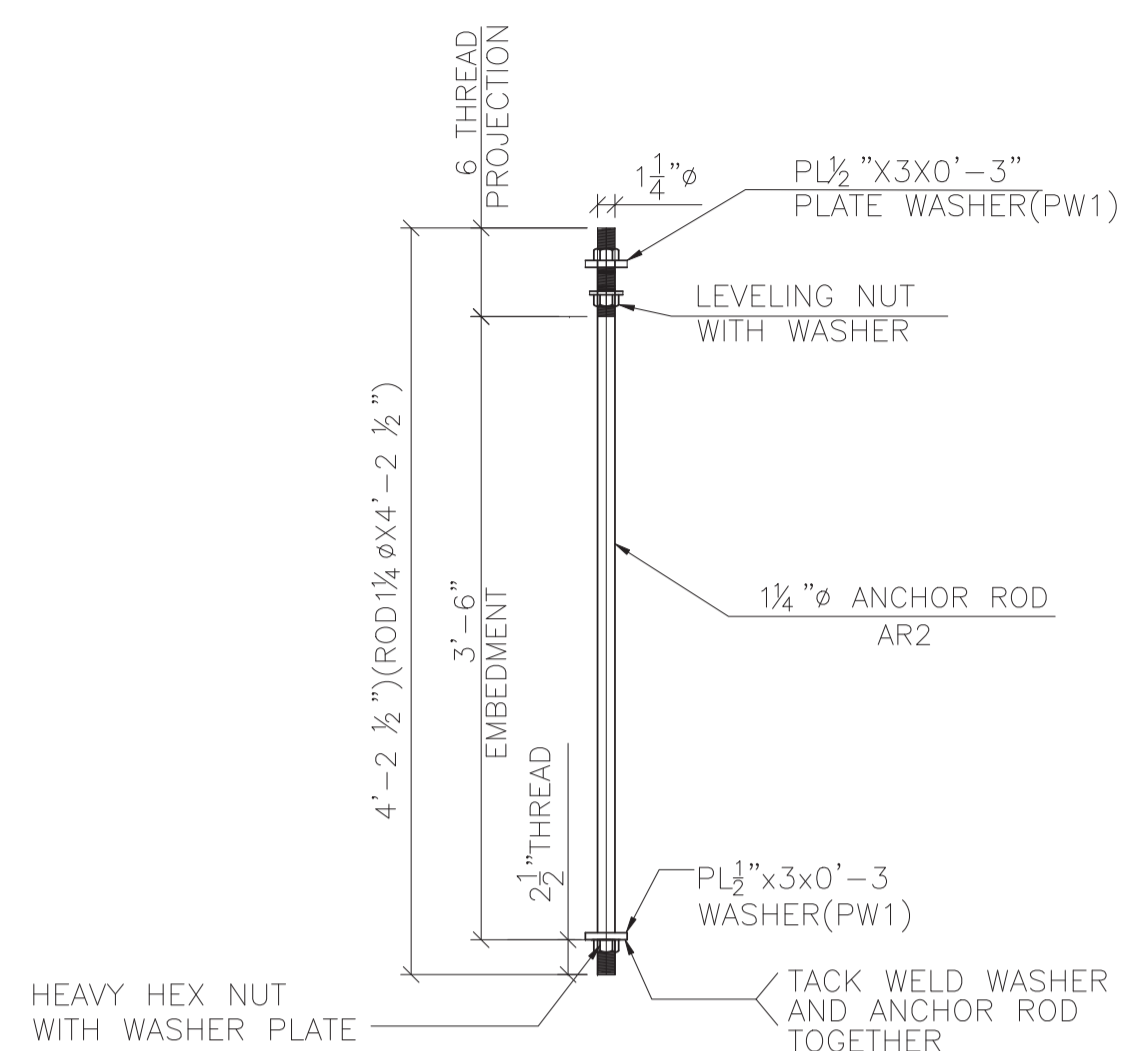


BILL OF MATERIAL

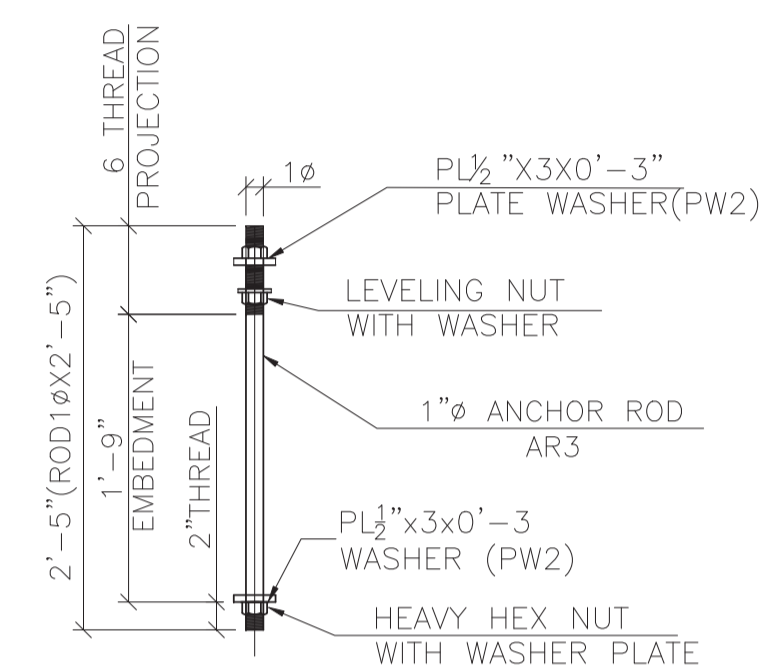
Seq. No.	Seq. Qty.	Piece Mark	Minor Mark	Quantity	Description	Length	Remarks	Steel Grade	Weight
		AR1		16	1 1/4" ANCHOR ROD	5	W/3 NUT & ONE WASHER		
		AR2		8	1 1/4" ANCHOR ROD	4	W/3 NUT & ONE WASHER		
		AR3		4	1" ANCHOR ROD	2	W/3 NUT & ONE WASHER		
		PW1		48	PL 1/2" X 3"	0	(PLATE WASHER)	A36	
		PW2		8	PL 1/2" X 3"	0	(PLATE WASHER)	A36	



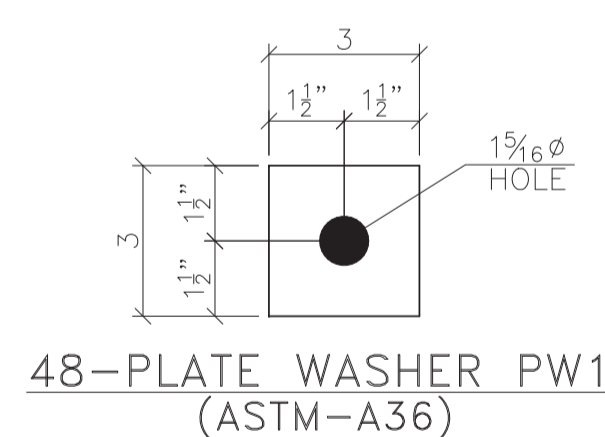
16-ANCHOR RODS-AR1  
(ASTM F1554 GR. 36)



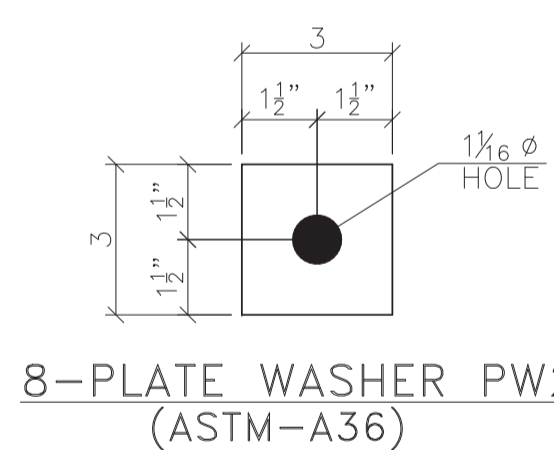
8-ANCHOR RODS-AR2  
(ASTM F1554 GR. 36)



4-ANCHOR RODS-AR3  
(ASTM F1554 GR. 36)



48-PLATE WASHER PW1  
(ASTM-A36)



8-PLATE WASHER PW2  
(ASTM-A36)

ALL ANCHOR RODS SHALL BE HOT-DIP GALVANIZED

△		
△		
△		
△	FOR FABRICATION	
NO.	REVISION	DATE
PROJECT NAME:		
LOCATION:		
CONTR: ---		
DRAWN BY:		
DATE:		
CHECKED BY:		
JOB NO.	ANCHOR BOLT	SHEET NO. AB3