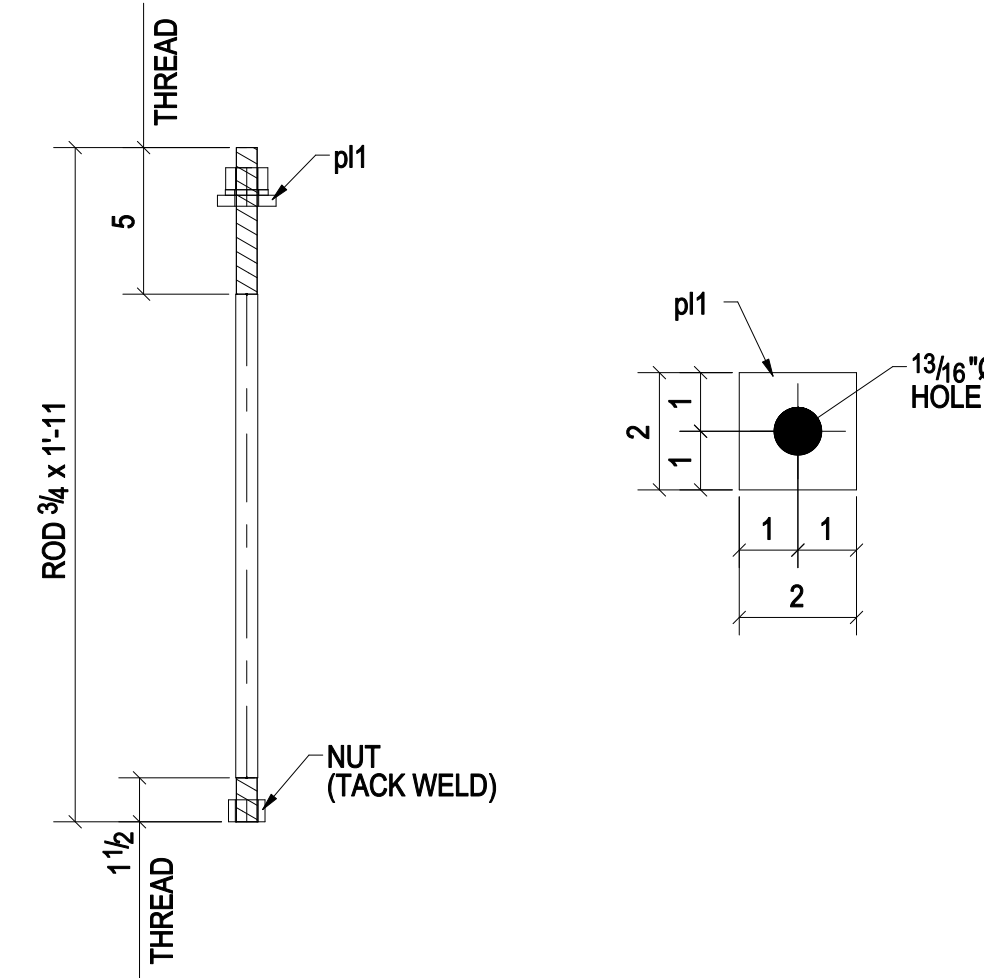
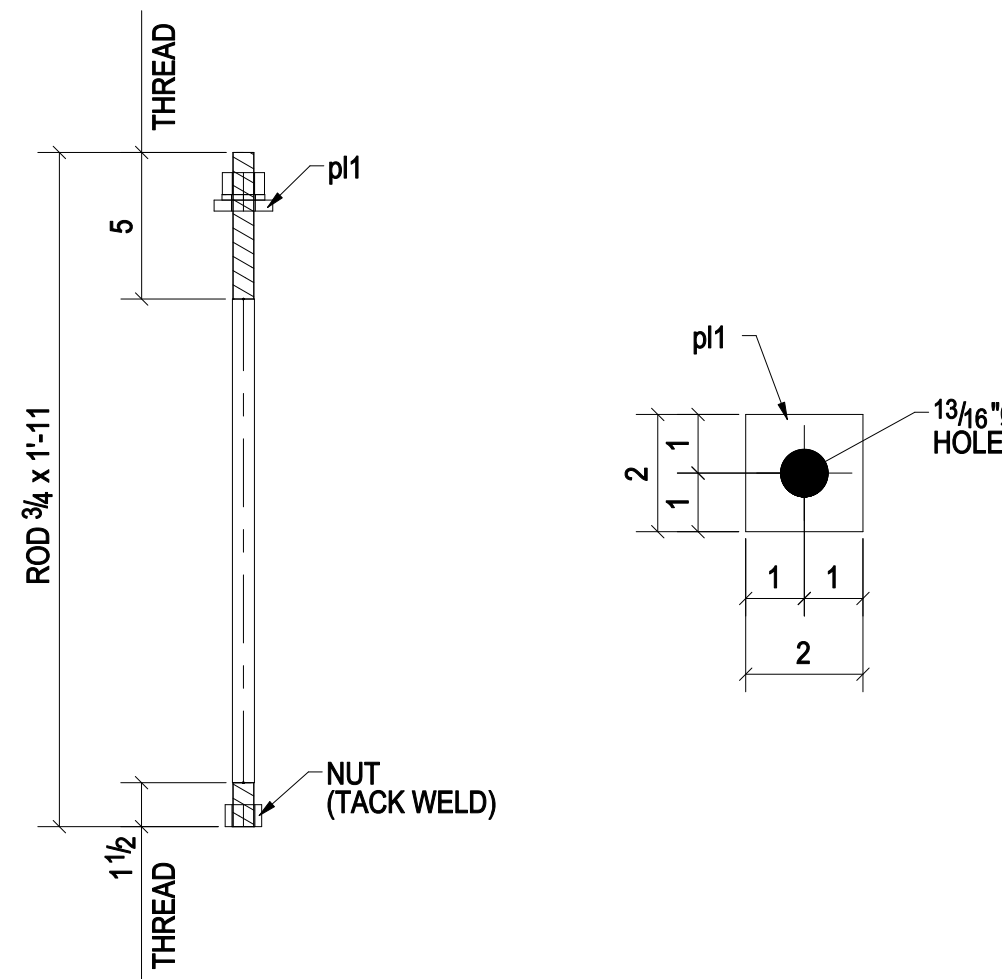


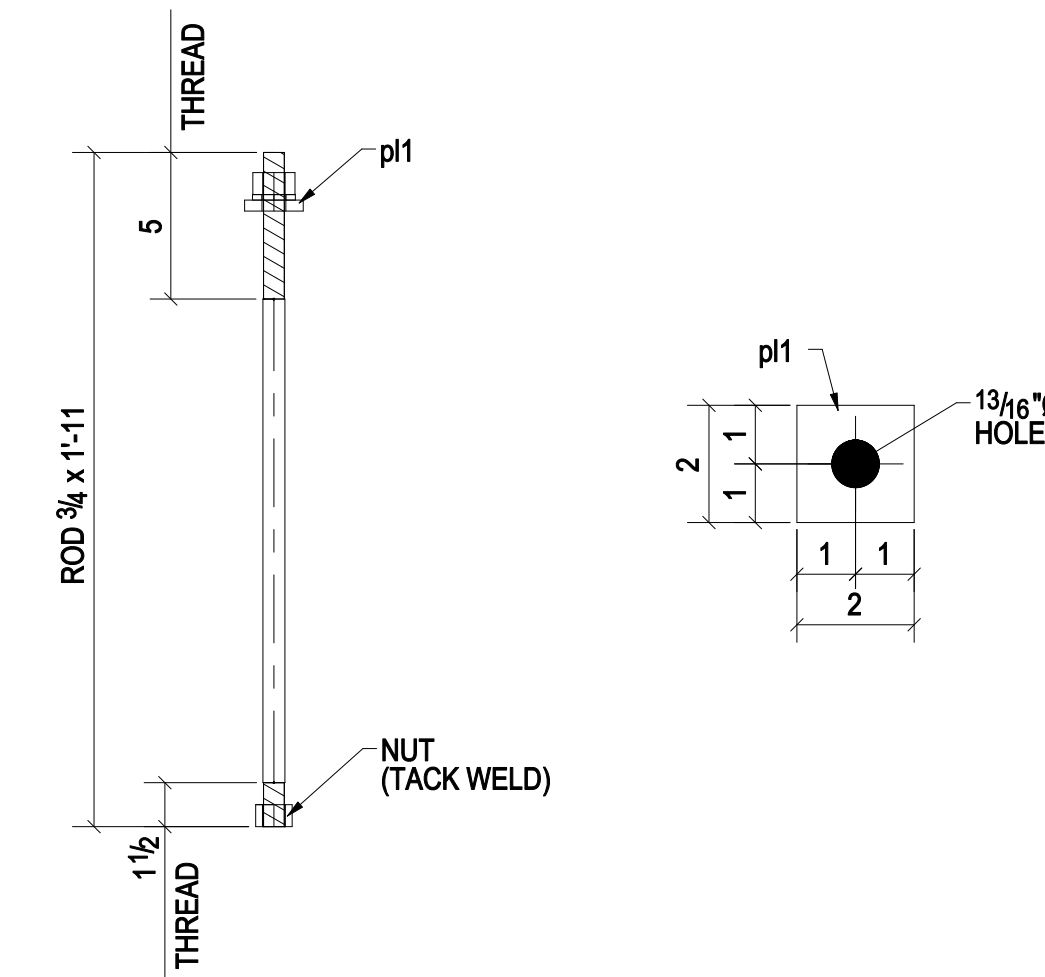
76 - ANCHOR BOLTS - 1AB1
(NO PAINT)



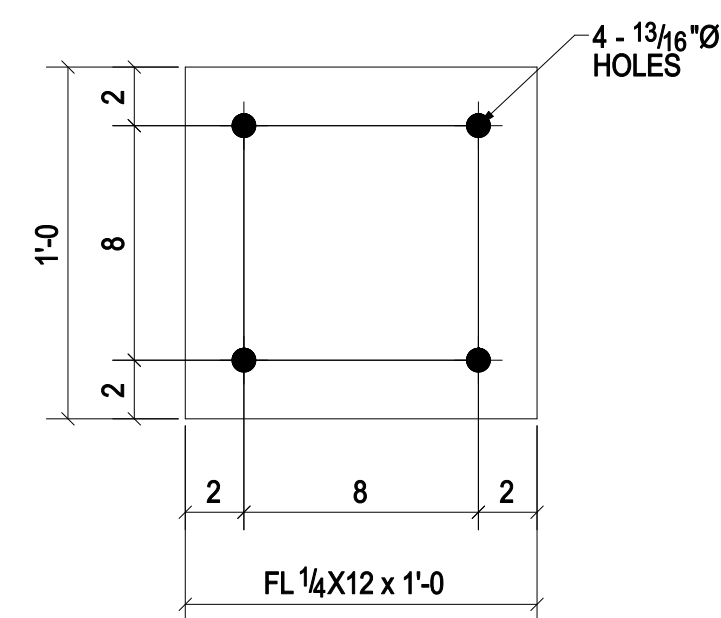
40 - ANCHOR BOLTS - 1AB2
(NO PAINT)



4 - ANCHOR BOLTS - 1AB3
(NO PAINT)



16 - ANCHOR BOLTS - 1AB4
(NO PAINT)



29 - LEVELING PLATES - 1LP1
(NO PAINT)

BILL OF MATERIAL

MARK	QTY	DESCRIPTION	LENGTH	WEIGHT	REMARKS
1AB1	76	ANCHOR BOLTS			
1AB1	76	ROD3/4"	1'-3"	123	F1554-36
pl1	76	FL3/8"x2"	0'-2"	32	A36
152		3/4" HEAVY HEX NUT		43	
76		3/4" WASHER		5	
1AB2	40	ANCHOR BOLTS			
1AB2	40	ROD3/4"	1'-11"	101	F1554-36
pl1	40	FL3/8"x2"	0'-2"	17	A36
120		3/4" HEAVY HEX NUT		22	
40		3/4" WASHER		3	
1AB3	4	ANCHOR BOLTS			
1AB3	4	ROD3/4"	1'-11"	10	F1554-36
pl1	4	FL3/8"x2"	0'-2"	2	A36
8		3/4" HEAVY HEX NUT		1	
4		3/4" WASHER		0	
1AB4	16	ANCHOR BOLTS			
1AB4	16	ROD3/4"	1'-11"	40	F1554-36
pl1	16	FL3/8"x2"	0'-2"	7	A36
32		3/4" HEAVY HEX NUT		6	
16		3/4" WASHER		1	
1LP1	29	LEVELING PLATES			
1LP1	29	FL1/4"x12"	1'-0"	296	A36
TOTAL WEIGHT THIS DRAWING				628	

PROJECT PHASING

MARK	QTY	PHASE
1AB1	76	Phase 5
1AB2	40	Phase 5
1AB3	4	Phase 5
1AB4	16	Phase 5
1LP1	29	Phase 5

<p>FOR APPROVAL</p> <p>DATE: 05/26/14</p>																						
<p>PRINT RECORD</p> <table border="1"> <thead> <tr> <th>DATE</th> <th>APP.</th> <th>SHOP</th> <th>FIELD</th> <th>DIST.</th> <th>COORD.</th> <th>F.C.</th> <th>OFFICE</th> </tr> </thead> <tbody> <tr> <td> </td> <td> </td> <td> </td> <td> </td> <td> </td> <td> </td> <td> </td> <td> </td> </tr> </tbody> </table>							DATE	APP.	SHOP	FIELD	DIST.	COORD.	F.C.	OFFICE								
DATE	APP.	SHOP	FIELD	DIST.	COORD.	F.C.	OFFICE															
<p>SHOP DRAWING DISCLAIMER</p> <p>ALL INFORMATION PROVIDED ON THESE DRAWINGS ARE PREPARED IN ACCORDANCE TO THE CONTRACT DOCUMENTS AND THE SPECIFICATIONS. ALL CLOSED AREAS SHOW ARE DUE TO LACK OF INFORMATION PROVIDED BY THE CONTRACT DOCUMENTS OR SPECIFICATIONS, BUT PREPARED WITH ALL THE INFORMATION AVAILABLE TO US. WE MUST HAVE THESE AREAS ANSWERED BY THE GENERAL CONTRACTOR, ARCHITECT, ENGINEER, BEFORE WE CAN START FABRICATING ANY MATERIAL. PLEASE RESPOND WITH THIS INFORMATION BY MARKING UP OUR SHOP DRAWINGS.</p>																						
MATERIAL:	HOLE SIZE:	BOLT GRADE:	MINIMUM WELD:	ELECTRODE:																		
A36 UNO	13/16" Ø UNO	A325-N UNO	3/16"	E-70XX																		
<p>ARCH: _____</p> <p>ENGR: _____</p> <p>CONTR: _____</p>				<p>JOB NAME & LOCATION: _____</p>																		
<p>REF: _____</p> <p>DRAWN BY: PC 05/26/14</p> <p>CHECKED BY: SK 05/26/14</p>				<p>JOB: 14-111</p> <p>SHEET: 1</p>																		
<p>ANCHOR BOLT & LEVELING PLATE DETAIL</p> <p>MODIFIED DATE: 05/28/14 LAST PLOT DATE: 05/28/14 CAD FILENAME: 1</p>																						