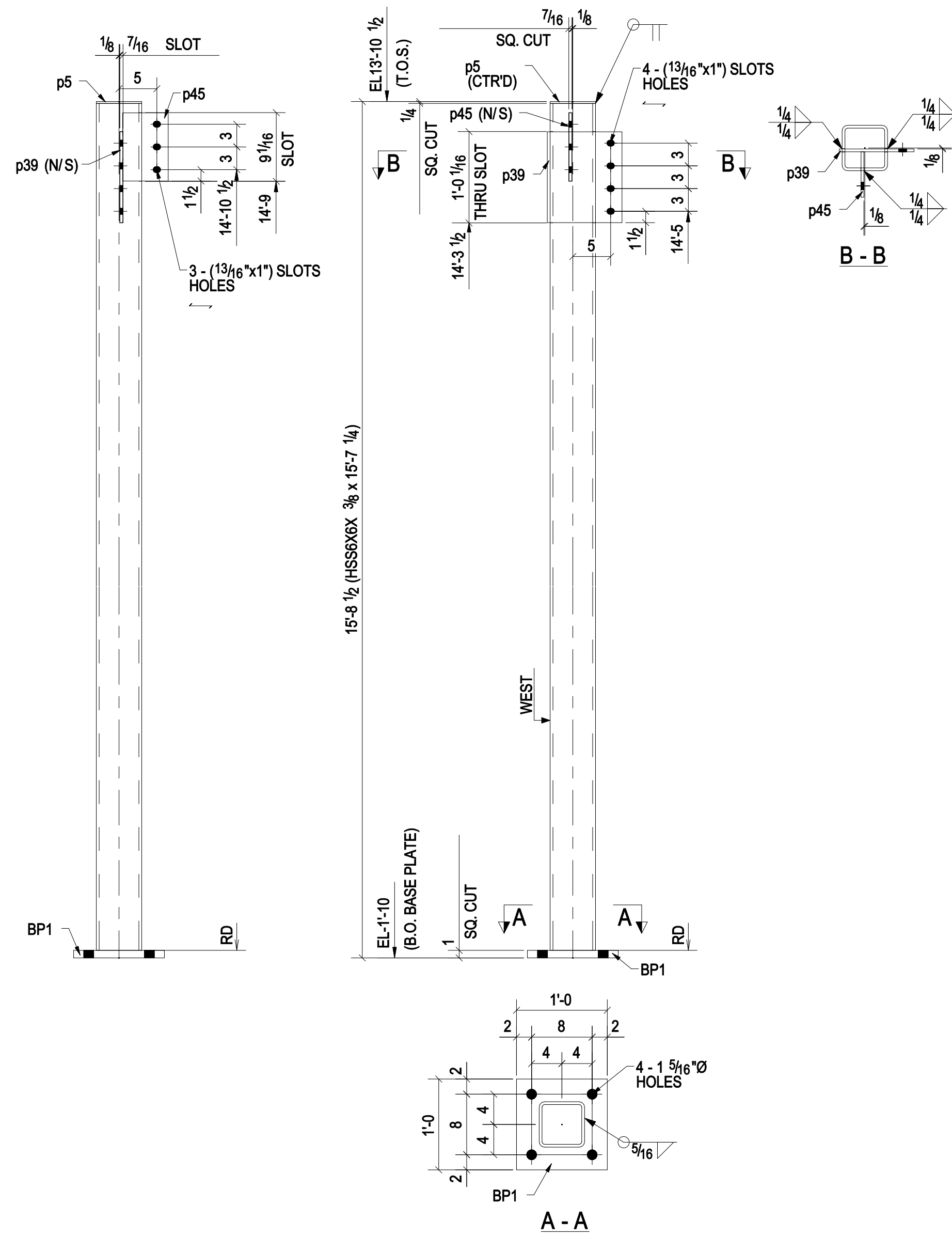
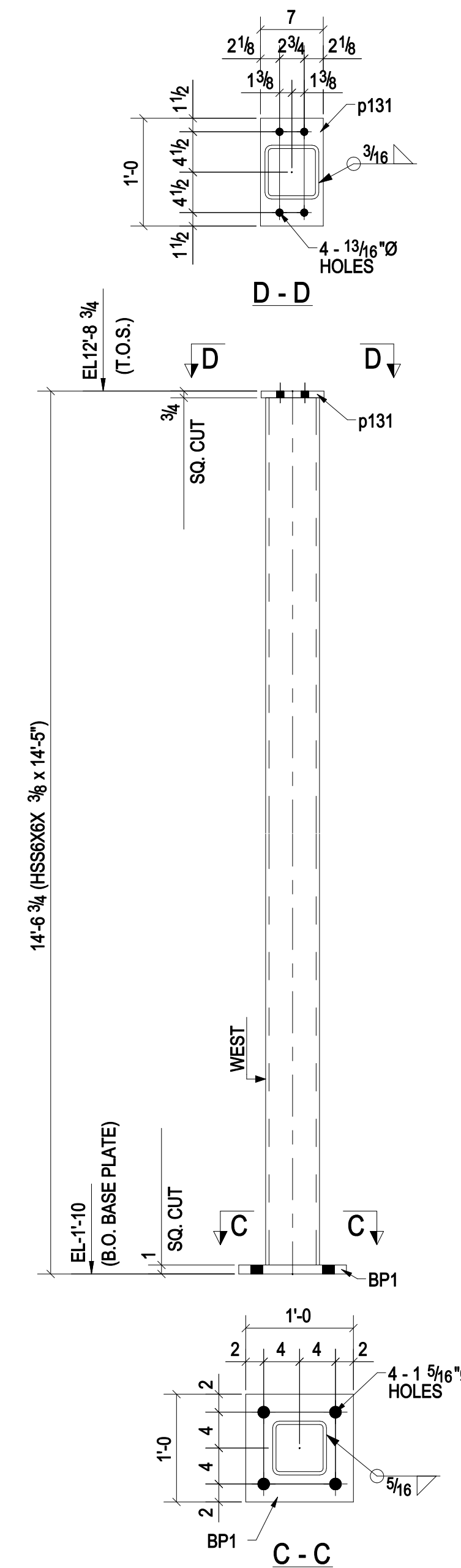


**BILL OF MATERIAL**

MARK	QTY	DESCRIPTION	LENGTH	WEIGHT	REMARKS
101C1	1	COLUMN			
101C1	1	HSS6X3/8	15'-7 1/4"	403	A500-GR.B
BP1	1	FL1'X12"	1'-0"	41	A36
p5	1	FL14"X8"	0'-0"	3	A36
p39	1	PL3/8"X9 7/8"	1'-0"	13	A36
p45	1	FL3/8"X8"	0'-0"	6	A36
101C2	1	COLUMN			
101C2	1	HSS6X3/8	14'-0"	372	A500-GR.B
BP1	1	FL1'X12"	1'-0"	41	A36
p131	1	FL3/4"X7"	1'-0"	18	A36
TOTAL WEIGHT THIS DRAWING				885	



ONE - COLUMN - 101C1



ONE - COLUMN - 101C2

**PROJECT PHASING**

MARK	QTY	PHASE
101C1	1	Phase 1
101C2	1	Phase 1

Total Qty.	Unit Qty.	Bolt Size & Length
4	4	BOLT 3/4" Ø A325N 0'-2 1/4"

<p>05/26/14 FOR APPROVAL</p>		<p>PRINT RECORD</p>		<p>SHOP DRAWING DISCLAIMER</p> <p>ALL INFORMATION PROVIDED ON THESE DRAWINGS ARE PREPARED IN ACCORDANCE TO THE CONTRACT DOCUMENTS AND THE SPECIFICATIONS. ALL CLOSED AREAS SHOW ARE DUE TO LACK OF INFORMATION PROVIDED BY THE CONTRACT DOCUMENTS OR SPECIFICATIONS, BUT PREPARED WITH ALL THE INFORMATION AVAILABLE TO US. WE MUST HAVE THESE AREAS ANSWERED BY THE GENERAL CONTRACTOR, ARCHITECT, ENGINEER, BEFORE WE CAN START FABRICATING ANY MATERIAL. PLEASE RESPOND WITH THIS INFORMATION BY MARKING UP OUR SHOP DRAWINGS.</p>					
DATE	APP.	SHOP	FIELD	DIST.	COORD.	F.C.	OFFICE		
MATERIAL:		HOLE SIZE:		BOLT GRADE:		MINIMUM WELD:		ELECTRODE:	
A36 UNO		13/16" Ø UNO		A325-N UNO		3/16"		E-70XX	
ARCH:				JOB NAME & LOCATION:					
ENGR:									
CONTR.:									
REF:		JOB:		14-111					
DRAWN BY: AK		05/26/14		CHECKED BY: SK		05/26/14		SHEET: 101	
SHEET TITLE: COLUMN		MODIFIED DATE: 05/28/14		LAST PLOT DATE: 05/28/14		CAD FILENAME: 101			