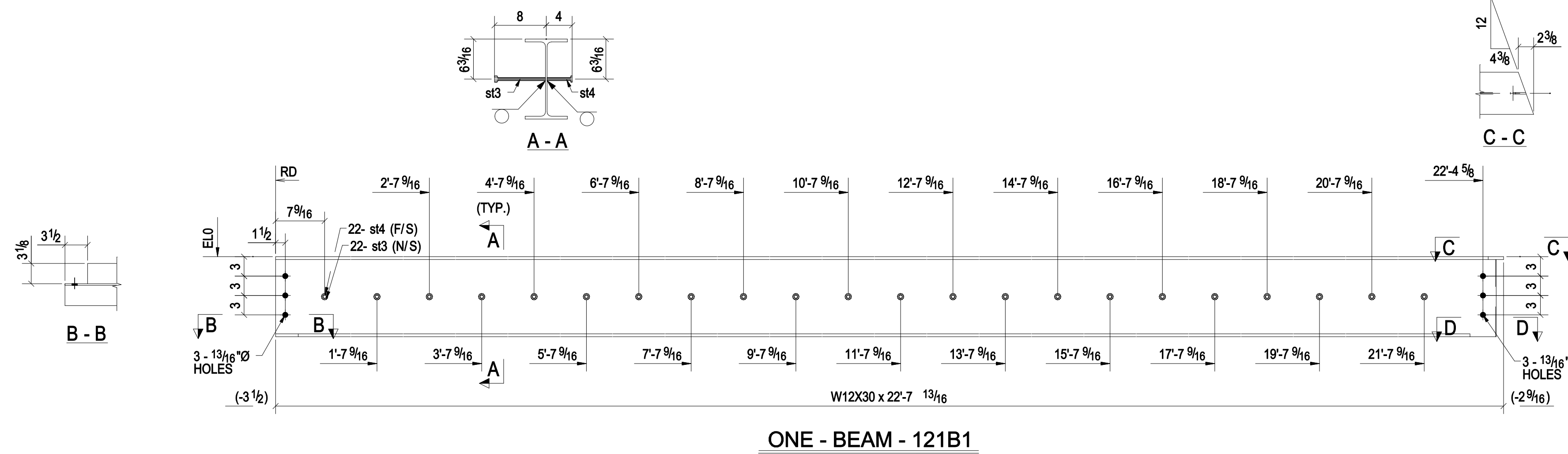
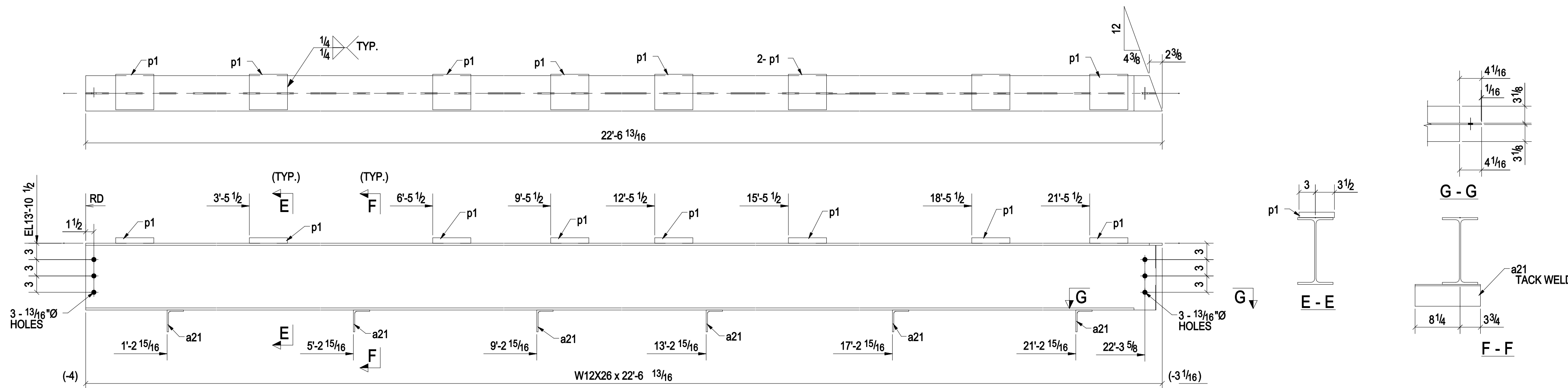


**BILL OF MATERIAL**

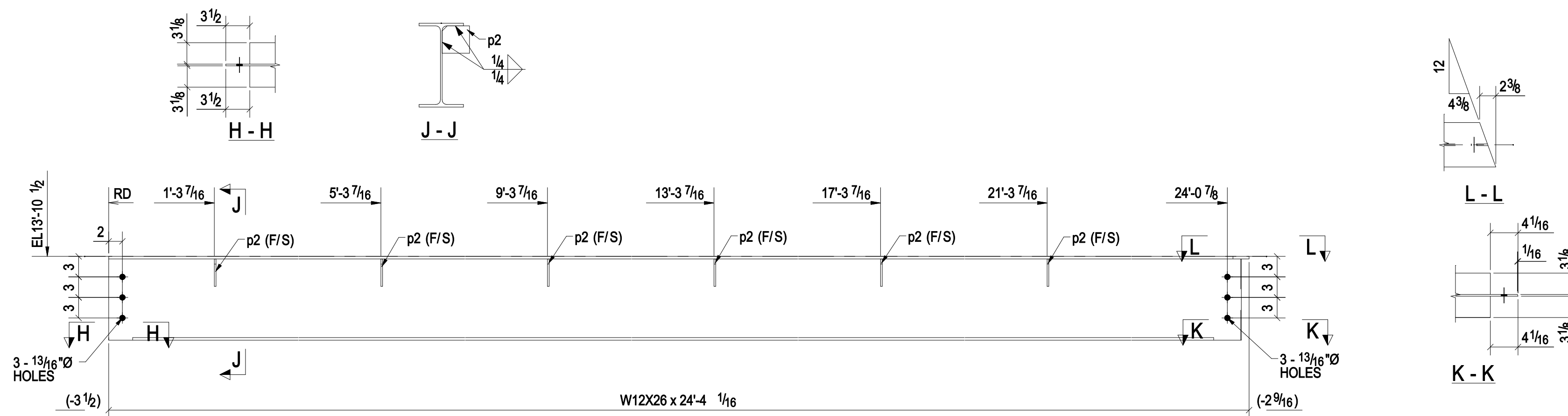
MARK	QTY	DESCRIPTION	LENGTH	WEIGHT	REMARKS
121B1	1	BEAM			
121B1	1	W12X30	22'-7 13/16"	678	A992
#3	22	STUD_12-DIA	0'-7 7/8"	11	
#4	22	STUD_12-DIA	0'-3 7/8"	5	
121B2	1	BEAM			
121B2	1	W12X26	22'-6 13/16"	588	A992
a21	6	L4X3X1/4	1'-0"	35	TACK WELD A36
p1	8	FL17X8 1/2"	0'-7"	103	A36
121B3	1	BEAM			
121B3	1	W12X26	24'-4 1/16"	634	A992
p2	6	FL147X4"	0'-4"	7	A36
TOTAL WEIGHT THIS DRAWING				2059	



**ONE - BEAM - 121B1**



**ONE - BEAM - 121B2**



**ONE - BEAM - 121B3**

**PROJECT PHASING**

MARK	QTY	PHASE
121B1	1	Phase 1
121B2	1	Phase 1
121B3	1	Phase 1

**Total Qty. Unit Qty. Bolt Size & Length**

6	6	BOLT 3/4" Ø A325N	0'-1 3/4"
12	12	BOLT 3/4" Ø A325N	0'-2 1/4"

05/26/14		FOR APPROVAL	
PRINT RECORD			
DATE	APP.	SHOP	FIELD
MATERIAL: A36 UNO		HOLE SIZE: 13/16" Ø UNO	BOLT GRADE: A325-N UNO
		MINIMUM WELD: 3/16"	ELECTRODE: E-70XX
ARCH:		JOB NAME & LOCATION:	
ENGR:			
CONTR:			
REF:		JOB: 14-111	
DRAWN BY: DMT	05/26/14	CHECKED BY: SK	05/26/14
SHEET TITLE: BEAM		SHEET: 121	
MODIFIED DATE: 05/28/14		LAST PLOT DATE: 05/28/14	
		CAD FILENAME: 121	

