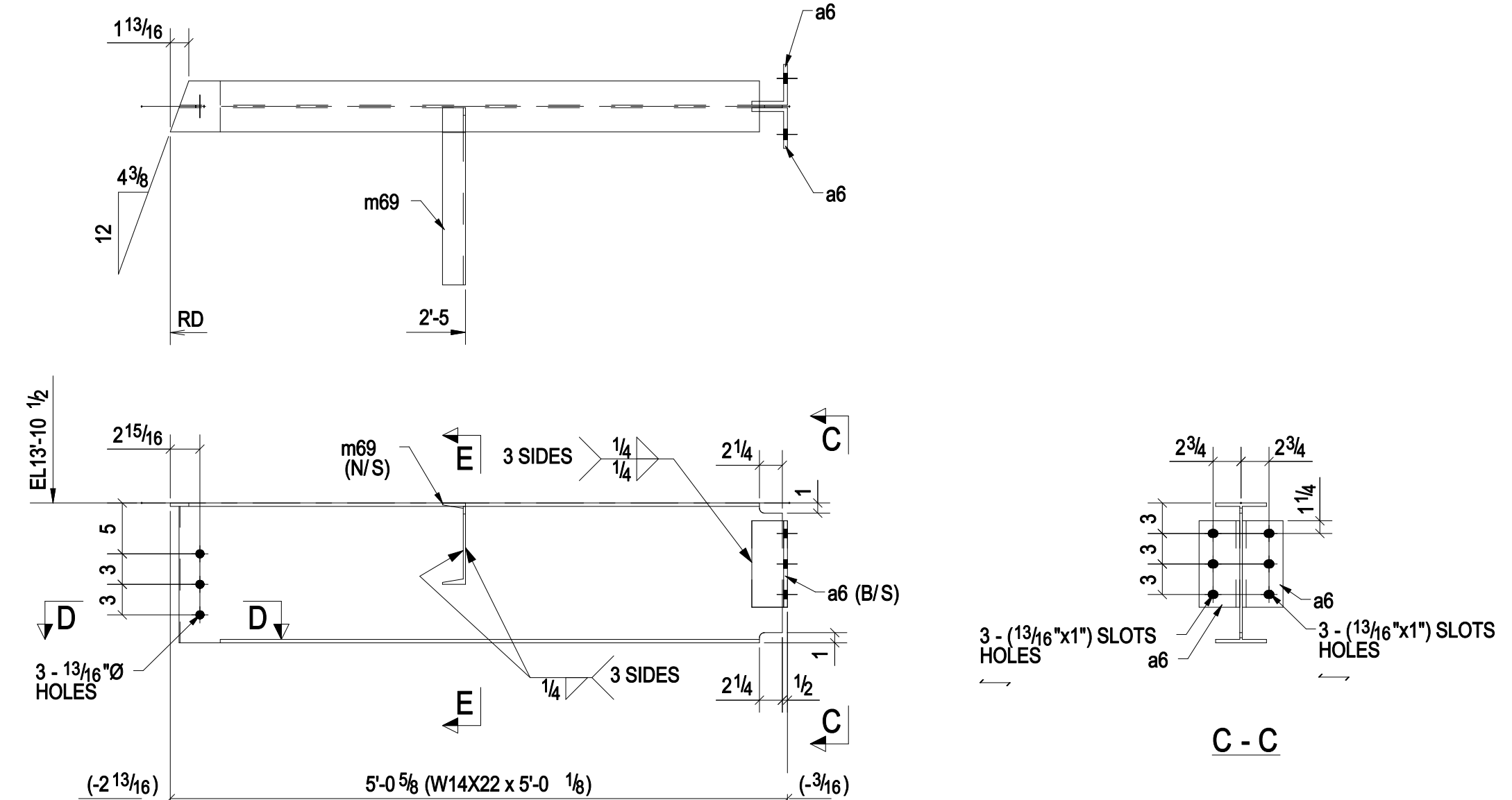
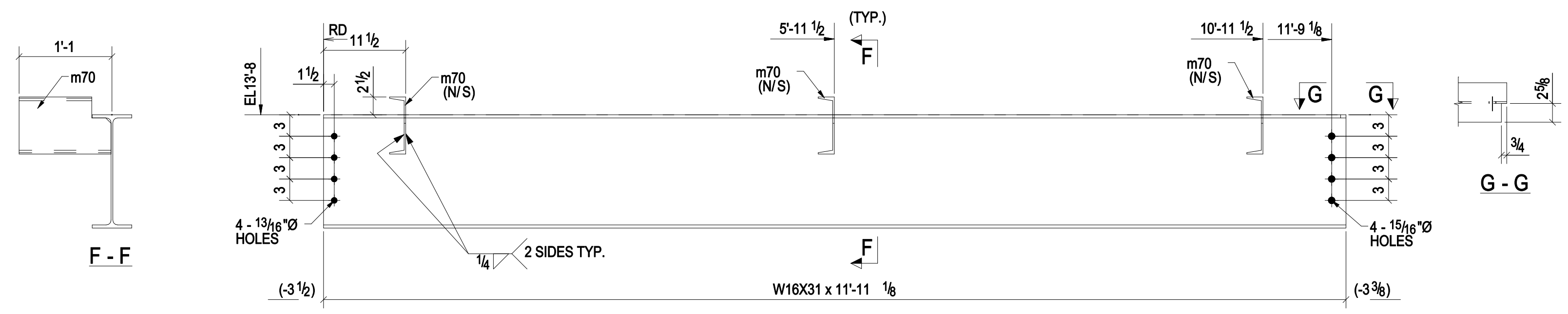


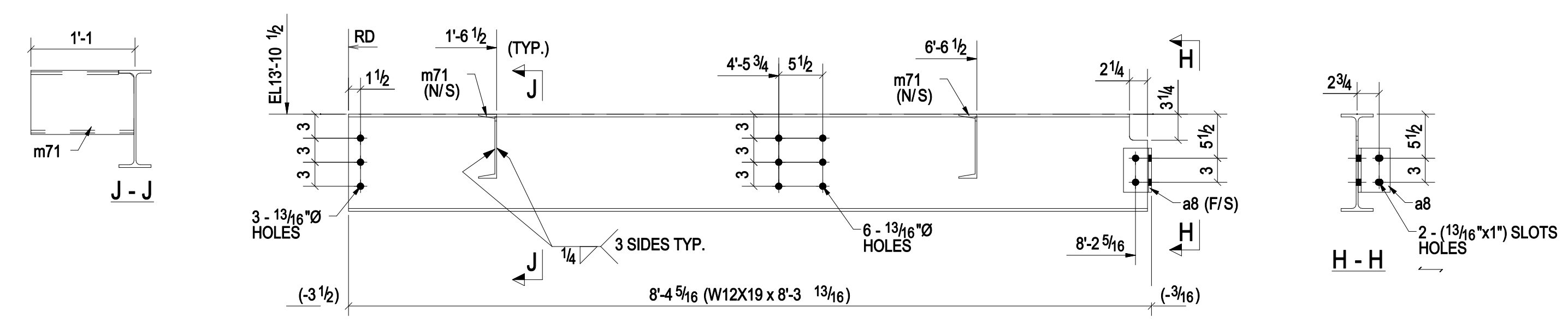
ONE - BEAM - 132B1



ONE - BEAM - 132B2



ONE - BEAM - 132B3



ONE - BEAM - 132B4

BILL OF MATERIAL

| MARK | QTY | DESCRIPTION | LENGTH | WEIGHT | REMARKS |
|---------------------------|-----|-------------|-------------|--------|---------|
| 132B1 | 1 | BEAM | | | |
| 132B1 | 1 | W18X35 | 32'-5 9/16" | 1138 | A992 |
| 132B2 | 1 | BEAM | | | |
| 132B2 | 1 | W14X22 | 5'-0 1/8" | 111 | A992 |
| a6 | 2 | L4X3-12X3/8 | 0'-6 1/2" | 13 | A36 |
| m69 | 1 | C8X11.5 | 1'-5 7/8" | 17 | A36 |
| 132B3 | 1 | BEAM | | | |
| 132B3 | 1 | W16X31 | 11'-11 1/8" | 371 | A992 |
| m70 | 3 | C8X11.5 | 1'-0 7/8" | 37 | A36 |
| 132B4 | 1 | BEAM | | | |
| 132B4 | 1 | W12X19 | 8'-3 13/16" | 158 | A992 |
| a8 | 1 | L4X3-12X3/8 | 0'-6 1/2" | 4 | A36 |
| m71 | 2 | C8X11.5 | 1'-0 7/8" | 25 | A36 |
| TOTAL WEIGHT THIS DRAWING | | | | 1872 | |

| PROJECT PHASING | | |
|-----------------|-----|---------|
| MARK | QTY | PHASE |
| 132B1 | 1 | Phase 1 |
| 132B2 | 1 | Phase 1 |
| 132B3 | 1 | Phase 1 |
| 132B4 | 1 | Phase 1 |

| Total Qty. | Unit Qty. | Bolt Size & Length |
|------------|-----------|-----------------------------|
| 7 | 7 | BOLT 3/4" Ø A325N 0'-1 3/4" |
| 8 | 8 | BOLT 3/4" Ø A325N 0'-2" |
| 5 | 5 | BOLT 3/4" Ø A325N 0'-2 1/4" |
| 4 | 4 | BOLT 3/4" Ø A325N 0'-2 1/2" |
| 4 | 4 | BOLT 7/8" Ø A325X 0'-2" |

| | | | |
|-------------------------|----------|--------------------------|------------------------|
| 05/26/14 | | FOR APPROVAL | |
| PRINT RECORD | | | |
| DATE | APP. | SHOP | FIELD |
| | | | |
| | | | |
| | | | |
| MATERIAL: A36 UNO | | HOLE SIZE: 13/16" Ø UNO | BOLT GRADE: A325-N UNO |
| | | MINIMUM WELD: 3/16" | ELECTRODE: E-70XX |
| ARCH: | | JOB NAME & LOCATION: | |
| ENGR: | | | |
| CONTR: | | | |
| REF: | | JOB: 14-111 | |
| DRAWN BY: DMT | 05/26/14 | CHECKED BY: SK | 05/26/14 |
| SHEET TITLE: BEAM | | SHEET: 132 | |
| MODIFIED DATE: 05/28/14 | | LAST PLOT DATE: 05/28/14 | |
| | | CAD FILENAME: 132 | |

