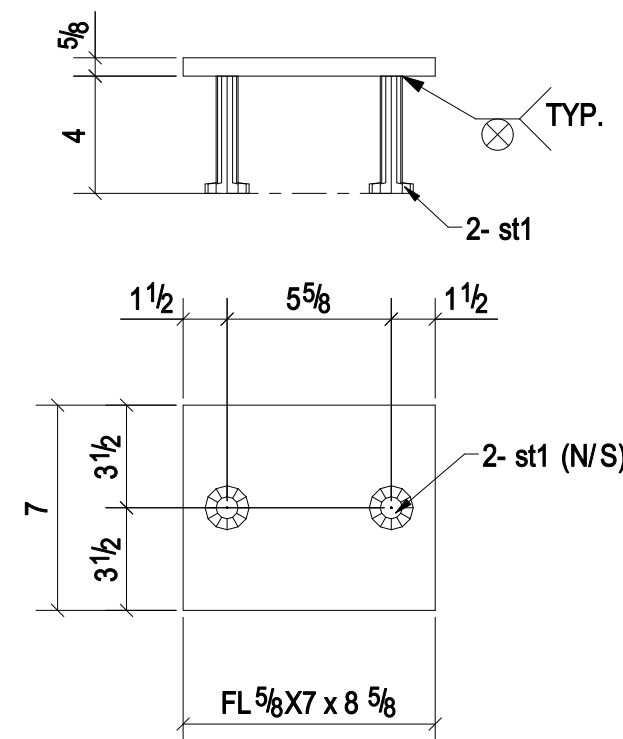
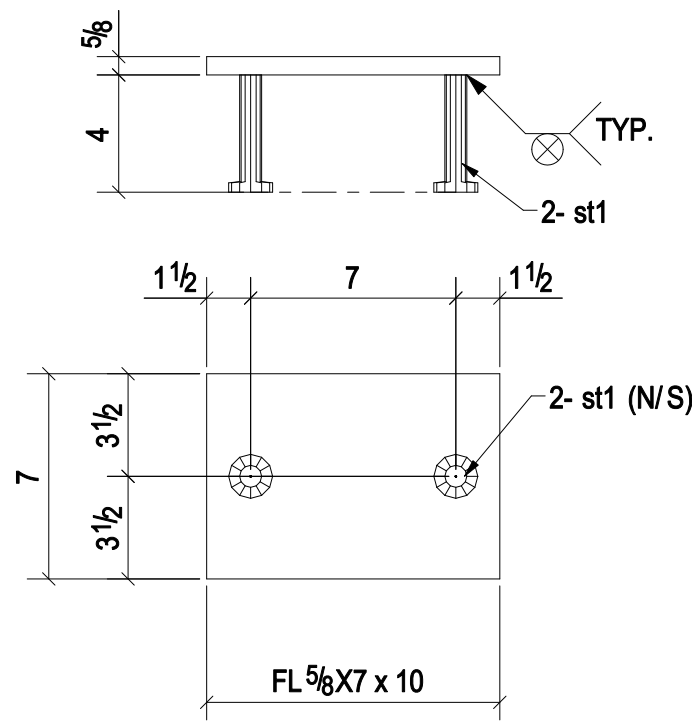


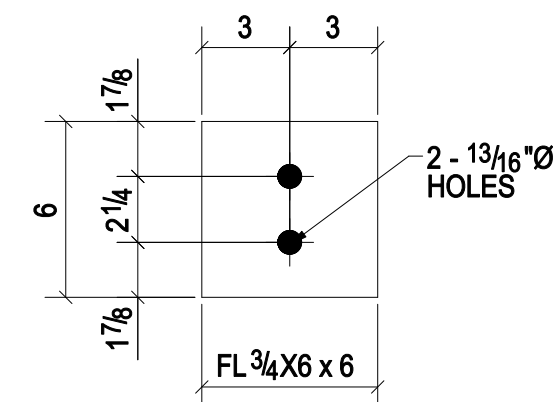
9 - EMBED PLATES - 141EM1
(NO PAINT)



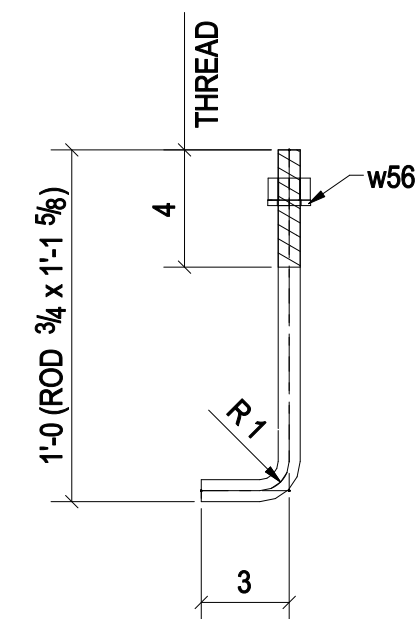
ONE - EMBED PLATE - 141EM2
(NO PAINT)



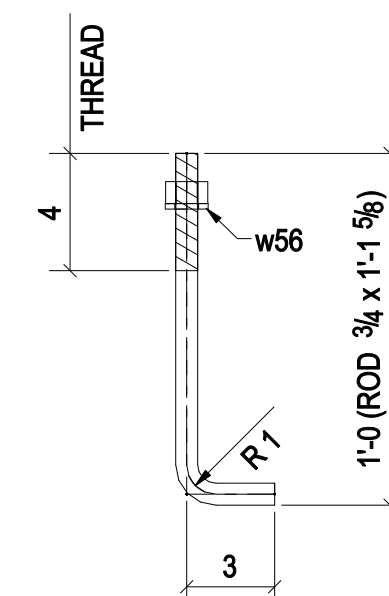
ONE - EMBED PLATE - 141EM3
(NO PAINT)



ONE - EMBED PLATE - 141EM4
(NO PAINT)



ONE - ANCHOR BOLT - 141AB1
(NO PAINT)



ONE - ANCHOR BOLT - 141AB2
(NO PAINT)

BILL OF MATERIAL

MARK	QTY	DESCRIPTION	LENGTH	WEIGHT	REMARKS
141AB1	1	ANCHOR_BOLT			
141AB1	1	ROD3/4"	1'-1 5/8"	2	F1554-38
	1	3/4_HEAVY_HEX_NUT		0	
	1	3/4_WASHER		0	
141AB2	1	ANCHOR_BOLT			
141AB2	1	ROD3/4"	1'-1 5/8"	2	F1554-38
	1	3/4_HEAVY_HEX_NUT		0	
	1	3/4_WASHER		0	
141EM1	9	EMBED_PLATES			
141EM1	9	FL1/2X6"	0'-10"	77	A36
#12	18	STUD_1/2-DIA	0'-5"	6	A108
141EM2	1	EMBED_PLATE			
141EM2	1	FL5/8X7"	0'-8 5/8"	11	A36
#11	2	STUD_3/4-DIA	0'-4"	1	A108
141EM3	1	EMBED_PLATE			
141EM3	1	FL5/8X7"	0'-10"	12	A36
#11	2	STUD_3/4-DIA	0'-4"	1	A108
141EM4	1	EMBED_PLATE			
141EM4	1	FL3/4X6"	0'-8"	8	A36
TOTAL WEIGHT THIS DRAWING				119	

PROJECT PHASING

MARK	QTY	PHASE
141AB1	1	Phase 1
141AB2	1	Phase 1
141EM1	9	Phase 1
141EM2	1	Phase 1
141EM3	1	Phase 1
141EM4	1	Phase 1

05/26/14		FOR APPROVAL					
PRINT RECORD							
DATE	APP.	SHOP	FIELD	DIST.	COORD.	F.C.	OFFICE
MATERIAL: A36 UNO				HOLE SIZE: 13/16" Ø UNO		BOLT GRADE: A325-N UNO	
				MINIMUM WELD: 3/16"		ELECTRODE: E-70XX	
ARCH:				JOB NAME & LOCATION:			
ENGR:							
CONTR:							
REF:				JOB: 14-111			
DRAWN BY: ZA		05/26/14		CHECKED BY: SK		05/26/14	
SHEET TITLE: EMBED PLATE				SHEET: 141			
MODIFIED DATE: 05/28/14		LAST PLOT DATE: 05/28/14		CAD FILENAME: 141			

