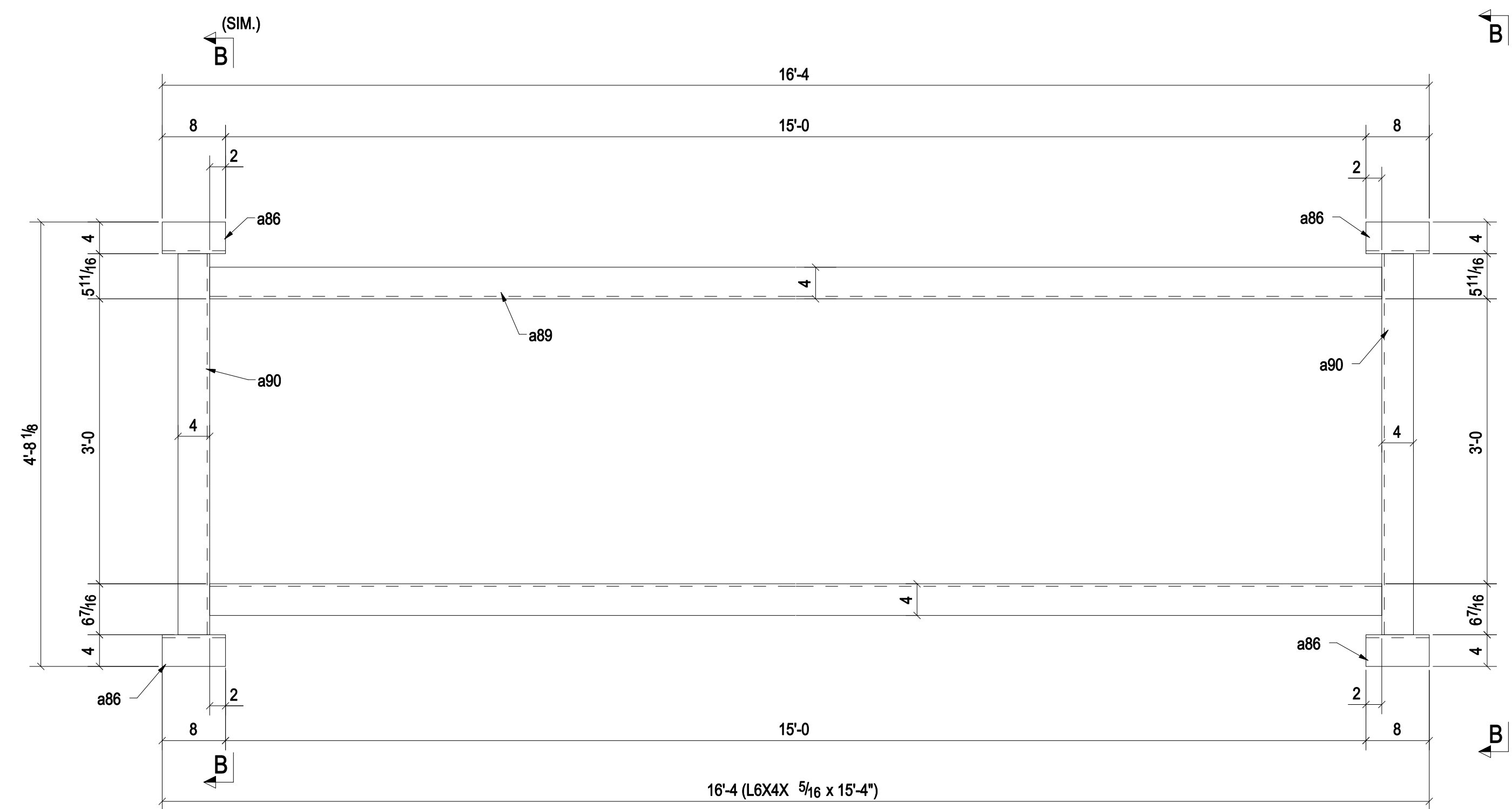


ONE - FRAME - 142FR1



ONE - FRAME - 142FR2

BILL OF MATERIAL

MARK	QTY	DESCRIPTION	LENGTH	WEIGHT	REMARKS
142FR1	1	FRAME			
142FR1	1	L6X4X5/16	14'-0"	150	A36
a86	4	L6X4X3/8	0'-8"	33	A36
a87	2	L6X4X5/16	4'-3 1/4"	88	A36
a88	1	L6X4X5/16	14'-0"	150	A36
142FR2	1	FRAME			
142FR2	1	L6X4X5/16	15'-4"	158	A36
a86	4	L6X4X3/8	0'-8"	33	A36
a89	1	L6X4X5/16	15'-4"	158	A36
a90	2	L6X4X5/16	4'-0 1/8"	83	A36
TOTAL WEIGHT THIS DRAWING				652	

PROJECT PHASING		
MARK	QTY	PHASE
142FR1	1	Phase 1
142FR2	1	Phase 1

05/26/14 FOR APPROVAL PRINT RECORD		SHOP DRAWING DISCLAIMER <small>ALL INFORMATION PROVIDED ON THESE DRAWINGS ARE PREPARED IN ACCORDANCE TO THE CONTRACT DOCUMENTS AND THE SPECIFICATIONS. ALL CLOUSED AREAS SHOW ARE DUE TO LACK OF INFORMATION PROVIDED BY THE CONTRACT DOCUMENTS OR SPECIFICATIONS, BUT PREPARED WITH ALL THE INFORMATION AVAILABLE TO US. WE MUST HAVE THESE AREAS ANSWERED BY THE GENERAL CONTRACTOR, ARCHITECT, ENGINEER, BEFORE WE CAN START FABRICATING ANY MATERIAL. PLEASE RESPOND WITH THIS INFORMATION BY MARKING UP OUR SHOP DRAWINGS.</small>
DATE: 05/26/14 APP.: SHOP: FIELD: DIST.: COORD.: F.C.: OFFICE:	MATERIAL: A36 UNO HOLE SIZE: 13/16" Ø UNO BOLT GRADE: A325-N UNO MINIMUM WELD: 3/16" ELECTRODE: E-70XX	
ARCH: _____ ENGR: _____ CONTR: _____		
REF: _____ DRAWN BY: ZA 05/26/14 SHEET TITLE: FRAME		
CHECKED BY: SK 05/26/14 MODIFIED DATE: 05/28/14 LAST PLOT DATE: 05/28/14 CAD FILENAME: 142		JOB: 14-111 SHEET: 142