

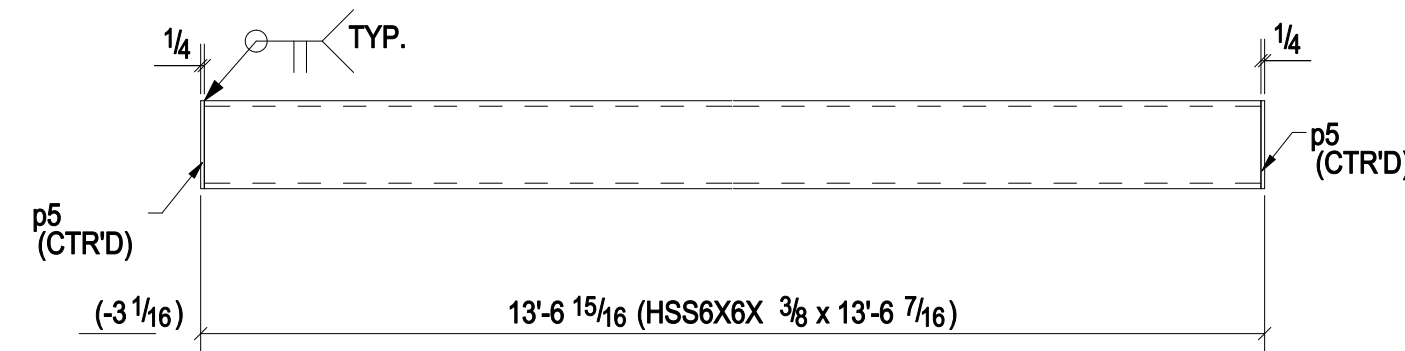
BILL OF MATERIAL

MARK	QTY	DESCRIPTION	LENGTH	WEIGHT	REMARKS
149M1	1	MISC			
149M1	1	HSS6X6X3/8	13'-6 7/16"	349	A500-GR.B
p5	2	FL1/4"x8"	0'-6"	5	A36
149M2	1	MISC			
149M2	1	HSS6X6X3/8	14'-0 3/4"	363	A500-GR.B
p5	1	FL1/4"x8"	0'-6"	3	A36
p64	2	FL3/8"x3"	0'-6"	4	A36
149M3	1	MISC			
149M3	1	HSS6X6X3/8	13'-1 3/8"	338	A500-GR.B
p5	2	FL1/4"x8"	0'-6"	5	A36
149M4	3	MISCS			
149M4	3	HSS3-1/2X3-1/2X5/16	14'-1 1/2"	508	A500-GR.B
p4	6	FL1/4"x3 1/2"	0'-3 1/2"	5	A36
149M5	2	MISCS			
149M5	2	C6X8.2	1'-0 1/2"	17	A36
149M6	4	MISCS			
149M6	4	C6X8.2	1'-0 1/2"	34	A36
149M7	1	MISC			
149M7	1	L3X3X3/8	13'-2"	95	A36
149M8	1	MISC			
149M8	1	L3X3X3/8	7'-4"	53	A36
149M9	1	MISC			
149M9	1	L3X3X3/8	13'-2"	95	A36
149M10	1	MISC			
149M10	1	L3X3X3/8	7'-4"	53	A36
TOTAL WEIGHT THIS DRAWING				1925	

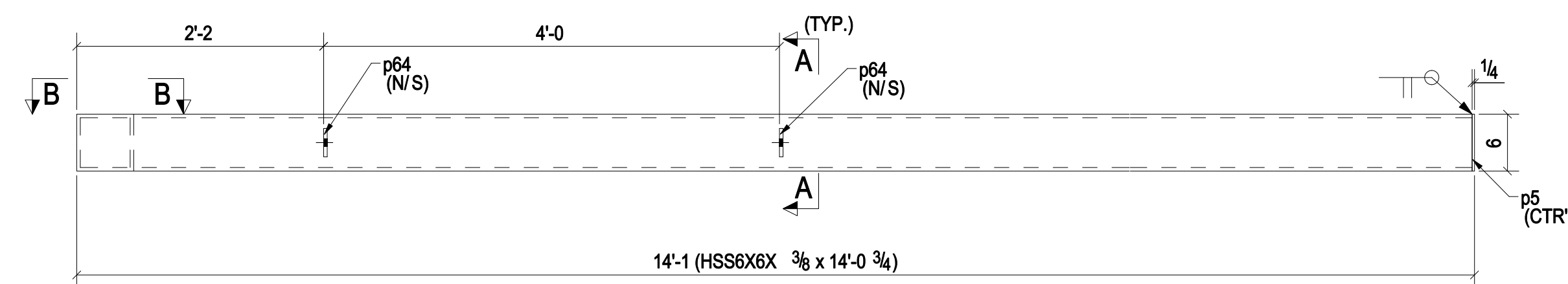
PROJECT PHASING

MARK	QTY	PHASE
149M1	1	Phase 1
149M2	1	Phase 1
149M3	1	Phase 1
149M4	3	Phase 1
149M5	2	Phase 1
149M6	4	Phase 1
149M7	1	Phase 1
149M8	1	Phase 1
149M9	1	Phase 1
149M10	1	Phase 1

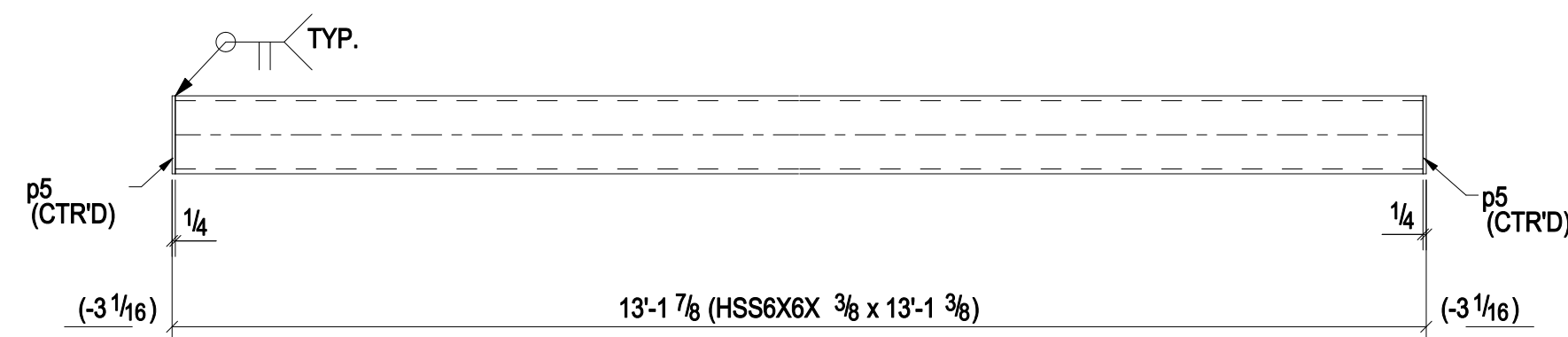
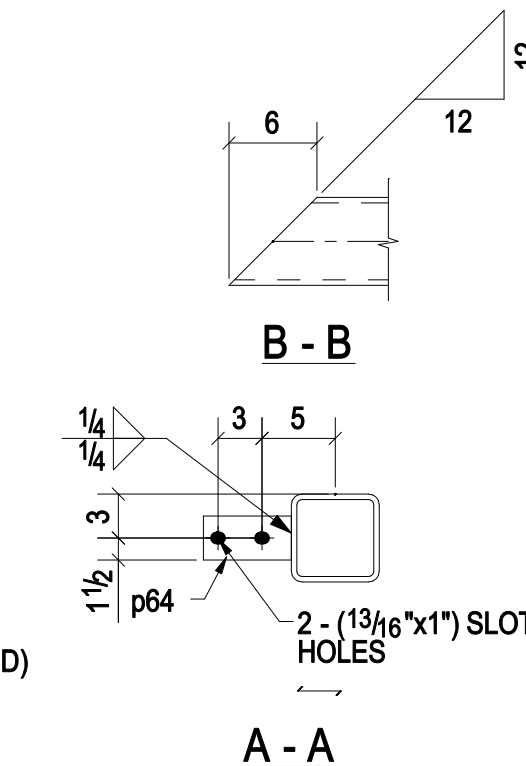
Total Qty.	Unit Qty.	Bolt Size & Length
12	4	BOLT 3/4" Ø A325N 0'-1 3/4"



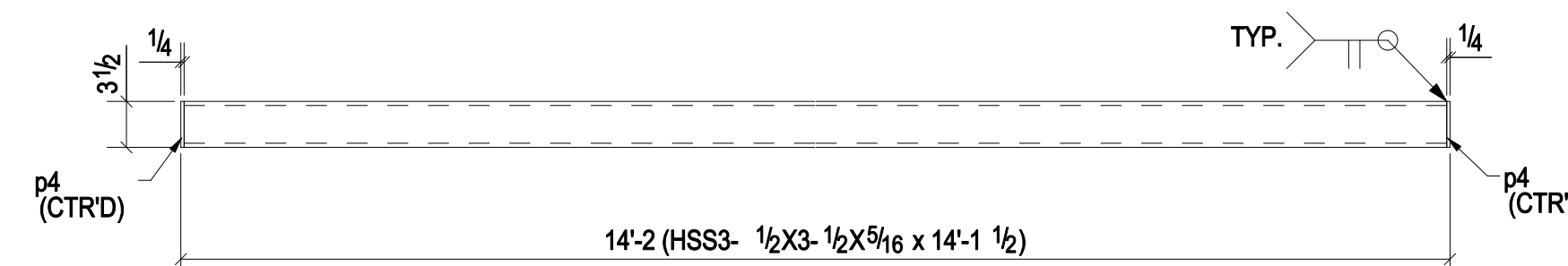
ONE - MISC - 149M1



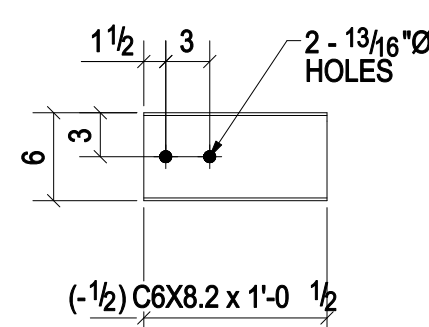
ONE - MISC - 149M2



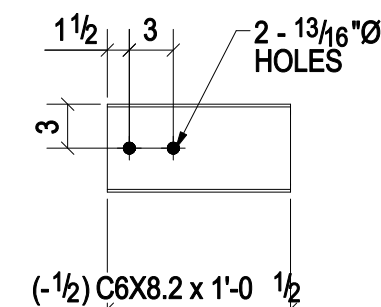
ONE - MISC - 149M3



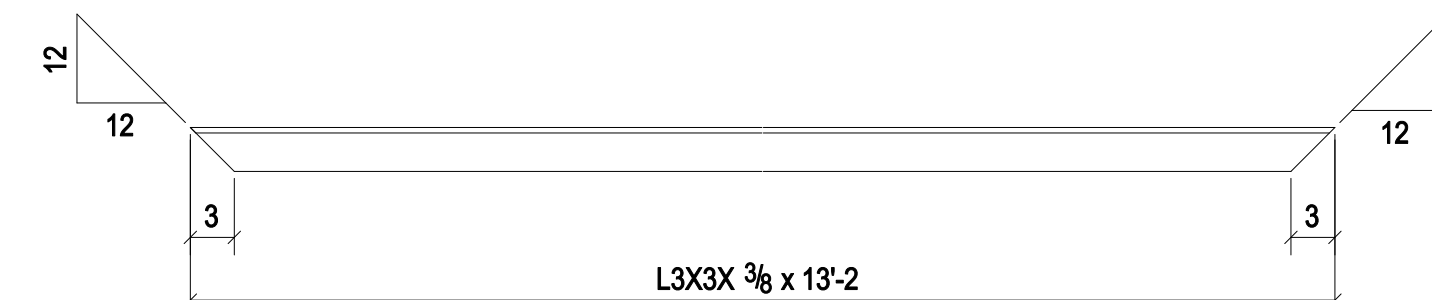
3 - MISCS - 149M4



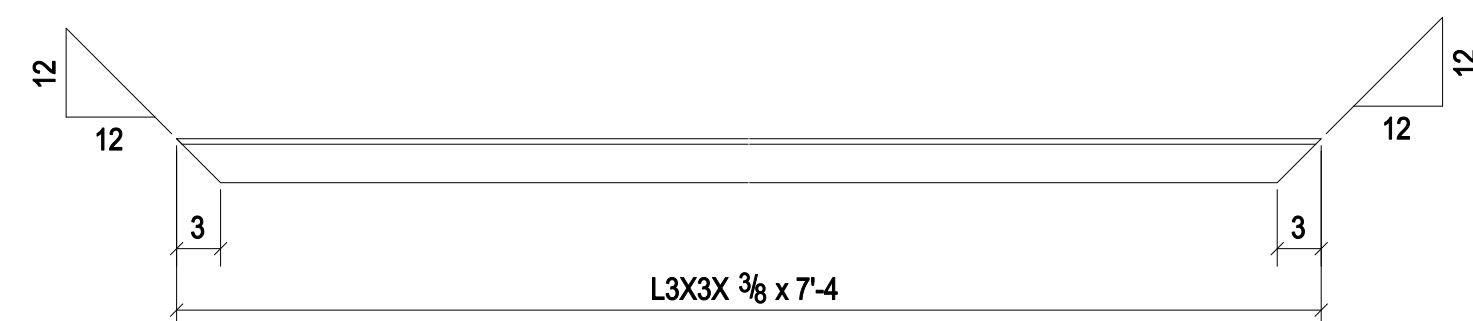
2 - MISCS - 149M5



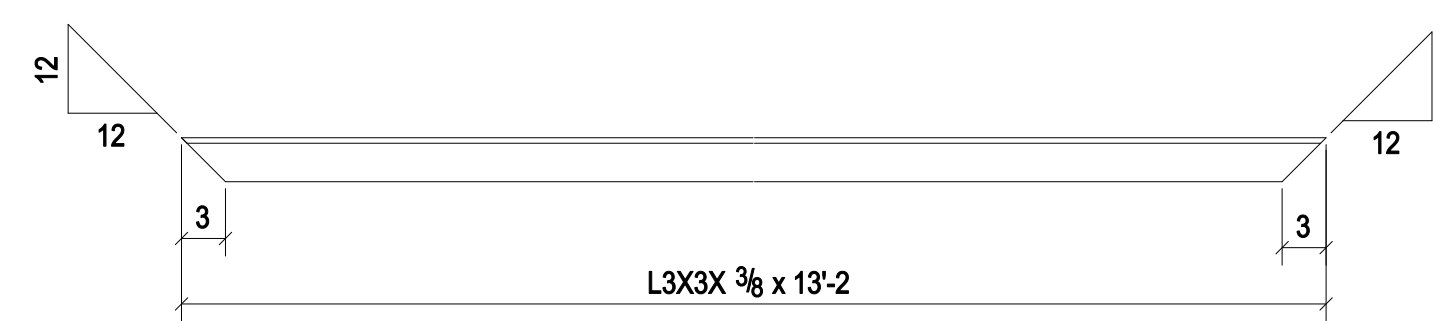
4 - MISCS - 149M6



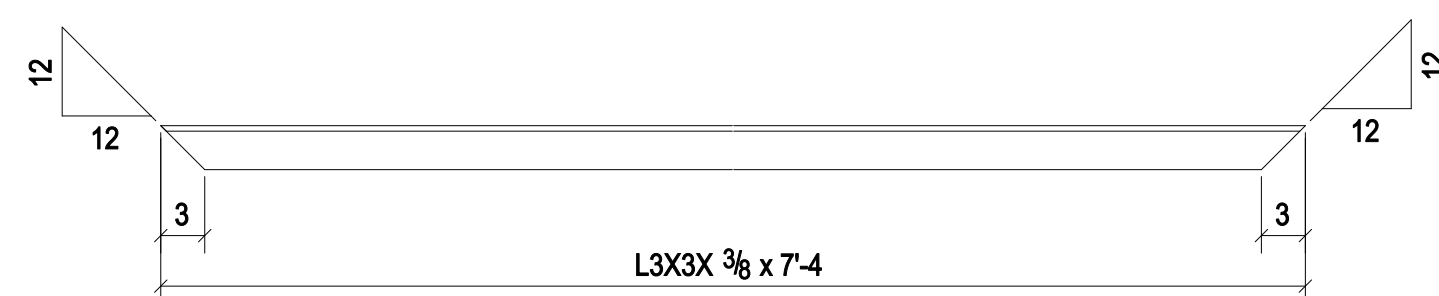
ONE - MISC - 149M7



ONE - MISC - 149M8



ONE - MISC - 149M9



ONE - MISC - 149M10

<p>05/26/14 FOR APPROVAL</p> <p>PRINT RECORD</p>							<p>SHOP DRAWING DISCLAIMER</p> <p>ALL INFORMATION PROVIDED ON THESE DRAWINGS ARE PREPARED IN ACCORDANCE TO THE CONTRACT DOCUMENTS AND THE SPECIFICATIONS. ALL DIMENSIONS SHOWN ARE DUE TO LACK OF INFORMATION PROVIDED BY THE CONTRACT DOCUMENTS OR SPECIFICATIONS, BUT PREPARED WITH ALL THE INFORMATION AVAILABLE TO US. WE MUST HAVE THESE AREAS ANSWERED BY THE GENERAL CONTRACTOR, ARCHITECT, ENGINEER, BEFORE WE CAN START FABRICATING ANY MATERIAL. PLEASE RESPOND WITH THIS INFORMATION BY MARKING UP OUR SHOP DRAWINGS.</p>		
DATE	APP.	SHOP	FIELD	DIST.	COORD.	F.C.	OFFICE		
MATERIAL: A36 UNO		HOLE SIZE: 13/16" Ø UNO		BOLT GRADE: A325-N UNO		MINIMUM WELD: 3/16"		ELECTRODE: E-70XX	
<p>ARCH. _____</p> <p>ENGR. _____</p> <p>CONTR. _____</p>								<p>JOB NAME & LOCATION:</p>	
<p>REF: DRAWN BY: ZA 05/26/14 CHECKED BY: SK 05/26/14 SHEET TITLE: MISC</p>						<p>JOB: 14-111 SHEET: 149</p>			
<p>MODIFIED DATE: 05/26/14 LAST PLOT DATE: 05/26/14 CAD FILENAME: 149</p>									