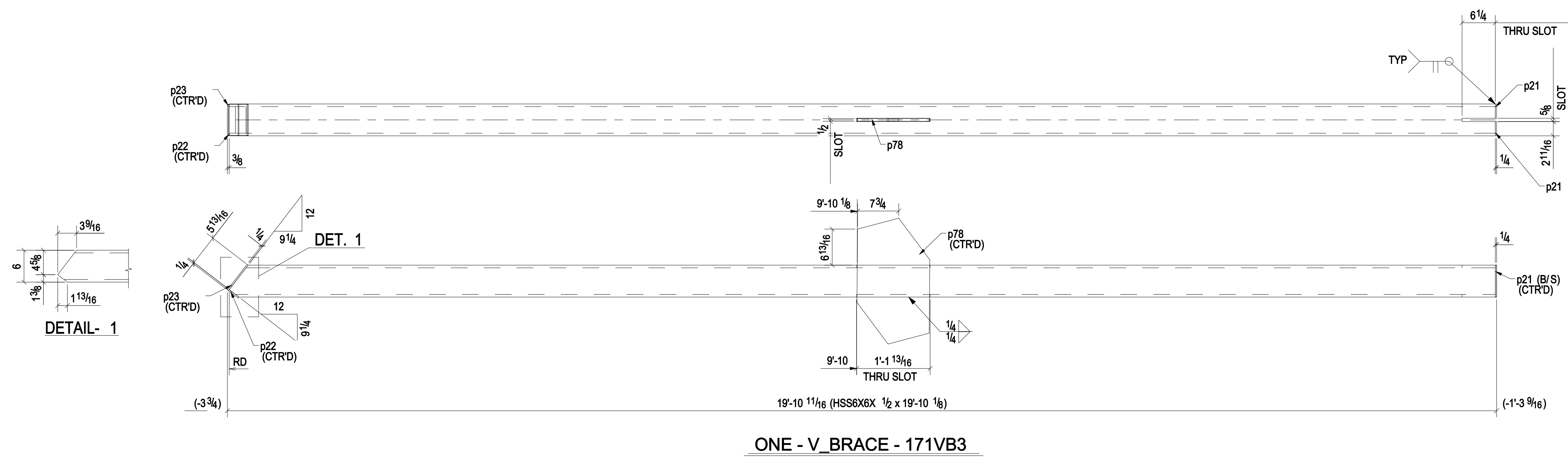
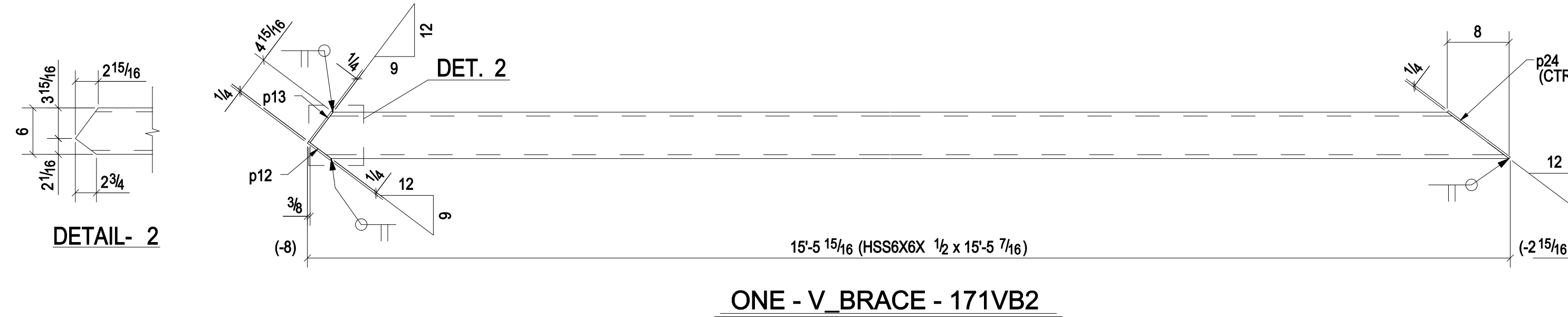
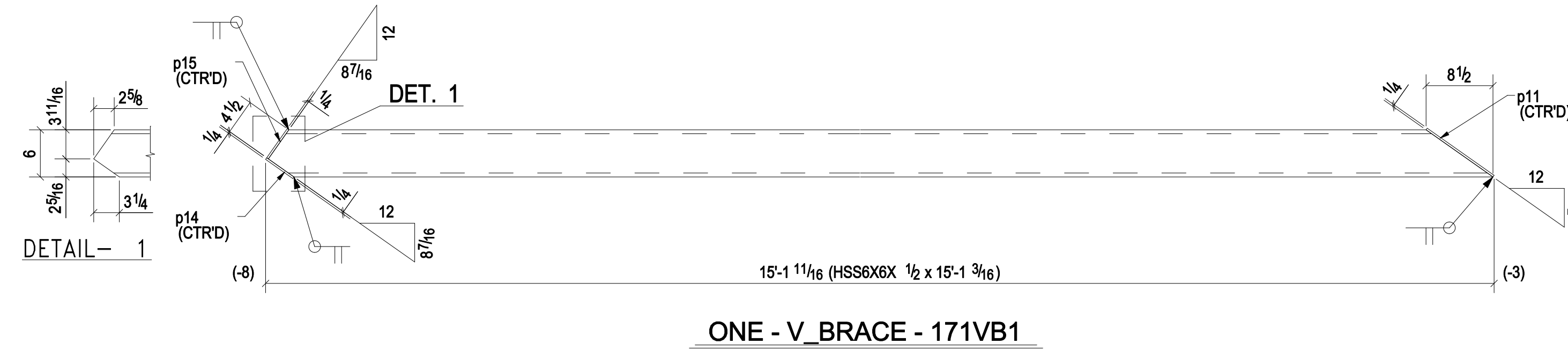


BILL OF MATERIAL

MARK	QTY	DESCRIPTION	LENGTH	WEIGHT	REMARKS
171VB1	1	V_BRACE			
171VB1	1	HSS6X6X1/2	15'-1 3/16"	500	A500-GR.B
p11	1	PL1/4"x8"	0'-10 7/16"	4	A36
p14	1	PL1/4"x4 1/4"	0'-0"	2	A36
p15	1	PL1/4"x4 1/2"	0'-0"	2	A36
171VB2	1	V_BRACE			
171VB2	1	HSS6X6X1/2	15'-5 7/16"	512	A500-GR.B
p12	1	PL1/4"x3 1/16"	0'-0"	2	A36
p13	1	PL1/4"x5 15/16"	0'-0"	2	A36
p24	1	PL1/4"x5 7/8"	0'-10"	4	A36
171VB3	1	V_BRACE			
171VB3	1	HSS6X6X1/2	19'-10 1/16"	658	A500-GR.B
p21	2	PL1/4"x2 1/16"	0'-0"	2	A36
p22	1	PL1/4"x2 5/16"	0'-6 7/8"	1	A36
p23	1	PL1/4"x5 7/8"	0'-8 1/16"	3	A36
p78	1	PL1/2"x13 5/8"	1'-11 1/16"	37	A36
TOTAL WEIGHT THIS DRAWING				1729	



PROJECT PHASING		
MARK	QTY	PHASE
171VB1	1	Phase 1
171VB2	1	Phase 1
171VB3	1	Phase 1

<p>05/26/14 FOR APPROVAL</p> <p>PRINT RECORD</p>							<p>SHOP DRAWING DISCLAIMER</p> <p>ALL INFORMATION PROVIDED ON THESE DRAWINGS ARE PREPARED IN ACCORDANCE TO THE CONTRACT DOCUMENTS AND THE SPECIFICATIONS. ALL CLOSED AREAS SHOW ARE DUE TO LACK OF INFORMATION PROVIDED BY THE CONTRACT DOCUMENTS OR SPECIFICATIONS, BUT PREPARED WITH ALL THE INFORMATION AVAILABLE TO US. WE MUST HAVE THESE AREAS ANSWERED BY THE GENERAL CONTRACTOR, ARCHITECT, ENGINEER, BEFORE WE CAN START FABRICATING ANY MATERIAL. PLEASE RESPOND WITH THIS INFORMATION BY MARKING UP OUR SHOP DRAWINGS.</p>	
DATE	APP.	SHOP	FIELD	DIST.	COORD.	F.C.		OFFICE
MATERIAL: A36 UNO		HOLE SIZE: 13/16" Ø UNO		BOLT GRADE: A325-N UNO		MINIMUM WELD: 3/16"		ELECTRODE: E-70XX
<p>ARCH: _____ JOB NAME & LOCATION: _____</p> <p>ENGR: _____</p> <p>CONTR: _____</p>								
<p>REF: _____</p> <p>DRAWN BY: DMT 05/26/14 CHECKED BY: SK 05/26/14</p> <p>SHEET TITLE: V_BRACE</p> <p>MODIFIED DATE: 05/28/14 LAST PLOT DATE: 05/28/14 CAD FILENAME: 171</p>						<p>JOB: 14-111</p> <p>SHEET: 171</p>		