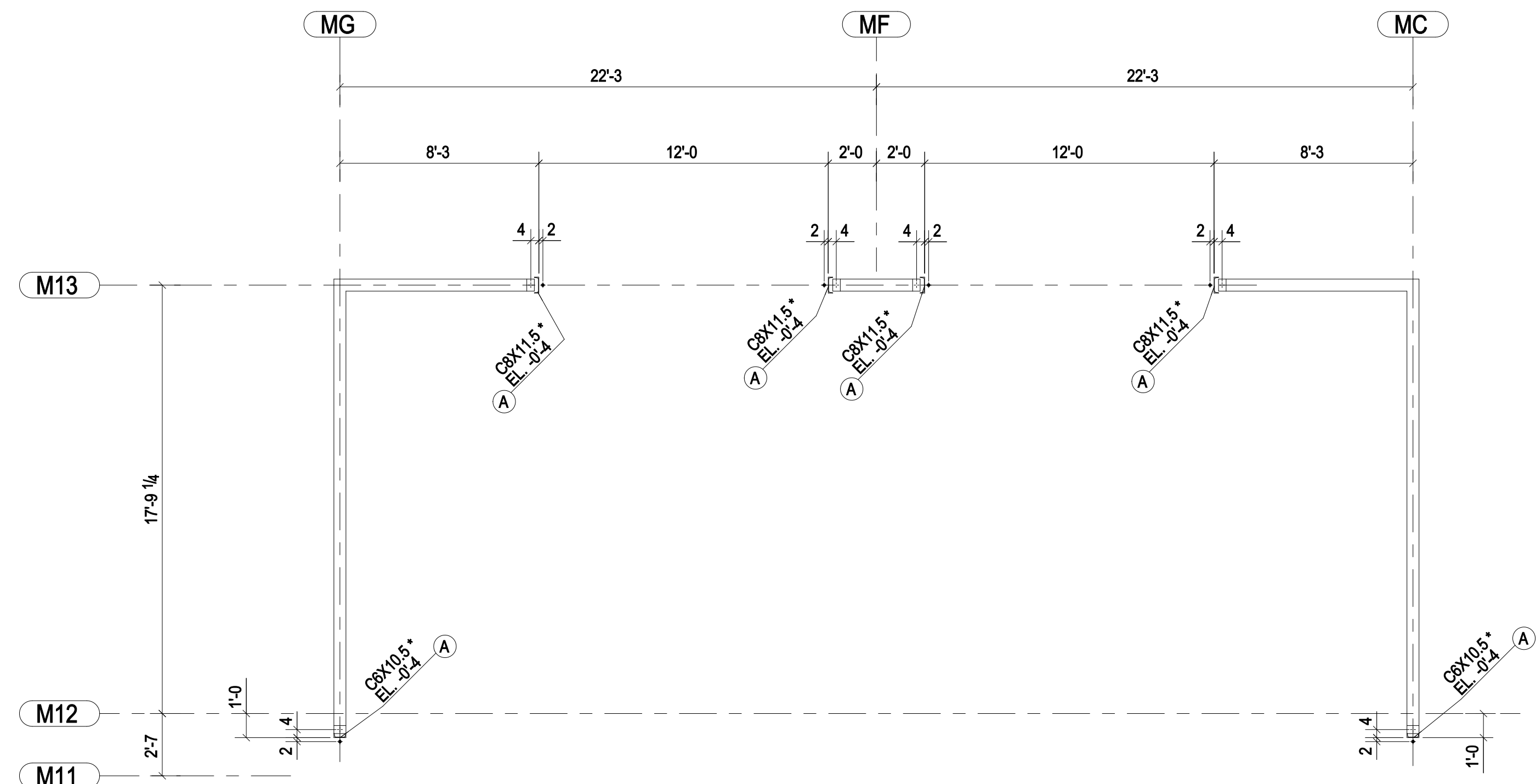
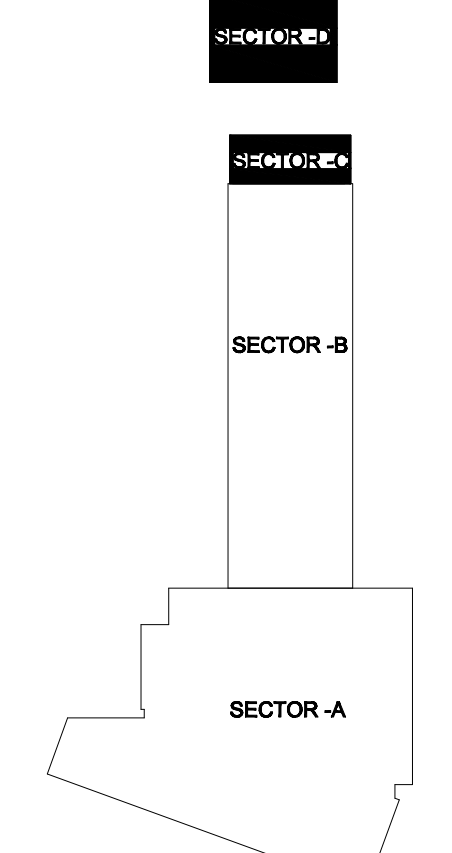
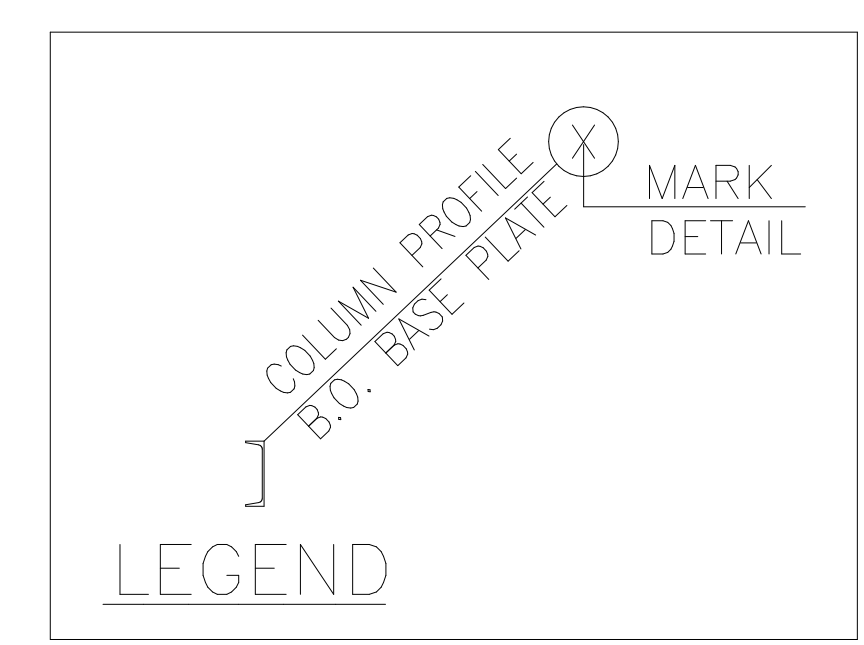


DETAIL-A



ANCHOR BOLT LAYOUT PLAN (SECTOR C & D)
(REF :- S2.0B)

* NOTE:-
PLEASE VERIFY BOTTOM OF
BASE PLATE ELEVATION (TYP.)



KEY PLAN

NOTES:-
1. APPROVER PLEASE VERIFY/PROVIDE
ALL CLOUDED PORTIONS.

05/26/14							FOR APPROVAL		
PRINT RECORD									
DATE	APP.	SHOP	FIELD	DIST.	COORD.	F.C.	OFFICE	SHOP DRAWING DISCLAIMER ALL INFORMATION PROVIDED ON THESE DRAWINGS ARE PREPARED IN ACCORDANCE TO THE CONTRACT DOCUMENTS AND THE SPECIFICATIONS. ALL CLOUDED AREAS SHOW ARE DUE TO LACK OF INFORMATION PROVIDED BY THE CONTRACT DOCUMENTS OR SPECIFICATIONS, BUT PREPARED WITH ALL THE INFORMATION AVAILABLE TO US. WE MUST HAVE THESE AREAS ANSWERED BY THE GENERAL CONTRACTOR, ARCHITECT, & ENGINEER, BEFORE WE CAN START FABRICATING ANY MATERIAL. PLEASE RESPOND WITH THIS INFORMATION BY MARKING UP OUR SHOP DRAWINGS.	
MATERIAL:	A36 UNO	HOLE SIZE:	13/16" Ø UNO	BOLT GRADE:	A325-N UNO	MINIMUM WELD:	3/16"	ELECTRODE:	E-70XX
ARCH.								JOB NAME & LOCATION:	
ENGR.									
CONTR.									
REF:								JOB: 14-111	
DRAWN BY:	PC	05/26/14	CHECKED BY:	SK	05/26/14	SHEET: AB3			
SHEET TITLE:	ANCHOR BOLT PLAN (SECTOR C & D)								
MODIFIED DATE:	05/28/14	LAST PLOT DATE:	05/28/14	CAD FILENAME:		AB3			

