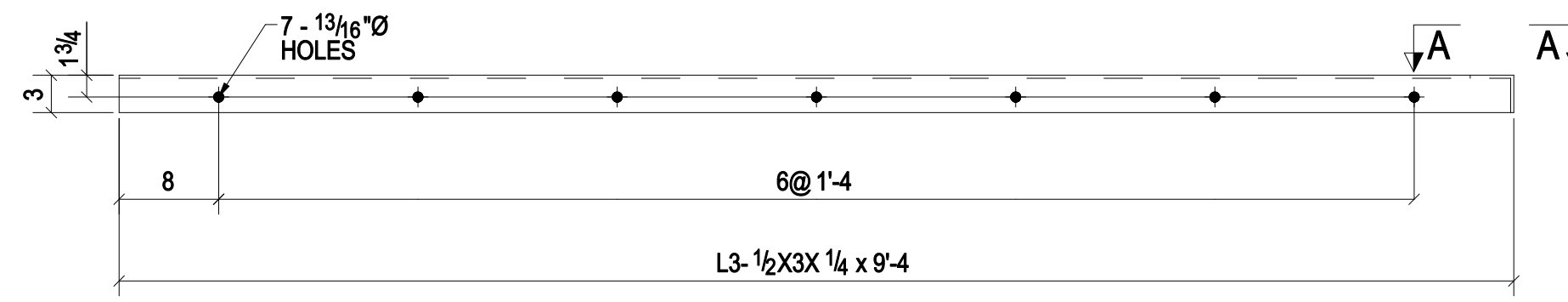
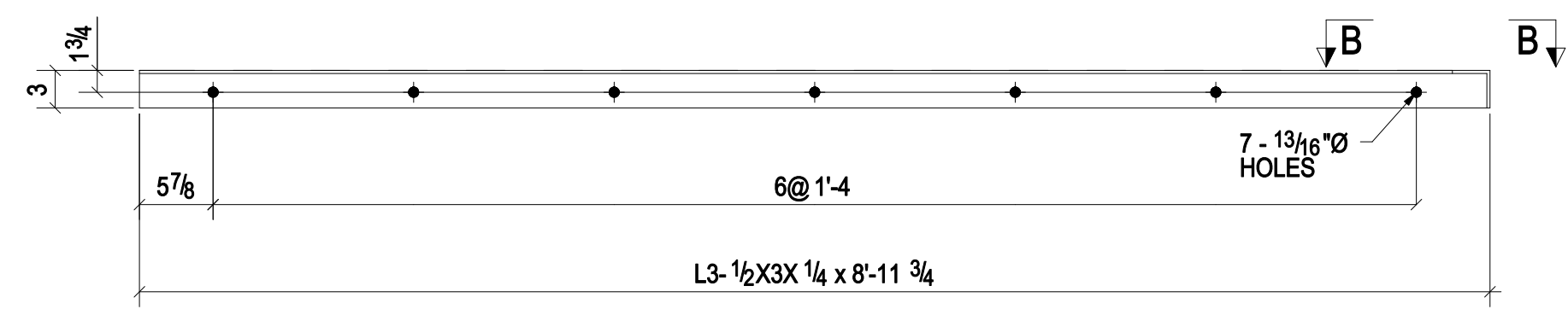
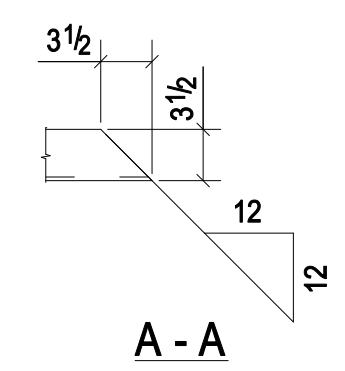


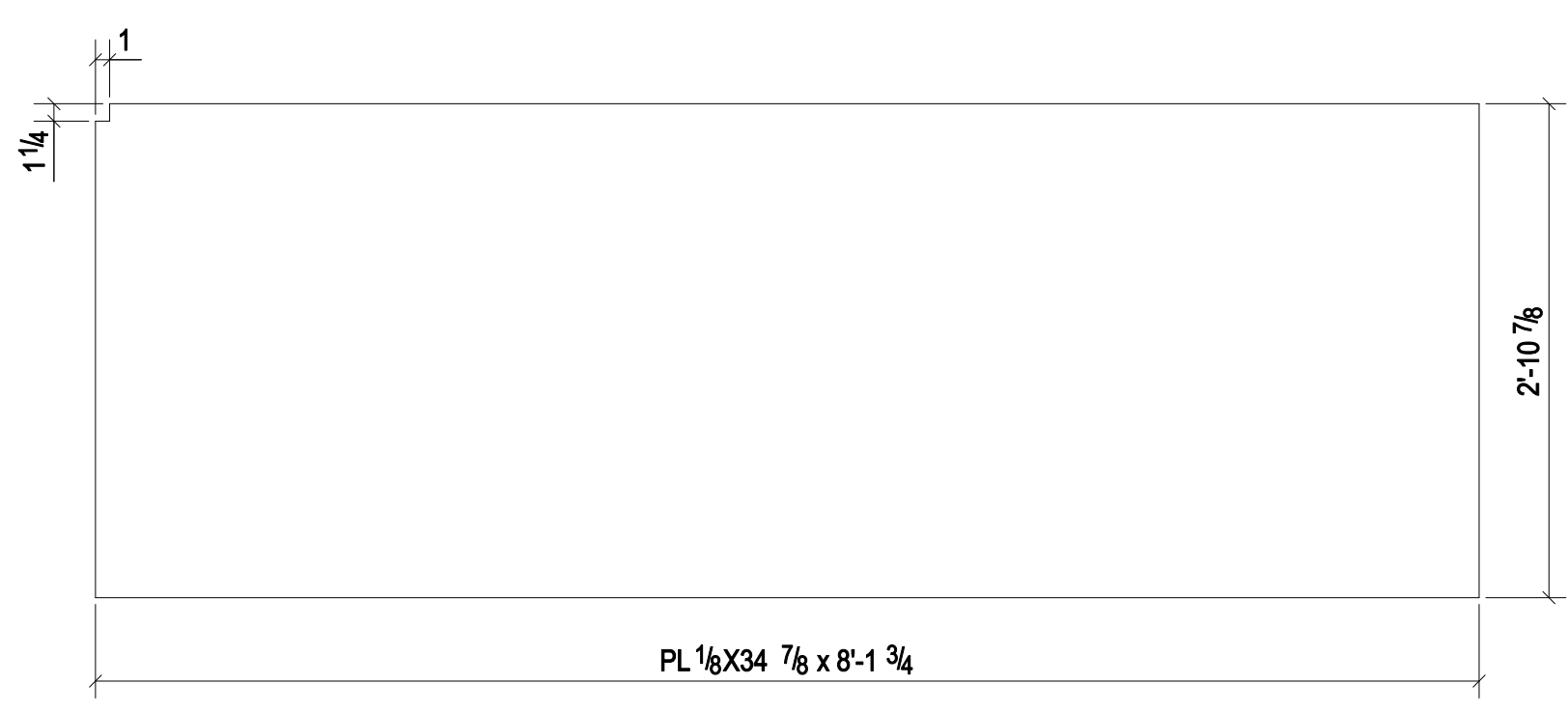
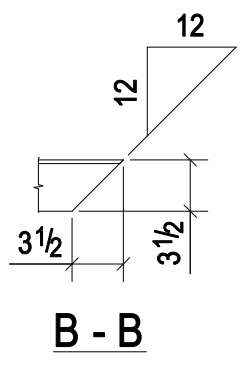
ONE - MISC - 01F10M1



ONE - MISC - 01F10M2



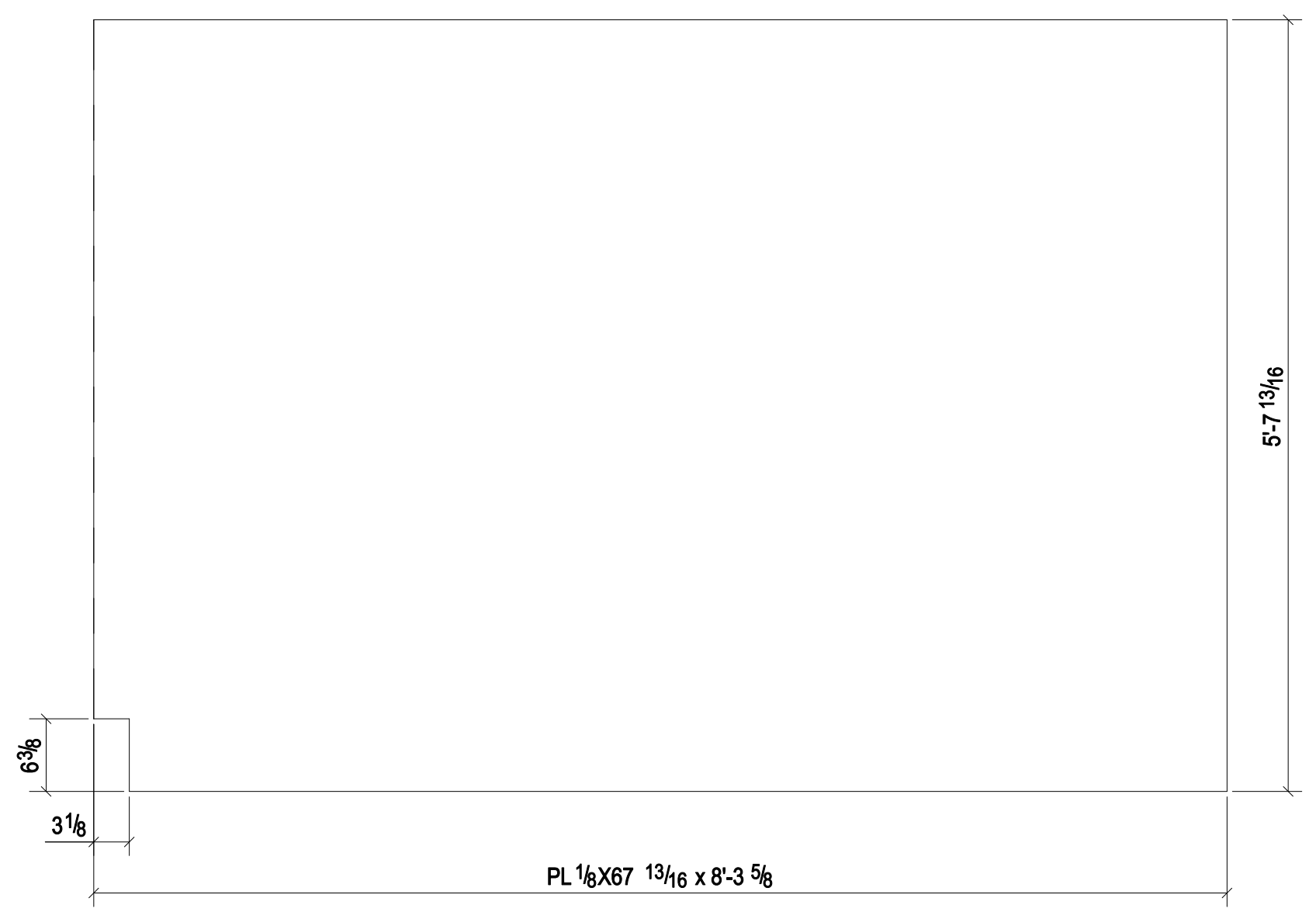
ONE - MISC - 01F10M3



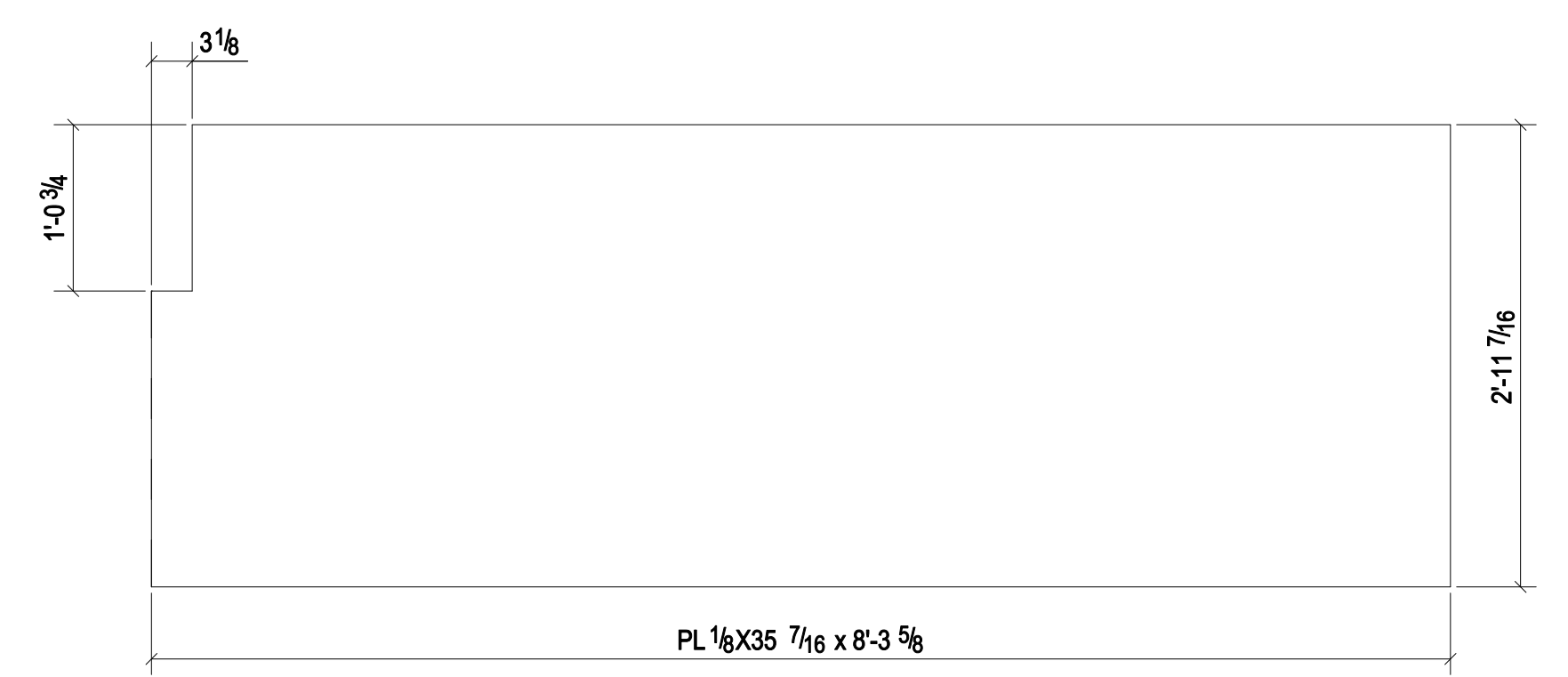
ONE - LANDING_PAN - 01F10LP1



ONE - LANDING_PAN - 01F10LP2



ONE - LANDING_PAN - 01F10LP3



ONE - LANDING_PAN - 01F10LP4

BILL OF MATERIAL

Item Mark	Qty	Description	Length	Weight	Remarks	Steel Grade
01F10LP1	ONE	LANDING_PAN		121		
01F10LP1	1	PL1/8"X34 7/8"	8'-1 3/4"			A36
01F10LP2	ONE	LANDING_PAN		218		
01F10LP2	1	PL1/8"X63"	8'-1 3/4"			A36
01F10LP3	ONE	LANDING_PAN		239		
01F10LP3	1	PL1/8"X67 13/16"	8'-3 5/8"			A36
01F10LP4	ONE	LANDING_PAN		124		
01F10LP4	1	PL1/8"X35 7/16"	8'-3 5/8"			A36
01F10M1	ONE	MISC		44		
01F10M1	1	L3-1/2X3X1/4	8'-3 3/4"			A36
01F10M2	ONE	MISC		50		
01F10M2	1	L3-1/2X3X1/4	9'-4"			A36
01F10M3	ONE	MISC		48		
01F10M3	1	L3-1/2X3X1/4	8'-11 3/4"			A36

ROUTE THIS SHEET TO QA/QC UPON RELEASE TO SHIP
INI: DATE:

SHOP DRAWING DISCLAIMER
ALL INFORMATION PROVIDED ON THESE DRAWINGS ARE PREPARED IN ACCORDANCE TO THE CONTRACT DOCUMENTS AND THE SPECIFICATIONS. ALL CLOTTED AREAS SHOWN ARE DUE TO LACK OF INFORMATION PROVIDED BY THE CONTRACT DOCUMENTS OR SPECIFICATIONS, BUT PREPARED WITH ALL THE INFORMATION AVAILABLE TO US. WE DO NOT HAVE THESE AREAS APPROVED BY THE GENERAL CONTRACTOR, ARCHITECT, & ENGINEER. BEFORE WE CAN START FABRICATING ANY MATERIAL, PLEASE RESPOND WITH THE INFORMATION BY MARKING UP OUR SHOP DRAWINGS.

CHANGES PER RF#
REFERENCE CONTRACT SHEETS
WELDS: E70XX
HOLES: 13/16" HOLES UNO.
STEEL: ASTM A392 UNO.

STANDARD SHOP NOTES
1. SA. END OF MATL. MAY DEVIATE FROM DIMS SHOWN BY 1/2 MINIMUM. AS WELL AS TOLERANCE FOR LENGTHS AND SQUARENESS UNO.
2. WELDERS ARE TO USE PCAW AND/OR SMAW PROCESS FOR WELDS UNLESS NOTED.
3. ALL MEMBERS TO BE FABRICATED WITH SHIPPING MARKS ON LEFT HAND END.
4. ALL SHOP BOLTS TO BE A-325 UNO.
5. FINISHING DIMS ARE GIVEN FROM END OF MAIN MATERIALS & BOTT' COL. & END OF BEAM.
6. 15/16" SLOTS @ END OF C/P ANGLERS UNO.

THIS DRAWING IS RELEASED FOR

FABRICATION
ITEM NO. 01

NO.	REVISION DESCRIPTION	DATE
0	FOR FABRICATION	08/21/14

DATE	BY	CHKD	APP'D	POST

ITEM NO. 01
ZA
08/21/14
SHOP PRIMER
1673

01F10
RKB