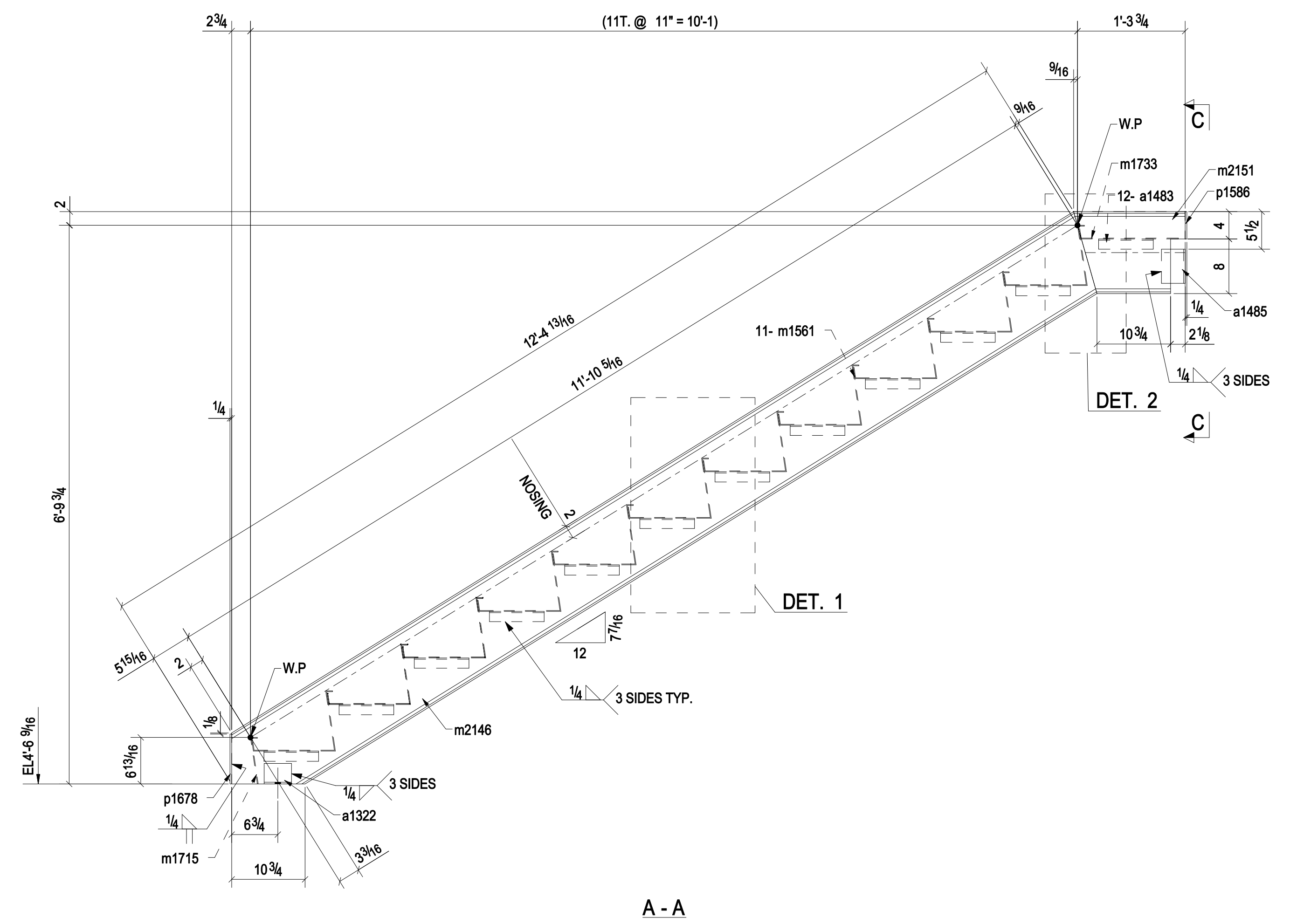
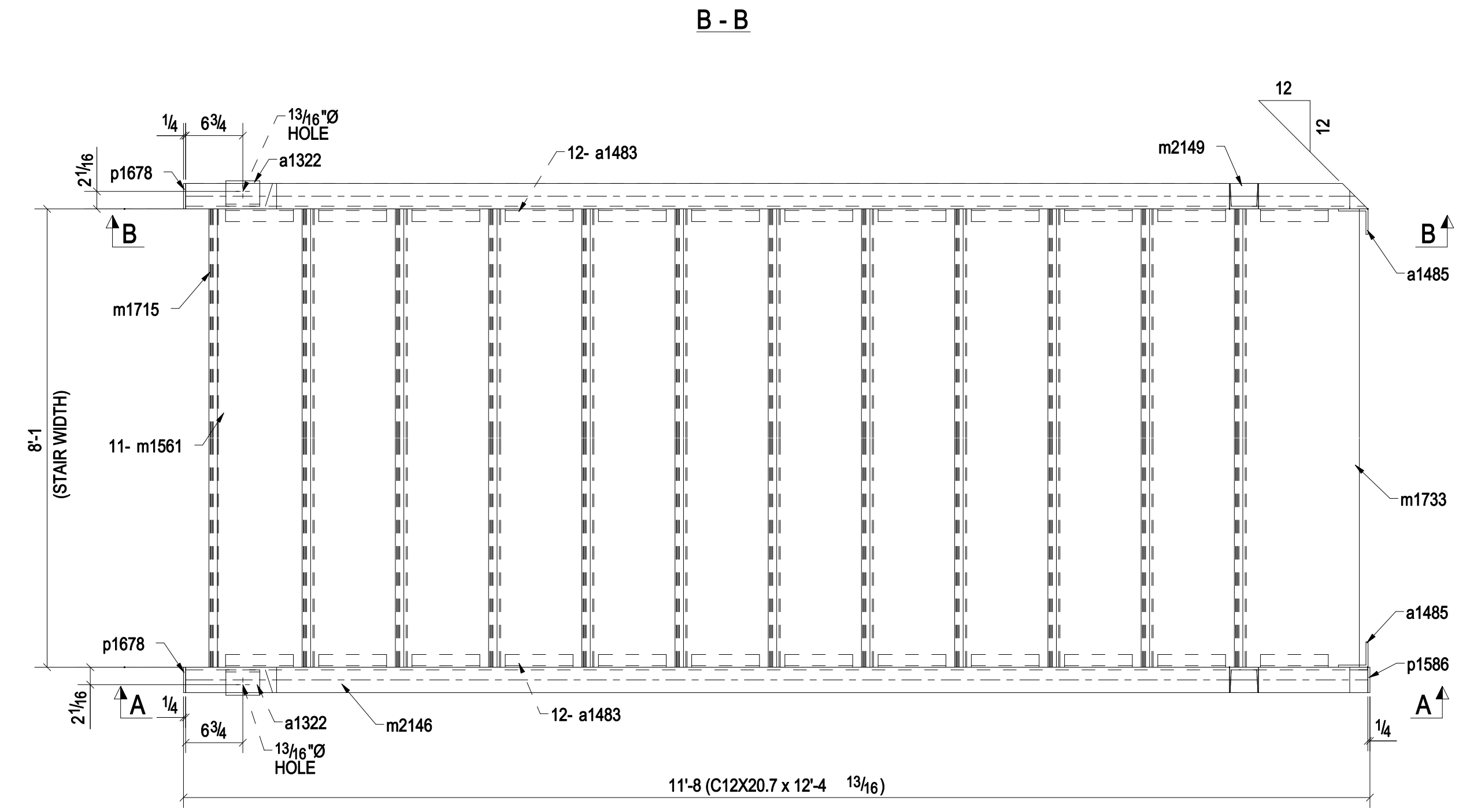
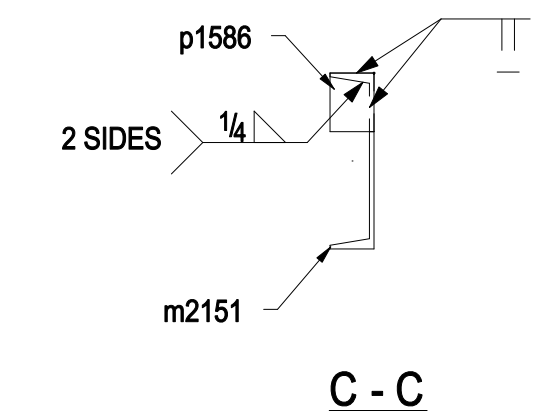
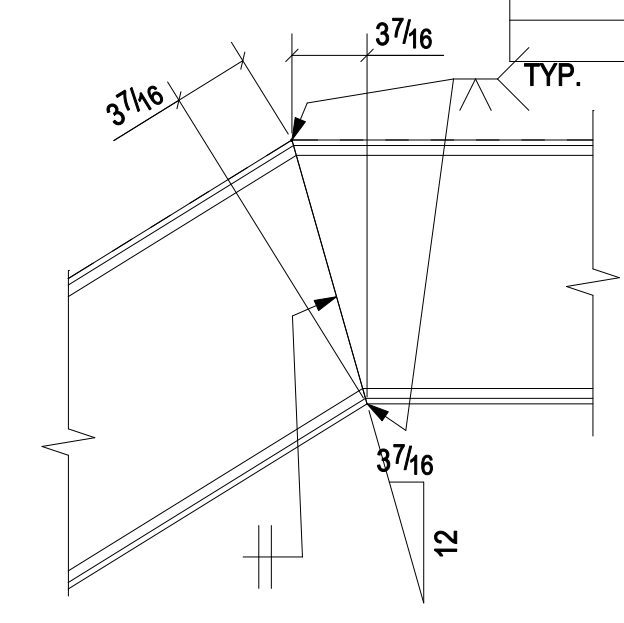
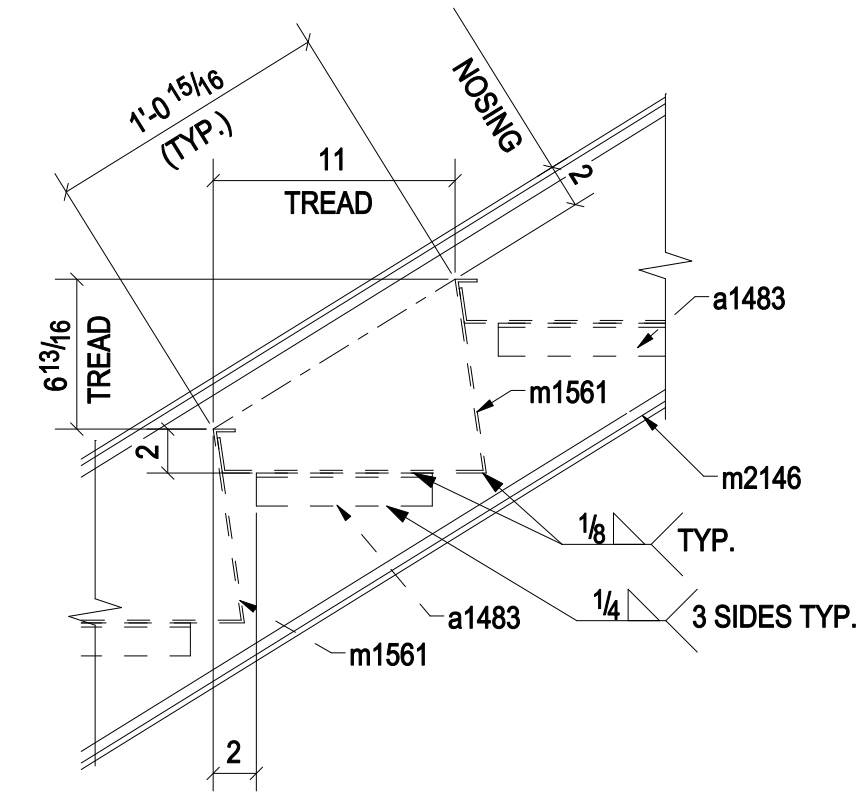
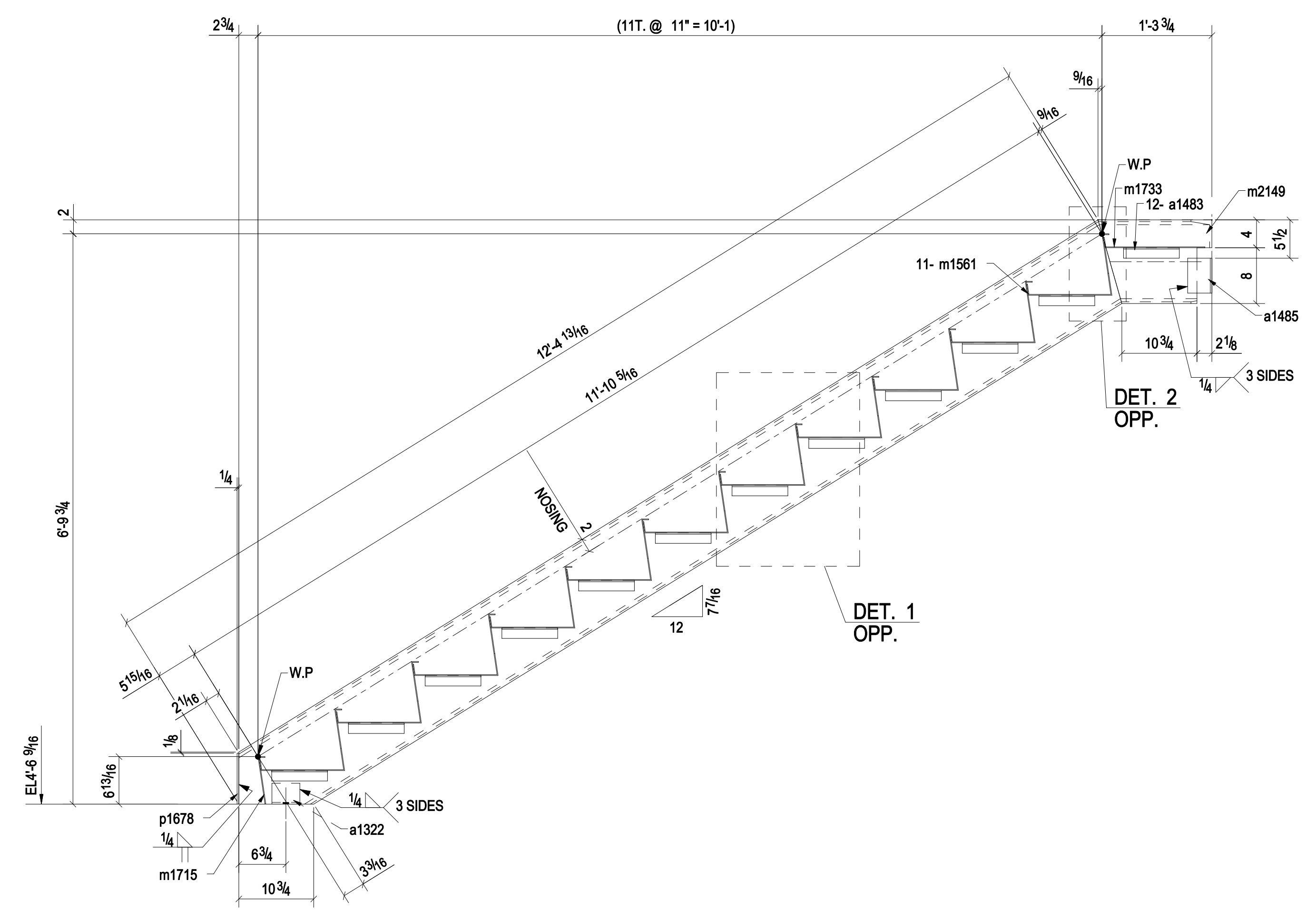


BILL OF MATERIAL

Place Mark	Qty Tot	Description	Length	Weight Tot	Remarks	Steel Grade
01F2ST1	ONE	STAIR		1566		
01F2ST1	1	C12X20.7	12'-4 13/16"			A36
a1322	2	L3X3X1/4	0'-4"			A36
a1483	24	L1-1/2X1-1/2X3/16	0'-8"			A36
a1485	2	L3-1/2X3X1/4	0'-5"			A36
m1561	11	SHT10GAX22 3/4"	8'-1"			A36
m1715	1	SHT10GAX7 5/8"	8'-1"			A36
m1733	1	SHT10GAX15 9/16"	8'-1"			A36
m2146	1	C12X20.7	12'-4 13/16"			A36
m2149	1	C12X20.7	1'-4 5/16"			A36
m2151	1	C12X20.7	1'-4 5/16"			A36
p1586	1	FL1/4"X3"	0'-4"			A36
p1678	2	FL1/4"X3"	0'-7 5/16"			A36

ROUTE THIS SHEET TO QA/QC UPON RELEASE TO SHIP
 IN: _____ DATE: _____



ONE - STAIR - 01F2ST1

SHOP DRAWING DISCLAIMER
 ALL INFORMATION PROVIDED ON THESE DRAWINGS ARE PREPARED IN ACCORDANCE TO THE CONTRACT DOCUMENTS AND THE SPECIFICATIONS. ALL CLOTTED AREAS SHOWN ARE DUE TO LACK OF INFORMATION PROVIDED BY THE CONTRACT DOCUMENTS OR SPECIFICATIONS, BUT PREPARED WITH ALL THE INFORMATION AVAILABLE TO US. WE DO NOT HAVE THESE AREAS APPROVED BY THE GENERAL CONTRACTOR, ARCHITECT, & ENGINEER. BEFORE WE CAN START FABRICATING ANY MATERIAL, PLEASE RESPOND WITH THE INFORMATION BY MARKING UP OUR SHOP DRAWINGS.

CHANGES PER RFI#
 REFERENCE CONTRACT SHEETS
 WELDS: E70XX
 HOLES: 13/16" Ø HOLES UNO.
 STEEL: ASTM A592 UNO.

STANDARD SHOP NOTES
 1. EA. END OF MATL. MAY DEVIATE FROM DIMS SHOWN BY ±2 NORMAL. AS BELL. TOLERANCE FOR LENGTHS AND SQUARENESS UNO.
 2. WELDERS ARE TO USE PCAW AND/OR SMAW PROCESS FOR ALL WELDS UNO.
 3. ALL MEMBERS TO BE FABRICATED WITH SHIPPING MARKS ON LEFT FLANGE UNO.
 4. ALL SHOP BOLTS TO BE A 325 UNO.
 5. BENDING DIMS ARE GIVEN FROM END OF MAIN MATERIALS & BOTT. COIL & END OF BEAM.
 6. 150°/45° BENTS @ END OF C/P ANGLES UNO.

THIS DRAWING IS RELEASED FOR

FABRICATION ITEM NO. 01

NO.	REVISION DESCRIPTION	DATE
0	FOR FABRICATION	08/21/14

ITEM NO. 01	DATE	BY	CHKD	APPD
ZA	08/21/14			
SHOP PRIMER				
1673				

01F2
 RKB