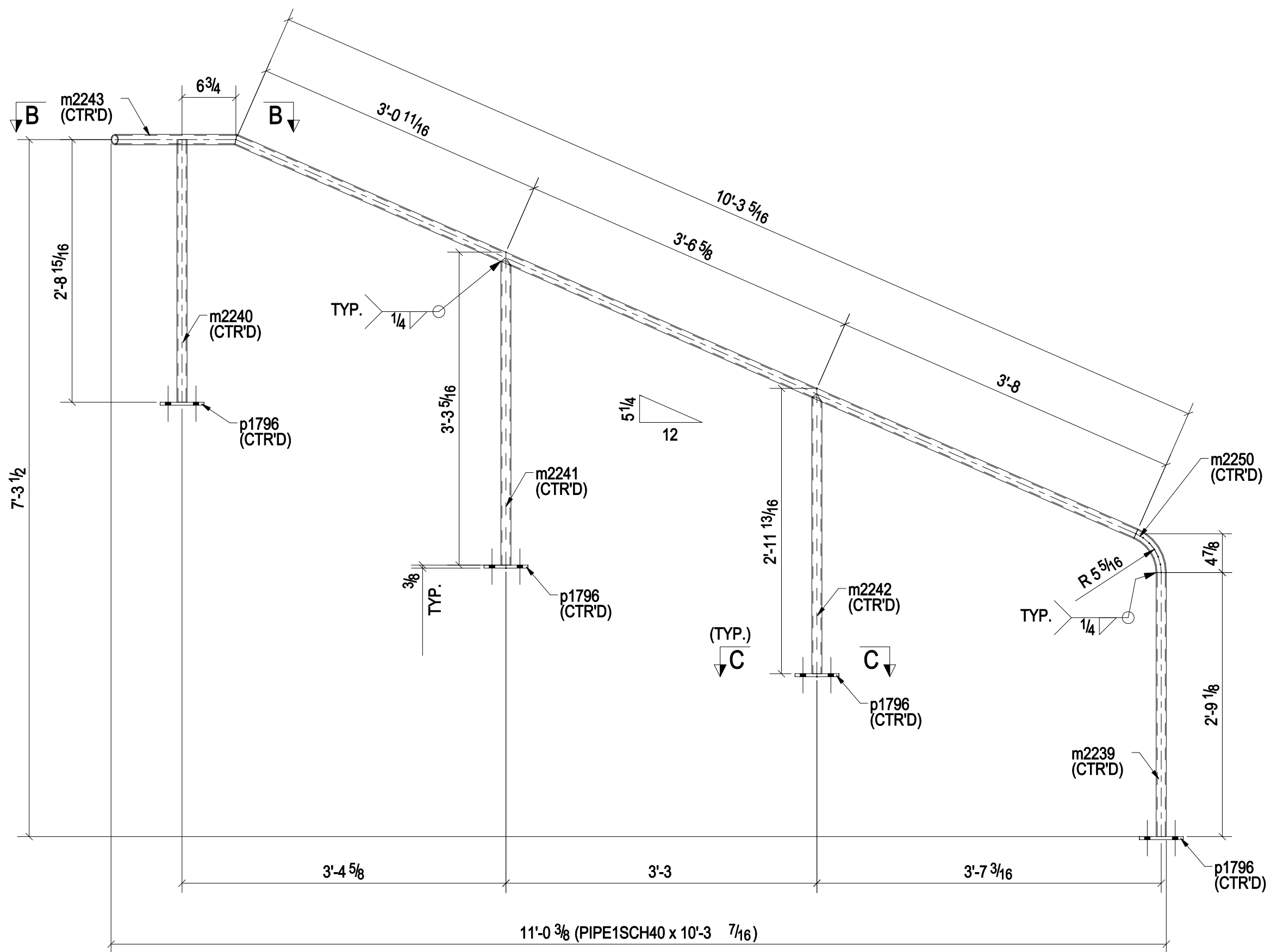
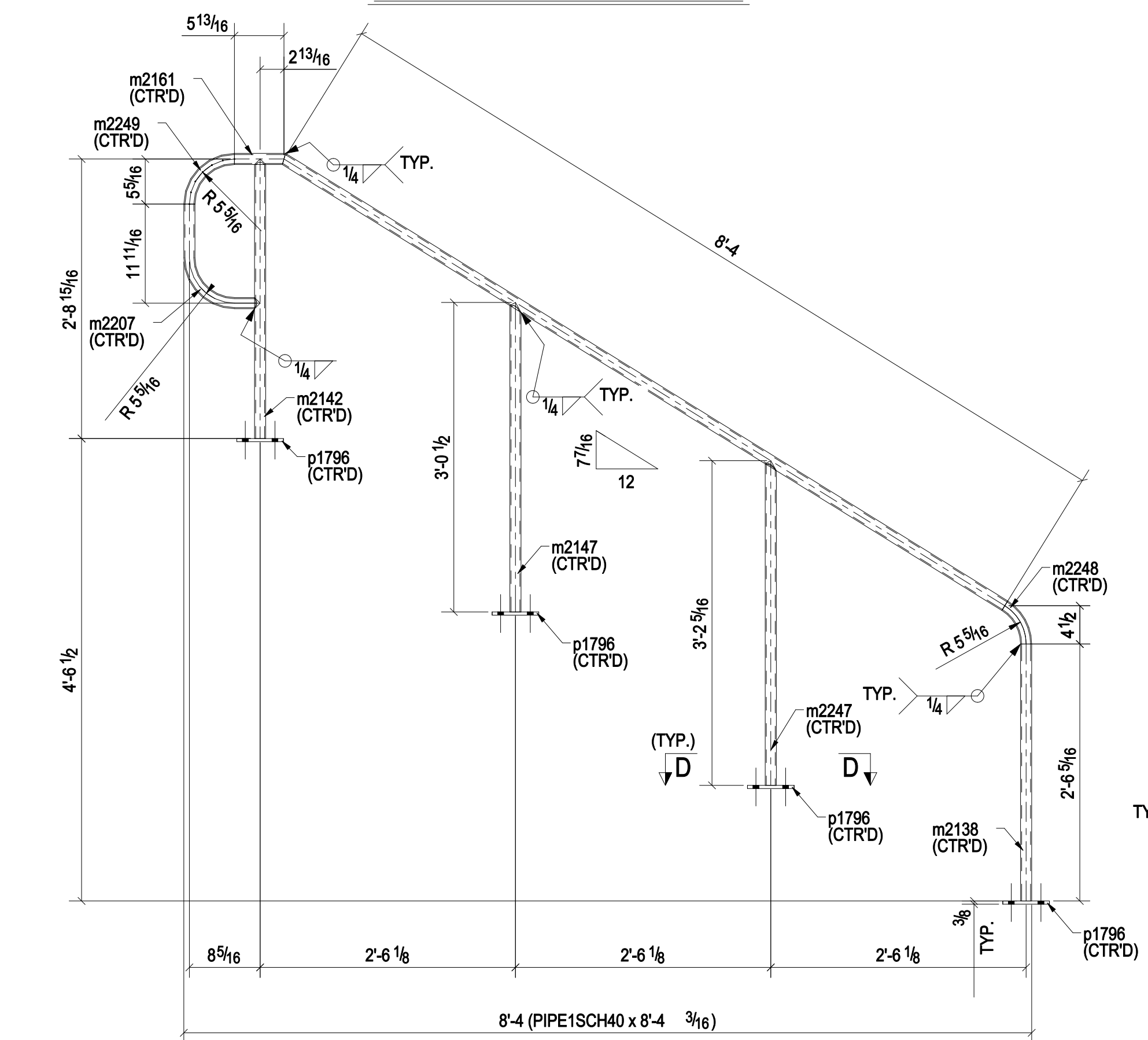


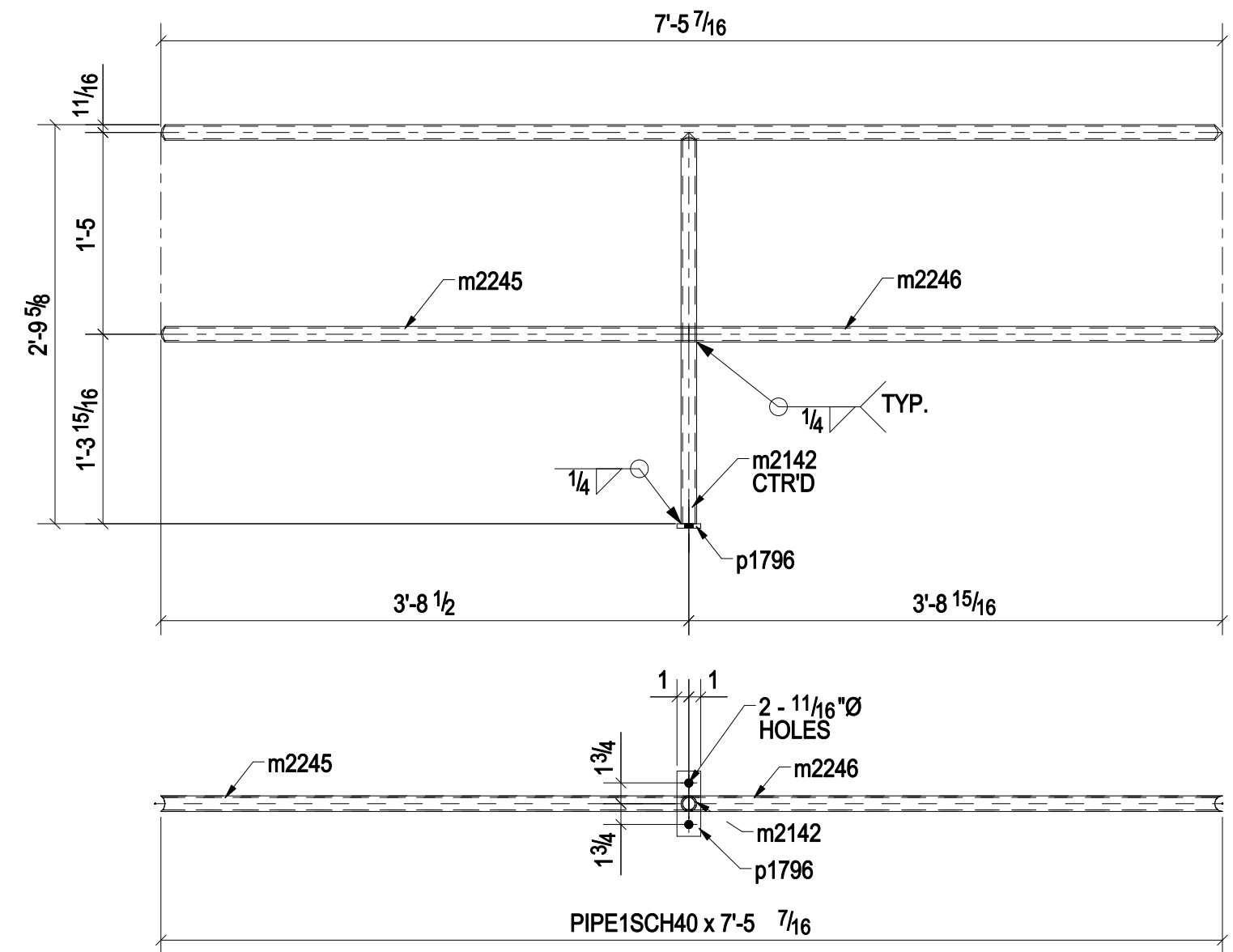
ONE - HANDRAIL - 01F4HR1



ONE - HANDRAIL - 01F4HR3



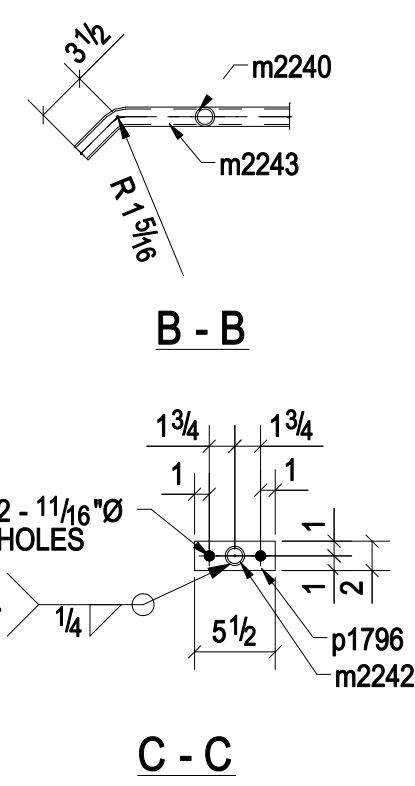
ONE - HANDRAIL - 01F4HR2



ONE - HANDRAIL - 01F4HR4

BILL OF MATERIAL						
Item No.	Qty	Description	Length	Weight	Remarks	Steel Grade
01F4HR1	ONE	HANDRAIL		41		
01F4HR1	1	PIPE1SCH40	8'-4 3/16"			A53
m2138	1	PIPE1SCH40	2'-6 5/16"			A53
m2142	1	PIPE1SCH40	2'-8 15/16"			A53
m2147	1	PIPE1SCH40	3'-0 1/2"			A53
m2159	1	PIPE1SCH40	1'-4 11/16"			A53
m2161	1	PIPE1SCH40	0'-6"			A53
m2247	1	PIPE1SCH40	3'-2 5/16"			A53
m2248	1	PIPE1SCH40	0'-5 3/8"			A53
m2249	1	PIPE1SCH40	0'-8 3/8"			A53
p1796	4	FL3/8"x2"	0'-5 1/2"			A36
01F4HR2	ONE	HANDRAIL		41		
01F4HR2	1	PIPE1SCH40	8'-4 3/16"			A53
m2138	1	PIPE1SCH40	2'-6 5/16"			A53
m2142	1	PIPE1SCH40	2'-8 15/16"			A53
m2147	1	PIPE1SCH40	3'-0 1/2"			A53
m2161	1	PIPE1SCH40	0'-6"			A53
m2207	1	PIPE1SCH40	1'-4 11/16"			A53
m2247	1	PIPE1SCH40	3'-2 5/16"			A53
m2248	1	PIPE1SCH40	0'-5 3/8"			A53
m2249	1	PIPE1SCH40	0'-8 3/8"			A53
p1796	4	FL3/8"x2"	0'-5 1/2"			A36
01F4HR3	ONE	HANDRAIL		42		
01F4HR3	1	PIPE1SCH40	10'-3 7/16"			A53
m2239	1	PIPE1SCH40	2'-9 1/8"			A53
m2240	1	PIPE1SCH40	2'-8 15/16"			A53
m2241	1	PIPE1SCH40	3'-2 9/16"			A53
m2242	1	PIPE1SCH40	2'-11 1/16"			A53
m2243	1	PIPE1SCH40	1'-3 13/16"			A53
m2250	1	PIPE1SCH40	0'-6 1/8"			A53
p1796	4	FL3/8"x2"	0'-5 1/2"			A36
01F4HR4	ONE	HANDRAIL		29		
01F4HR4	1	PIPE1SCH40	7'-5 7/16"			A53
m2142	1	PIPE1SCH40	2'-8 15/16"			A53
m2245	1	PIPE1SCH40	3'-8 1/2"			A53
m2246	1	PIPE1SCH40	3'-8 15/16"			A53
p1796	1	FL3/8"x2"	0'-5 1/2"			A36

ROUTE THIS SHEET TO QA/QC UPON RELEASE TO SHIP  
INI: \_\_\_\_\_ DATE: \_\_\_\_\_



**SHOP DRAWING DISCLAIMER**  
ALL INFORMATION PROVIDED ON THESE DRAWINGS ARE PREPARED IN ACCORDANCE TO THE CONTRACT DOCUMENTS AND THE SPECIFICATIONS. ALL CLOTTED AREAS SHOWN ARE DUE TO LACK OF INFORMATION PROVIDED BY THE CONTRACT DOCUMENTS OR SPECIFICATIONS, BUT PREPARED WITH ALL THE INFORMATION AVAILABLE TO US. WE ACCEPT NO LIABILITY FOR ERRORS OR OMISSIONS. CONTRACTOR, ARCHITECT, & ENGINEER, BEFORE WE CAN START FABRICATING ANY MATERIAL, PLEASE RESPOND WITH THE INFORMATION BY MARKING UP OUR SHOP DRAWINGS.

**CHANGES PER RF#**  
REFERENCE CONTRACT SHEETS  
WELDS: E70XX  
HOLES: 13/16" HOLES UNO.  
STEEL: ASTM A592 UNO.

**STANDARD SHOP NOTES**  
1. RA. END OF MAT'L. MAY DEVIATE FROM DIMS SHOWN BY 1/2" MAXIMUM. AS WELL AS TOLERANCE FOR LENGTHS AND SQUARENESS UNO.  
2. WELDS ARE TO USE PCAW AND/OR SMAW PROCESS FOR ALL UNLESS NOTED.  
3. ALL MEMBERS TO BE FABRICATED WITH SHIPPING MARKS ON LEFT HAND END.  
4. ALL SHOP BOLTS TO BE A 325 UNO.  
5. BENDING DIMS ARE GIVEN FROM END OF MAIN MATERIALS, & BOTTOM COR. & END OF BEAM.  
6. SHIPMENT BOLTS OR USE OF CLIP ANGLES UNO.

THIS DRAWING IS RELEASED FOR

FABRICATION  
ITEM NO. 01

NO.	REVISION DESCRIPTION	DATE

ITEM NO. 01	DATE	POST
ZA	08/21/14	
SHOP PRIMER		
1673		

**01F4**  
RKB