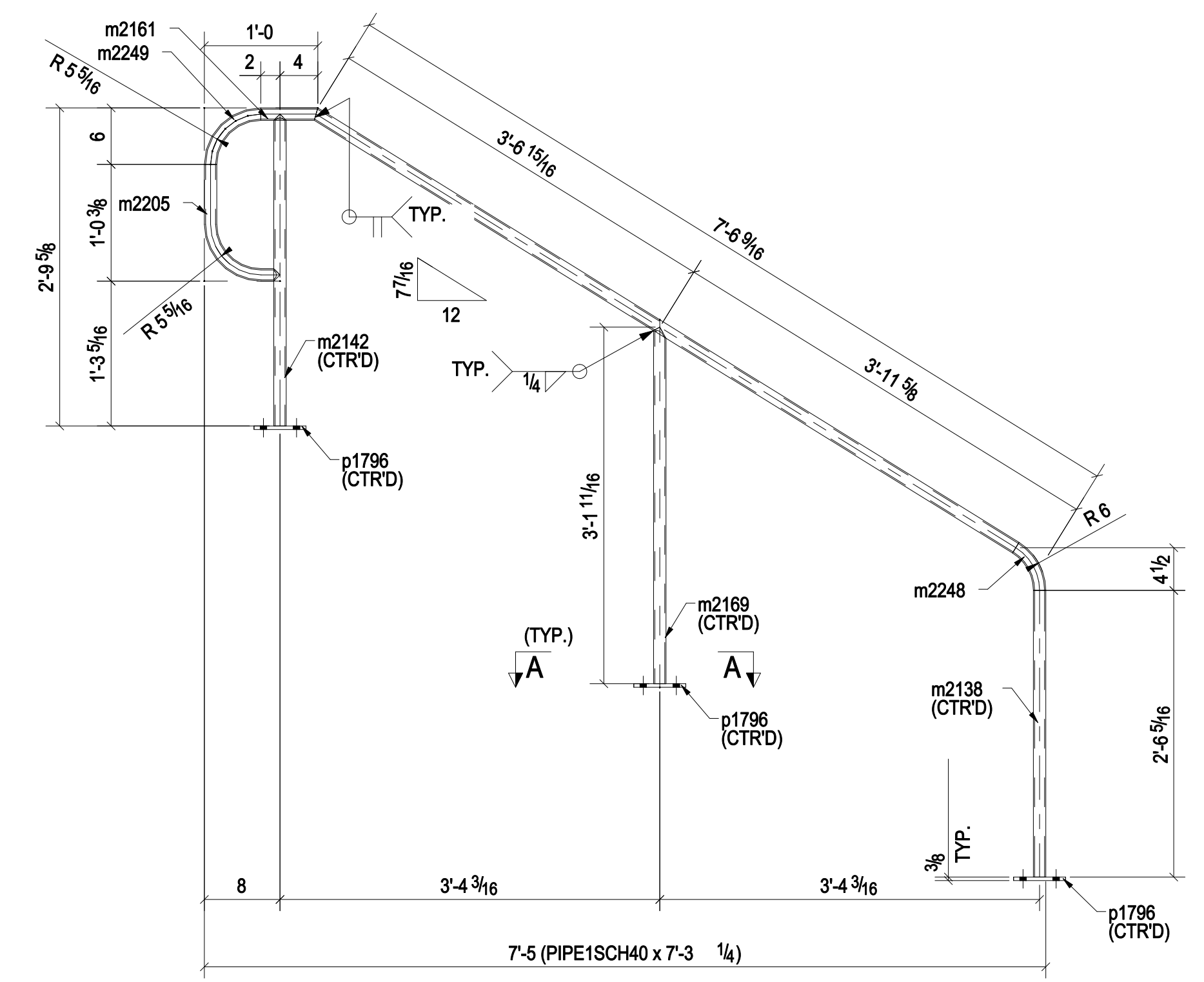


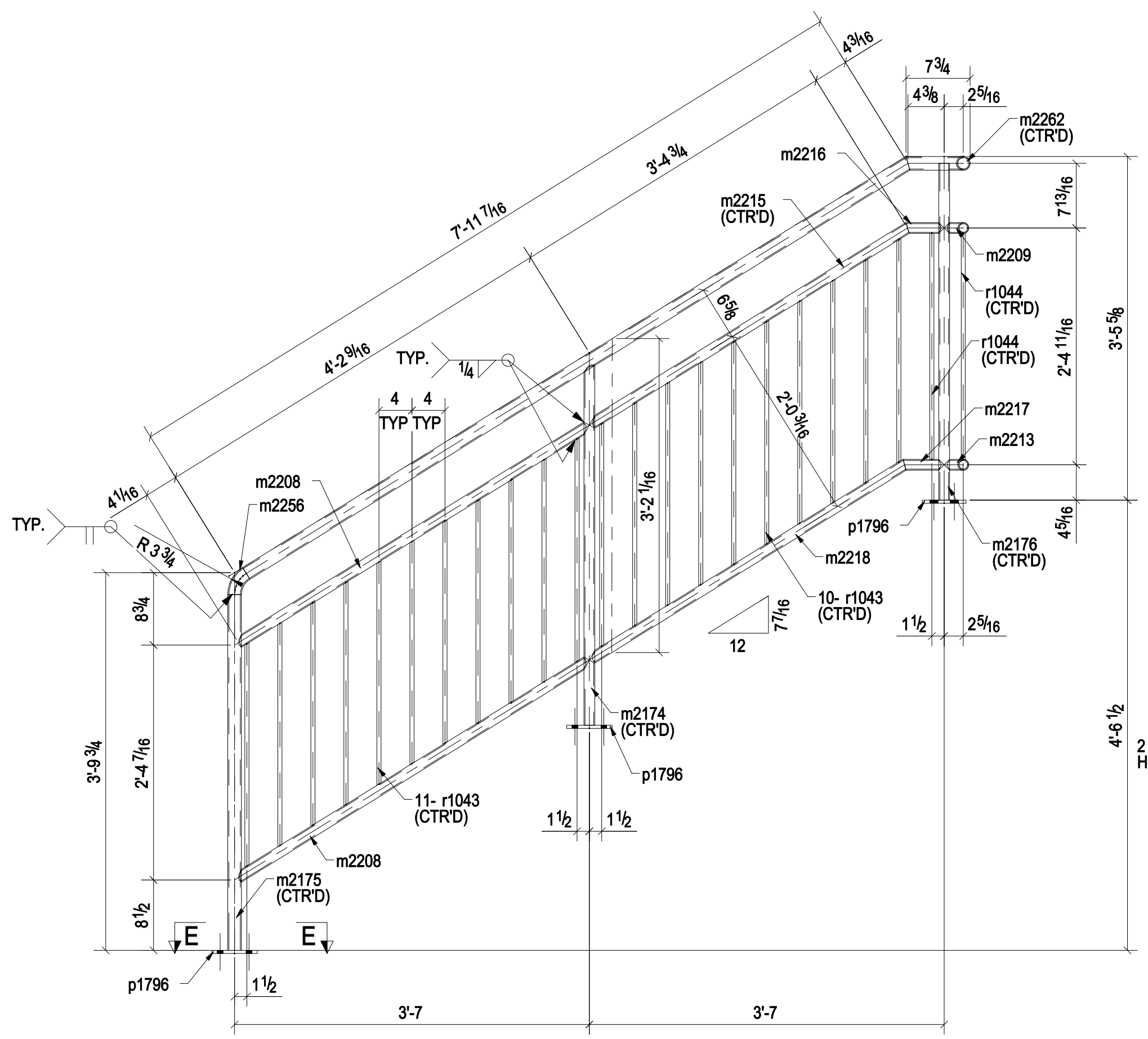
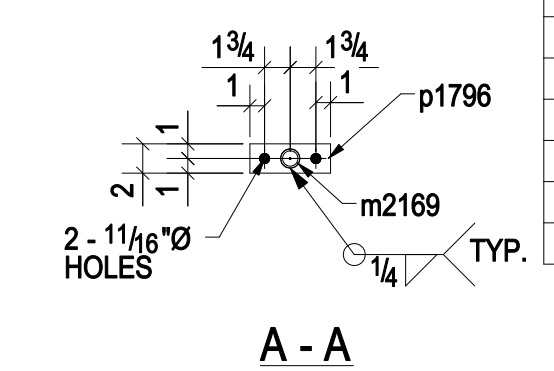
BILL OF MATERIAL

Item Mark	Qty	Description	Length	Weight	Remarks	Steel Grade
01F7GR1	ONE	GUARDRAIL		99		
01F7HR1	ONE	HANDRAIL		33		
01F7HR2	ONE	HANDRAIL		17		
m2174	1	PIPE1-SCH40	7'-10 9/16"			A33
m2175	1	PIPE1-SCH40	3'-7 11/16"			A33
m2176	1	PIPE1-SCH40	3'-7 1/8"			A33
m2178	1	PIPE1-SCH40	3'-4 13/16"			A33
m2208	2	PIPE1-SCH40	4'-2 1/8"			A33
m2209	1	PIPE1-SCH40	0'-3 1/16"			A33
m2213	1	PIPE1-SCH40	0'-3 1/8"			A33
m2215	1	PIPE1-SCH40	3'-9 9/16"			A33
m2216	1	PIPE1-SCH40	0'-4 5/8"			A33
m2217	1	PIPE1-SCH40	0'-5"			A33
m2218	1	PIPE1-SCH40	3'-9 1/8"			A33
m2256	1	PIPE1-SCH40	0'-3 1/16"			A33
m2262	1	PIPE1-SCH40	0'-7 1/2"			A33
p1796	3	FL3/8"x2"	0'-5 1/2"			A36
r1043	21	ROD1/2"	2'-3 3/16"			A36
r1044	2	ROD1/2"	2'-3 3/8"			A36
01F7HR1	ONE	HANDRAIL		33		
01F7HR1	1	PIPE1SCH40	7'-3 1/4"			A33
m2138	1	PIPE1SCH40	2'-6 5/16"			A33
m2142	1	PIPE1SCH40	2'-8 15/16"			A33
m2161	1	PIPE1SCH40	0'-5"			A33
m2169	1	PIPE1SCH40	3'-1 11/16"			A33
m2205	1	PIPE1SCH40	1'-3 11/16"			A33
m2248	1	PIPE1SCH40	0'-5 3/8"			A33
m2249	1	PIPE1SCH40	0'-8 3/8"			A33
p1796	3	FL3/8"x2"	0'-5 1/2"			A36
01F7HR2	ONE	HANDRAIL		17		
01F7HR2	1	PIPE1SCH40	8'-5 5/16"			A33
p1522	2	PL1/4"x1 5/16"	0'-1 5/16"			A36
wb1	4	BRACKET			BY OTHERS	A36

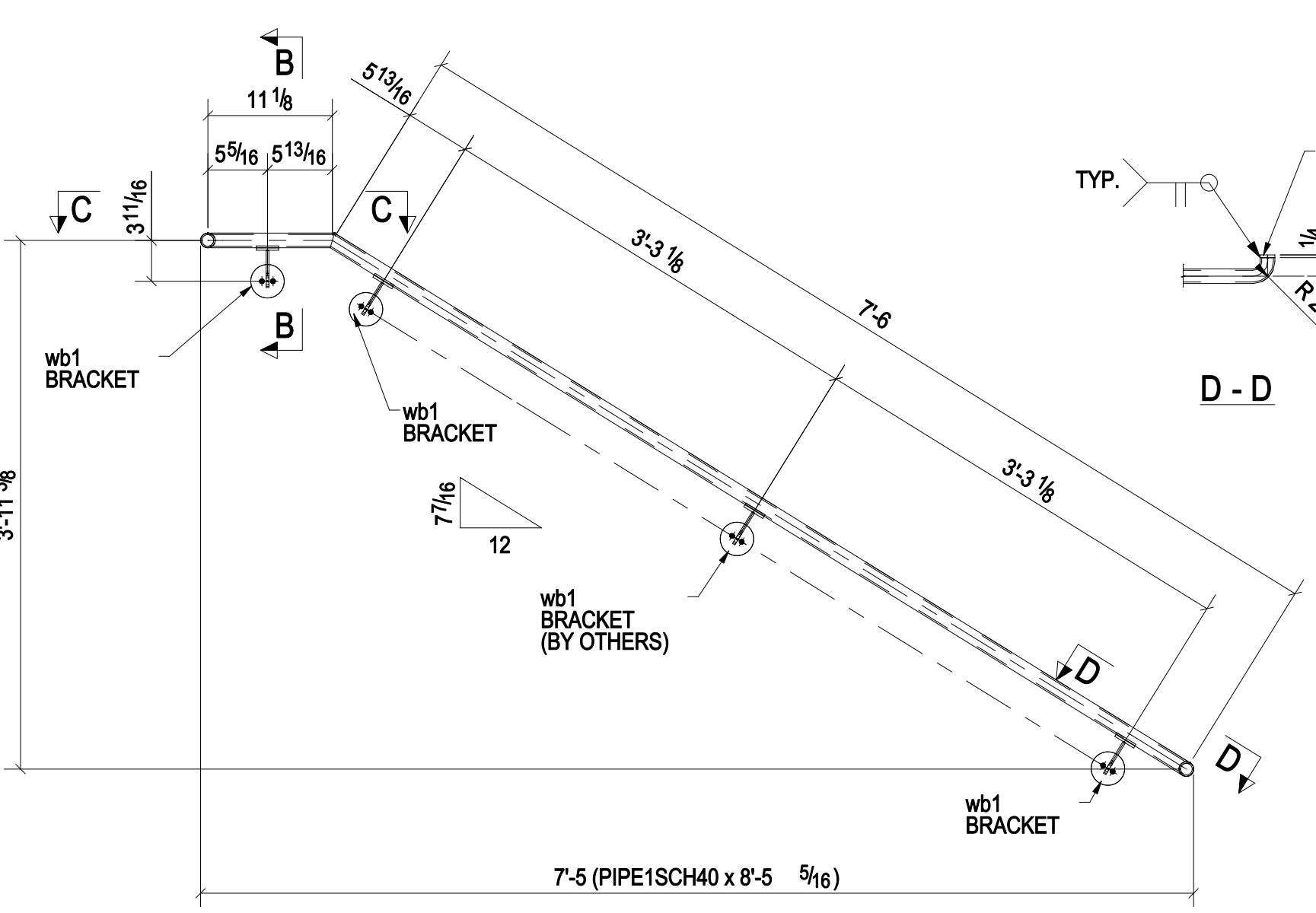
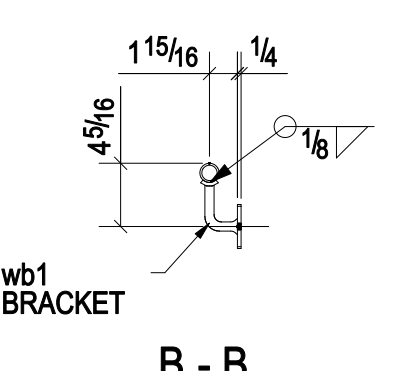
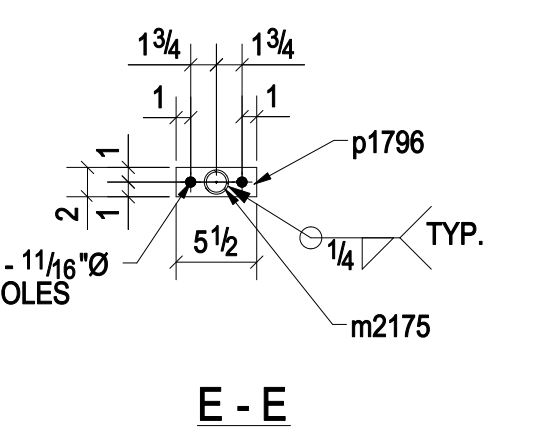
ROUTE THIS SHEET TO QA/QC UPON RELEASE TO SHOP
 IN: _____ DATE: _____



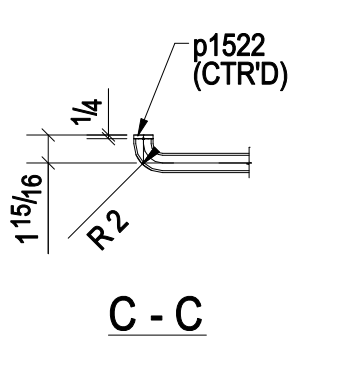
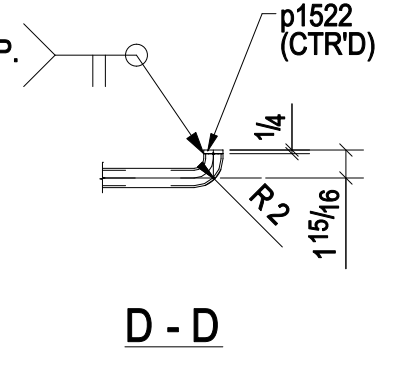
ONE - HANDRAIL - 01F7HR1



ONE - GUARDRAIL - 01F7GR1



ONE - HANDRAIL - 01F7HR2



SHOP DRAWING DISCLAIMER
 ALL INFORMATION PROVIDED ON THESE DRAWINGS ARE PREPARED IN ACCORDANCE TO THE CONTRACT DOCUMENTS AND THE SPECIFICATIONS. ALL CLOTTED AREAS SHOWN ARE DUE TO LACK OF INFORMATION PROVIDED BY THE CONTRACT DOCUMENTS OR SPECIFICATIONS, BUT PREPARED WITH ALL THE INFORMATION AVAILABLE TO US. WE MAY HAVE THESE AREAS APPROVED BY THE GENERAL CONTRACTOR, ARCHITECT, & ENGINEER. BEFORE WE CAN START FABRICATING ANY MATERIAL, PLEASE RESPOND WITH THE INFORMATION BY MARKING UP OUR SHOP DRAWINGS.

CHANGES PER RF#
 REFERENCE CONTRACT SHEETS
 WELDS: E70XX
 HOLES: 13/16" Ø HOLES UNO.
 STEEL: ASTM A592 UNO.

STANDARD SHOP NOTES
 1. RA. END OF MATL. MAY DEVIATE FROM DIMS SHOWN BY ±2 NOMINAL AS MILL. TOLERANCE FOR LENGTHS AND SQUARENESS UNO.
 2. WELDERS ARE TO USE PCAW AND/OR SMAW PROCESS FOR AWE IS.1 UNLESS NOTED.
 3. ALL MEMBERS TO BE FABRICATED WITH SHIPPING MARKS ON LEFT FLANGE END.
 4. ALL SHOP BOLTS TO BE A325 UNO.
 5. FINISHING DIMS ARE GIVEN FROM END OF MAIN MATERIALS & BOTT. COL. & END OF BEAM.
 6. 150°/45° SLOTS @ END OF CLIP ANGLES UNO.

THIS DRAWING IS RELEASED FOR

FABRICATION
 ITEM NO. 01

NO.	REVISION DESCRIPTION	DATE

FOR FABRICATION
 DATE: 08/21/14
 POST

ITEM NO. 01
 ZA
 08/21/14
 SHOP PRIMER
 1673

01F7

RKB